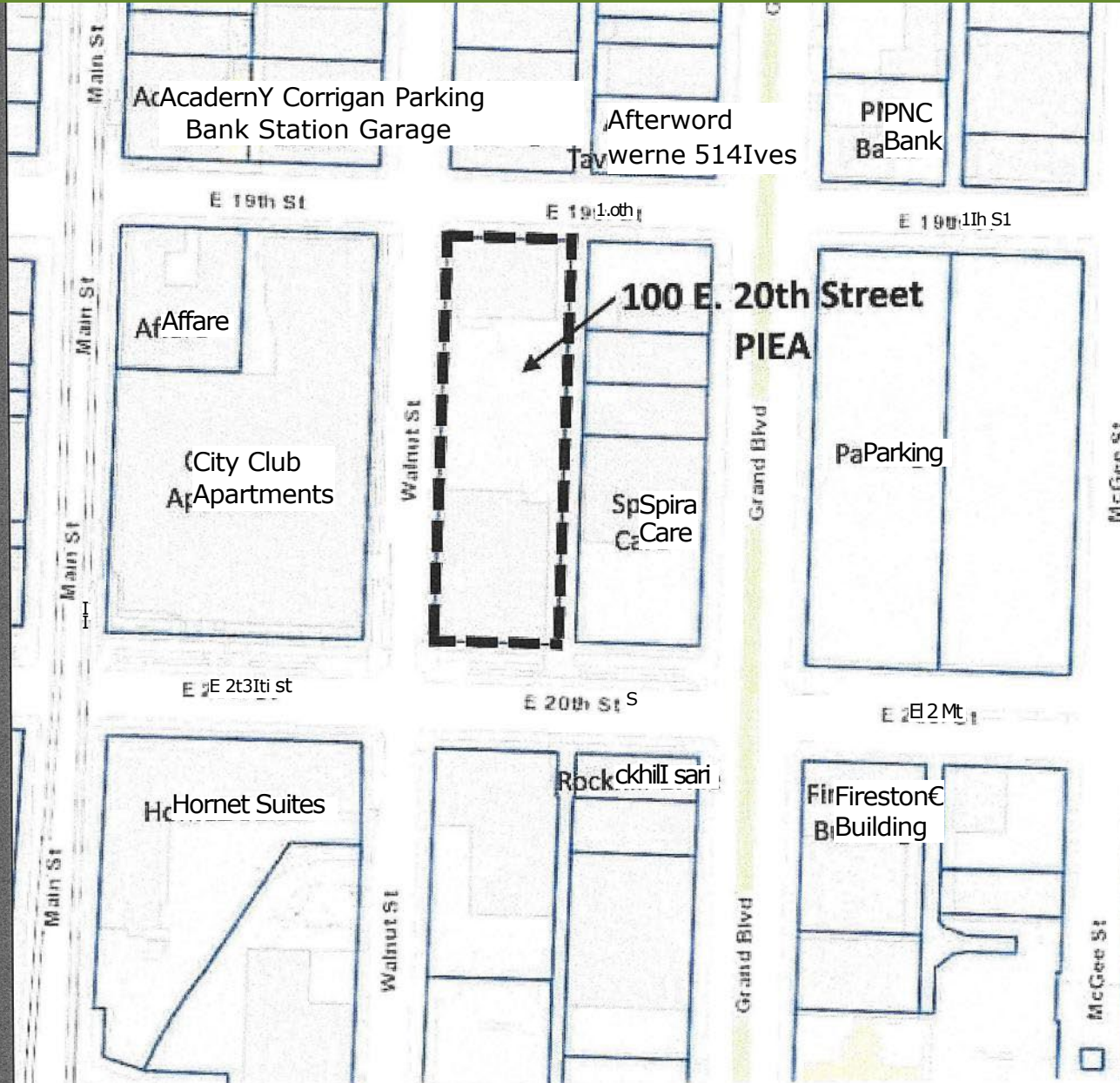


Ordinance No. 230031 / 100 E 20th Correction



B Boundaries

100 E. 20th Street PIEA – General Development Plan

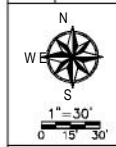
Existing Conditions

- Existing improvements constructed 1950 s
- Two buildings
 - 100 E. 20th Street
 - Two stories / 21,365 sf
 - 1905 Walnut Street
 - One story / 7,567 sf
- Previous Use: Anheuser-Busch Distributorship
- Vacancy - 100%



Existing Conditions

ALTANSPS LAND TITLE SURVEY
100 E. 20TH STREET
JACKSON COUNTY, MISSOURI



Prepared For:
EMPRISE BANK, A KANSAS BANKING CORPORATION

NO.	DATE	BY	REVISION
1	11/15/23	MJS	INITIALS
2	11/15/23	MJS	REVISION
3	11/15/23	MJS	REVISION
4	11/15/23	MJS	REVISION
5	11/15/23	MJS	REVISION
6	11/15/23	MJS	REVISION
7	11/15/23	MJS	REVISION
8	11/15/23	MJS	REVISION
9	11/15/23	MJS	REVISION
10	11/15/23	MJS	REVISION
11	11/15/23	MJS	REVISION
12	11/15/23	MJS	REVISION
13	11/15/23	MJS	REVISION
14	11/15/23	MJS	REVISION
15	11/15/23	MJS	REVISION
16	11/15/23	MJS	REVISION
17	11/15/23	MJS	REVISION
18	11/15/23	MJS	REVISION
19	11/15/23	MJS	REVISION
20	11/15/23	MJS	REVISION
21	11/15/23	MJS	REVISION
22	11/15/23	MJS	REVISION
23	11/15/23	MJS	REVISION
24	11/15/23	MJS	REVISION
25	11/15/23	MJS	REVISION
26	11/15/23	MJS	REVISION
27	11/15/23	MJS	REVISION
28	11/15/23	MJS	REVISION
29	11/15/23	MJS	REVISION
30	11/15/23	MJS	REVISION
31	11/15/23	MJS	REVISION
32	11/15/23	MJS	REVISION
33	11/15/23	MJS	REVISION
34	11/15/23	MJS	REVISION
35	11/15/23	MJS	REVISION
36	11/15/23	MJS	REVISION
37	11/15/23	MJS	REVISION
38	11/15/23	MJS	REVISION
39	11/15/23	MJS	REVISION
40	11/15/23	MJS	REVISION
41	11/15/23	MJS	REVISION
42	11/15/23	MJS	REVISION
43	11/15/23	MJS	REVISION
44	11/15/23	MJS	REVISION
45	11/15/23	MJS	REVISION
46	11/15/23	MJS	REVISION
47	11/15/23	MJS	REVISION
48	11/15/23	MJS	REVISION
49	11/15/23	MJS	REVISION
50	11/15/23	MJS	REVISION
51	11/15/23	MJS	REVISION
52	11/15/23	MJS	REVISION
53	11/15/23	MJS	REVISION
54	11/15/23	MJS	REVISION
55	11/15/23	MJS	REVISION
56	11/15/23	MJS	REVISION
57	11/15/23	MJS	REVISION
58	11/15/23	MJS	REVISION
59	11/15/23	MJS	REVISION
60	11/15/23	MJS	REVISION
61	11/15/23	MJS	REVISION
62	11/15/23	MJS	REVISION
63	11/15/23	MJS	REVISION
64	11/15/23	MJS	REVISION
65	11/15/23	MJS	REVISION
66	11/15/23	MJS	REVISION
67	11/15/23	MJS	REVISION
68	11/15/23	MJS	REVISION
69	11/15/23	MJS	REVISION
70	11/15/23	MJS	REVISION
71	11/15/23	MJS	REVISION
72	11/15/23	MJS	REVISION
73	11/15/23	MJS	REVISION
74	11/15/23	MJS	REVISION
75	11/15/23	MJS	REVISION
76	11/15/23	MJS	REVISION
77	11/15/23	MJS	REVISION
78	11/15/23	MJS	REVISION
79	11/15/23	MJS	REVISION
80	11/15/23	MJS	REVISION
81	11/15/23	MJS	REVISION
82	11/15/23	MJS	REVISION
83	11/15/23	MJS	REVISION
84	11/15/23	MJS	REVISION
85	11/15/23	MJS	REVISION
86	11/15/23	MJS	REVISION
87	11/15/23	MJS	REVISION
88	11/15/23	MJS	REVISION
89	11/15/23	MJS	REVISION
90	11/15/23	MJS	REVISION
91	11/15/23	MJS	REVISION
92	11/15/23	MJS	REVISION
93	11/15/23	MJS	REVISION
94	11/15/23	MJS	REVISION
95	11/15/23	MJS	REVISION
96	11/15/23	MJS	REVISION
97	11/15/23	MJS	REVISION
98	11/15/23	MJS	REVISION
99	11/15/23	MJS	REVISION
100	11/15/23	MJS	REVISION

MJS CONSULTING, LLC
2724 CONSOLE TERRACE
LEAWOOD, KANSAS 64095
(913) 334-8819 mjs@mjsc.com
LAND SURVEYING AND PLANNING

PROPERTY DESCRIPTION (PER Title Commitment No: NCS-1190105-KCTY,
DATED AUGUST 17, 2023 AT 8:00 A.M.)

TRACT 1:
LOTS 508 THRU 515, INCLUSIVE, BLOCK 38, MCGEE'S ADDITION, A SUBDIVISION IN KANSAS CITY, JACKSON COUNTY, MISSOURI, EXCEPT THAT PART IN STREETS.

TRACT 2:
A PORTION OF RIGHT-OF-WAY FOR EAST 20TH STREET, AS NOW ESTABLISHED, IN SECTION 8 TOWNSHIP 49 NORTH, RANGE 33 WEST OF THE 5TH PRINCIPAL MERIDIAN IN KANSAS CITY, JACKSON COUNTY, MISSOURI BEING BOUNDED AND DESCRIBED BY OR UNDER THE DIRECT SUPERVISION OF JASON S. ROUBEUBUSH, P.L.S. 2002014092 AS FOLLOWS: BEGINNING AT THE SOUTHEAST CORNER OF LOT 515, BLOCK 38, MCGEE'S ADDITION, A SUBDIVISION OF LAND IN SAID KANSAS CITY, RECORDED IN BOOK 1 AT PAGE 36 IN THE JACKSON COUNTY RECORDER OF DEEDS OFFICE; THENCE SOUTH 02°08'19" WEST, 7.25 FEET; THENCE NORTH 87°17'55" WEST, 115.98 FEET TO A POINT ON THE EXISTING EAST RIGHT-OF-WAY LINE OF WALNUT STREET AS NOW ESTABLISHED; THENCE NORTH 02°04'32" EAST ON SAID EXISTING EAST RIGHT-OF-WAY LINE, 7.25 FEET TO THE SOUTHWEST CORNER OF SAID LOT 515 ALSO BEING A POINT ON THE EXISTING NORTH RIGHT-OF-WAY LINE OF SAID EAST 20TH STREET AS NOW ESTABLISHED; THENCE LEAVING SAID EXISTING EAST RIGHT-OF-WAY LINE, SOUTH 87°17'55" EAST ON THE SOUTH LINE OF SAID LOT 515 AND SAID EXISTING NORTH RIGHT-OF-WAY LINE, 115.98 FEET TO THE POINT OF BEGINNING, CONTAINING 841 SQUARE FEET OR 0.02 ACRES, MORE OR LESS.

ALTA COMMITMENT FOR TITLE INSURANCE SCHEDULE B PART II
ISSUED BY: FIRST AMERICAN TITLE INSURANCE COMPANY NATIONAL COMMERCIAL SERVICES
FILE NO.: NCS-1190105-KCTY, DATED AUGUST 17, 2023 at 8:00 A.M.

EXCEPTIONS:

- EASEMENTS, OR CLAIMS OF EASEMENTS, NOT SHOWN IN PUBLIC RECORDS. (NOTHING TO PLOT)
- ANY ENCROACHMENT, ENCUMBRANCE, VIOLATION, VARIATION OR ADVERSE CIRCUMSTANCES AFFECTING TITLE THAT WOULD BE DISCLOSED BY AN ACCURATE AND COMPLETE SURVEY OF THE LAND OR THAT COULD BE ASCERTAINED BY AN INSPECTION OF THE LAND. (NOTHING TO PLOT)
- EASEMENTS, RESTRICTIONS AND SETBACK LINES ARE PER PLAT, RECORDED AS IN PLAT BOOK 1, PAGE 36. (NOTHING TO PLOT)

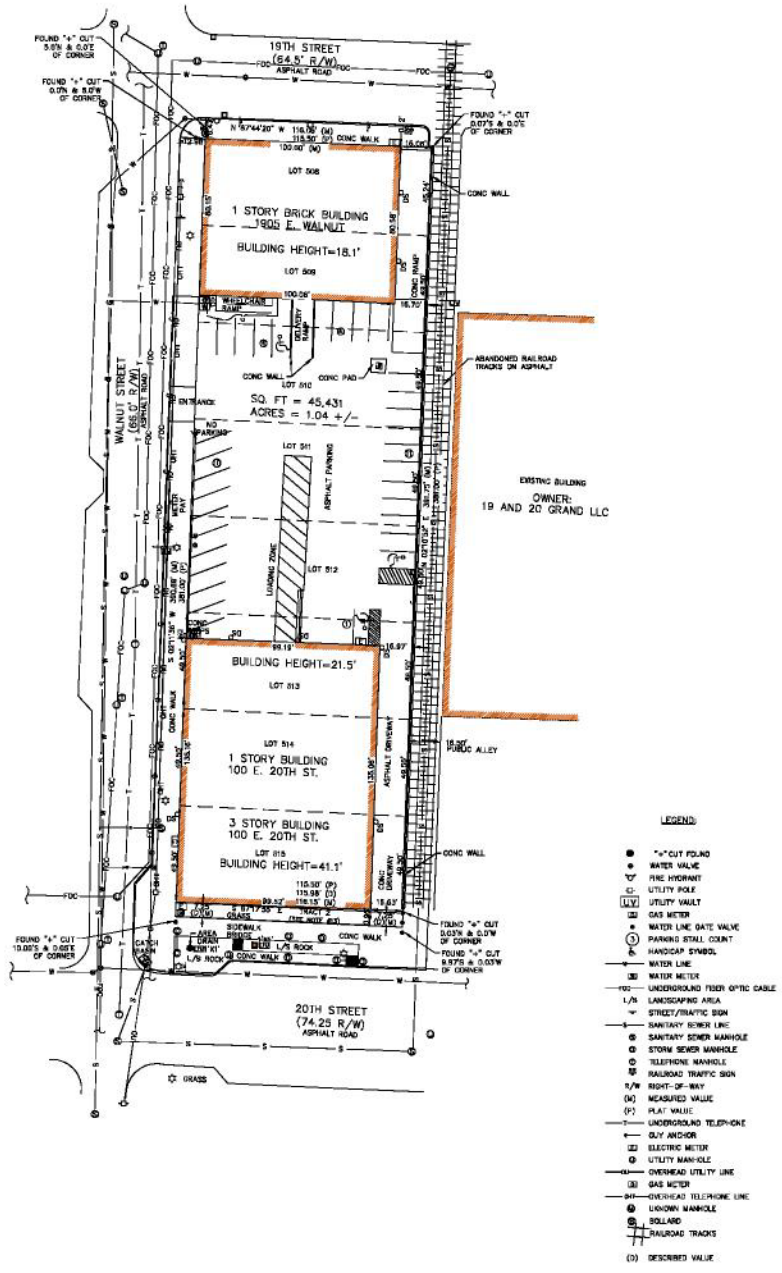
NOTES:

- BASIS OF BEARINGS FOR SURVEY BASED ON: MISSOURI STATE PLANE COORDINATE SYSTEM, WEST ZONE, NAD83.
- WE HAVE REVIEWED THE "FLOOD INSURANCE RATE MAP", COMMUNITY PANEL NO.29095C0254G, EFFECTIVE JANUARY 20, 2017, AS PUBLISHED BY FEDERAL EMERGENCY MANAGEMENT AGENCY, OUR REVIEW OF THIS MAP INDICATES THAT THIS PARCEL OF LAND LIES WITHIN ZONE X, WHICH IS "AREAS DETERMINED TO BE OUTSIDE THE 0.2% ANNUAL CHANCE FLOODPLAIN."
- THIS SURVEY WAS MADE ON THE GROUND AS PER TITLE COMMITMENT NO. NCS-1190105-KCTY DATED AUGUST 17, 2023, 8:00 A.M., PROVIDED BY FIRST AMERICAN TITLE INSURANCE COMPANY NATIONAL COMMERCIAL SERVICES.
- ACCESS TO THE PROPERTY IS THROUGH LOTS 508 THRU 515, AND 7.25 FEET OF VACATED RIGHT-OF-WAY FROM DEDICATED PUBLIC STREETS WALNUT STREET, 20TH STREET, 19TH STREET AND ALLEY.
- MEASURED LAND AREA: = 45,431 SQ. FT. OR 1.04 ACRES MORE OR LESS.
- ZONING INFORMATION FOR PROPERTY WAS NOT PROVIDED.
- THERE WAS NO OBSERVED EVIDENCE OF SITE USE AS A SOLID WASTE DUMP, SUMP OR SANITARY LANDFILL.
- THERE IS NO FILL CONSTRUCTION PRESENTLY ON SITE.
- THE PROPERTY SHOWN ON THIS SURVEY IS THE SAME PROPERTY DESCRIBED IN TITLE COMMITMENT NCS-1190105-KCTY.
- PARKING COUNT: 25 REGULAR SPACES, 3 HANDICAP SPACES.
- THERE ARE NO ENCROACHMENTS OBSERVED ON OR OVER THE PROPERTY LINES.
- THE SURVEYOR IS NOT AWARE OF PROPOSED CHANGES OF RIGHT-OF-WAY OVER THE SURVEYED PREMISES. IT IS CUSTOMARY FOR THE CITY TO NOT REVEAL PLANS FOR FUTURE ACQUISITIONS OF RIGHT-OF-WAY UNTIL SUCH TIME AS THE PROPERTY IS BEING REDEVELOPED.
- TRACT 2 IS VACATED RIGHT-OF-WAY RESERVED FOR EASEMENT PER INSTRUMENT NUMBER 2023E0005985 FILED JANUARY 30, 2023.

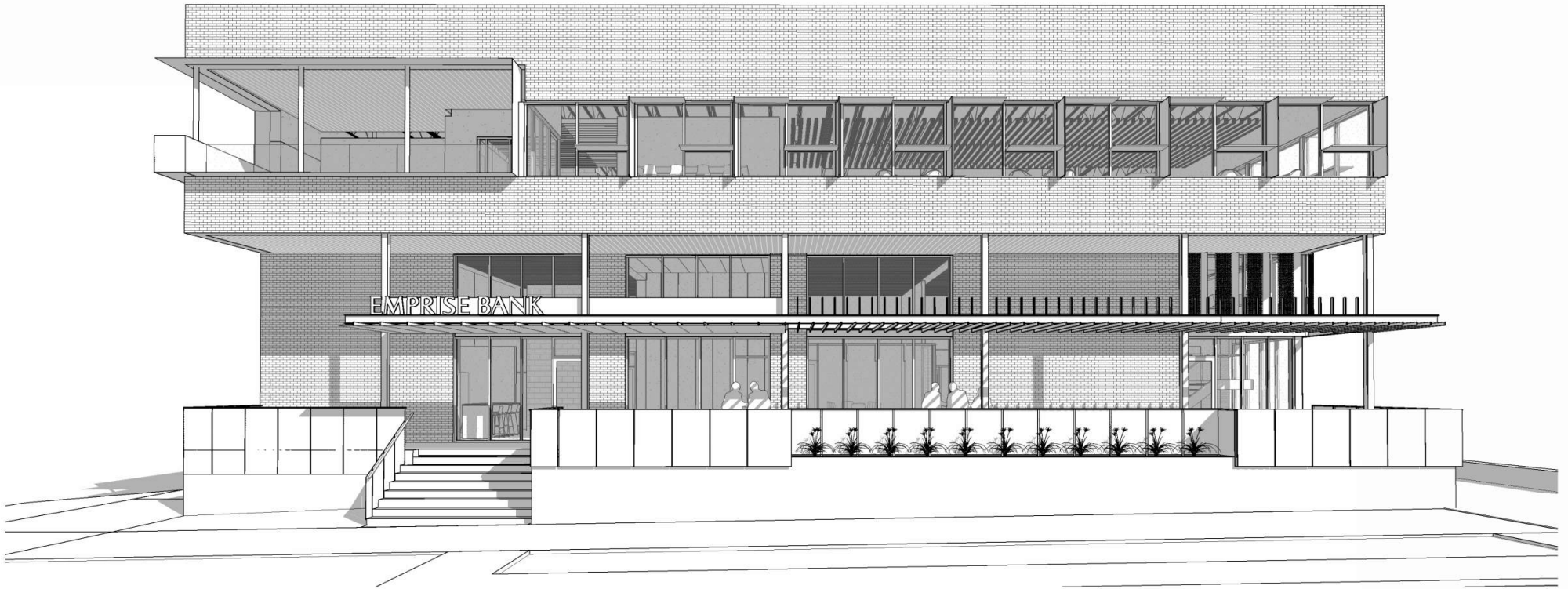
ALTA/NSPS CERTIFICATION:

To: EMPRISE BANK, A KANSAS BANKING CORPORATION, FIRST AMERICAN TITLE INSURANCE COMPANY NATIONAL COMMERCIAL SERVICES

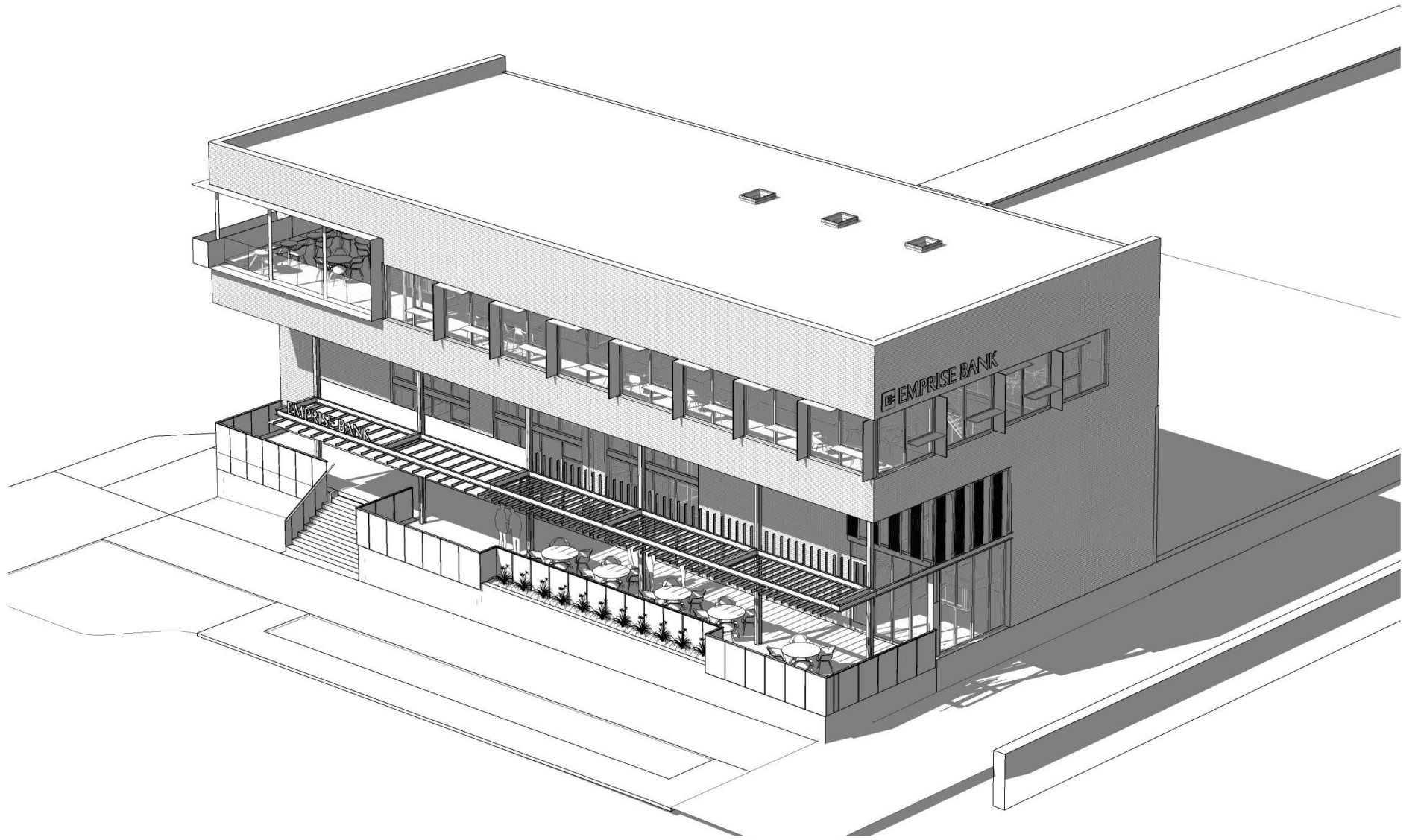
THIS IS TO CERTIFY THAT THIS MAP OR PLAT AND THE SURVEY ON WHICH IT IS BASED WERE MADE IN ACCORDANCE WITH THE 2021 MINIMUM STANDARD DETAIL REQUIREMENTS FOR ALTA/NSPS LAND TITLE SURVEYS, JOINTLY ESTABLISHED AND ADOPTED BY ALTA AND NSPS, AND INCLUDES ITEMS 1, 2, 3, 4, 6(A), 6(B), 7(A), 7(B)(1), 7(C), 8, 9, 10, 11(A), 11(B), 13, 16, 17, 18, AND 19 OF TABLE A THEREOF. THE FIELDWORK WAS COMPLETED ON NOVEMBER 15, 2023.







South Elevation



S
o
u
t

HERMANOS
DESIGN • BUILD • STUDIO