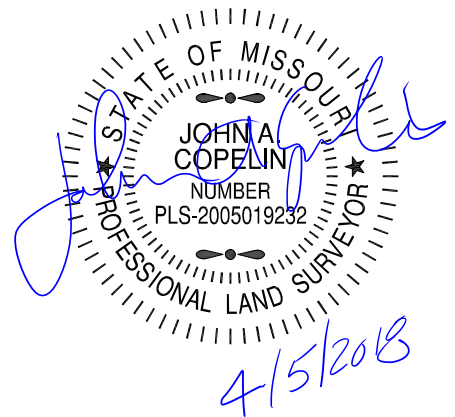
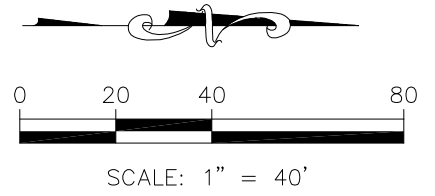
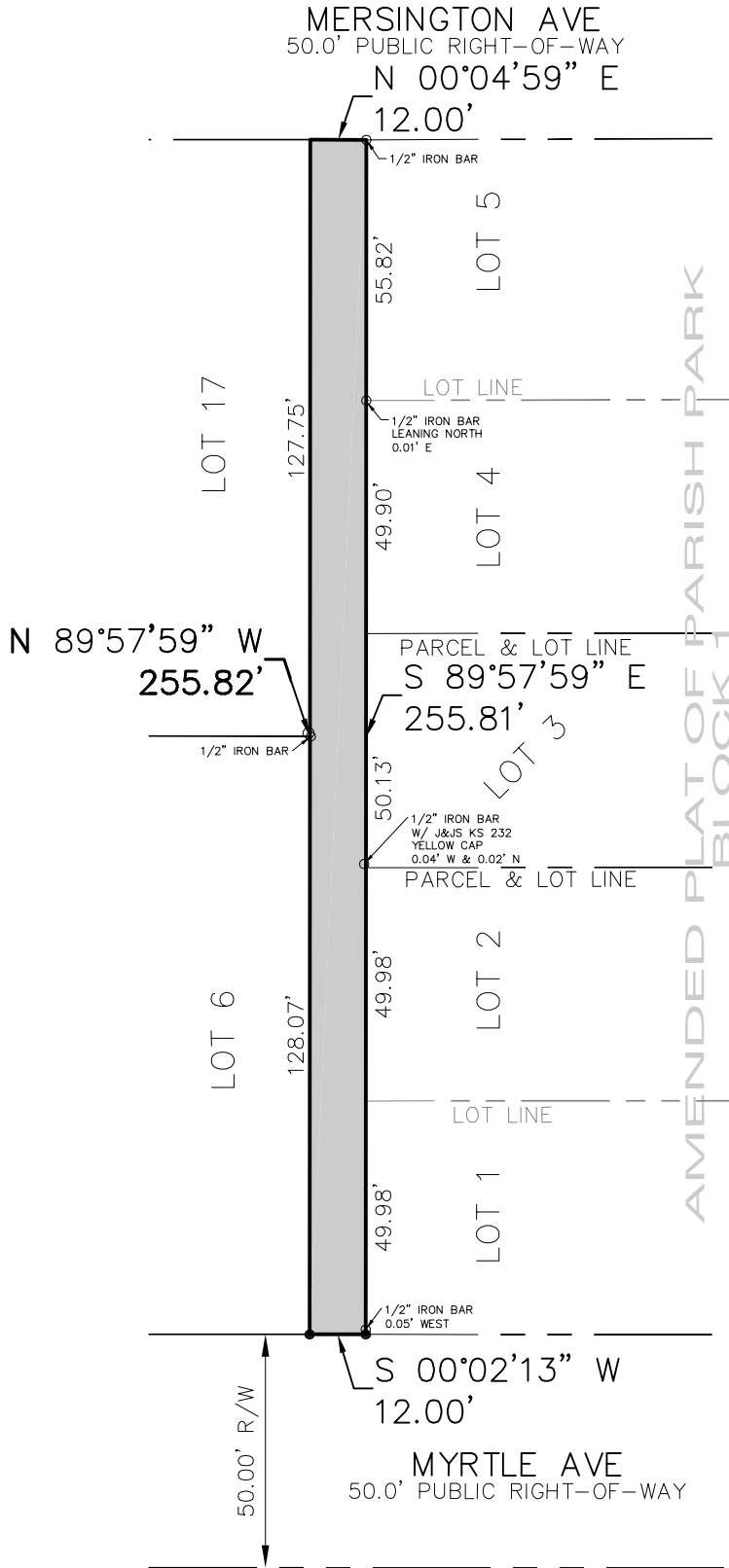


EXHIBIT
ALLEY VACATION



\\vmkc-file\cadd\Civil3D Projects\G16_0271\Survey\0271EXB.dwg, 4/5/2018 1:01:34 PM, jeremyd



KAW VALLEY ENGINEERING

8040 N. OAK TRAFFICWAY
KANSAS CITY, MISSOURI 64118
PH. (816) 468-5858 | FAX (816) 468-6651
kc@kveng.com | www.kveng.com

04/05/2018
0271EXB