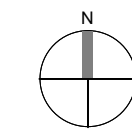




SITE VICINITY MAP
NTS



DRAWING INDEX

- G001 COVER
- C101 OVERALL LAYOUT PLAN
- C201 SITE LAYOUT PLAN
- C301 SITE GRADING PLAN
- C401 SITE UTILITY PLAN
- L300 LANDSCAPE PLAN
- A201 EXTERIOR ELEVATIONS - PARISH CENTER
- A202 EXTERIOR ELEVATIONS - PARISH CENTER
- ME211P MECHANICAL AND ELECTRICAL PHOTOMETRICS



City Plan Commission
Approved Subject to Conditions

of Case No. **CD-CPC-2023-00007** On **02-21-2023**

Joseph Rexwinkle, AICP
Secretary of the Commission

ARCHITECT-OF-RECORD:

SFS ARCHITECTURE
2100 CENTRAL, SUITE 31
KANSAS CITY, MISSOURI 64108

O: 816.474.1397
F: 816.421.8024

CIVIL:

SK DESIGN GROUP, INC
4600 COLLEGE BOULEVARD, SUITE 100
OVERLAND PARK, KANSAS 66211

O: 913.451.1818

LANDSCAPE ARCHITECT:

CONFLUENCE
417 DELAWARE STREET
KANSAS CITY, MISSOURI 64105

O: 816.531.7227

STRUCTURAL:

WALTER P. MOORE
1100 WALNUT, SUITE 1825
KANSAS CITY, MISSOURI 64106

O: 816.701.2100

M/E/P/E ENGINEER:

SMITH & BOUCHER
25501 WEST VALLEY PARKWAY
OLATHE, KANSAS 66061

O: 913.345.2127

ACOUSTIC & A/V CONSULTANT:

AVANT ACOUSTICS
14827 WEST 95TH STREET
LENEXA, KANSAS 66215

O: 913.888.9111

KITCHEN CONSULTANT:

SANTEE/BECKER ASSOCIATES, LLC
6700 SQUIBB ROAD, SUITE 101
MISSION, KANSAS 66202

O: 913.362.1800

CODE CONSULTANT:

FP&C CONSULTANTS
1330 BURLINGTON STREET
NORTH KANSAS CITY, MISSOURI 64116

O: 816.931.3377

OWNER:

CATHOLIC DIOCESE OF KANSAS CITY -
ST. JOSEPH
20 WEST 9TH STREET
KANSAS CITY, MISSOURI 64105

O: 816.756.1850

CONSTRUCTION MANAGER:

JE DUNN
1001 LOCUST STREET
KANSAS CITY, MISSOURI 64106

O: 816.474.8600

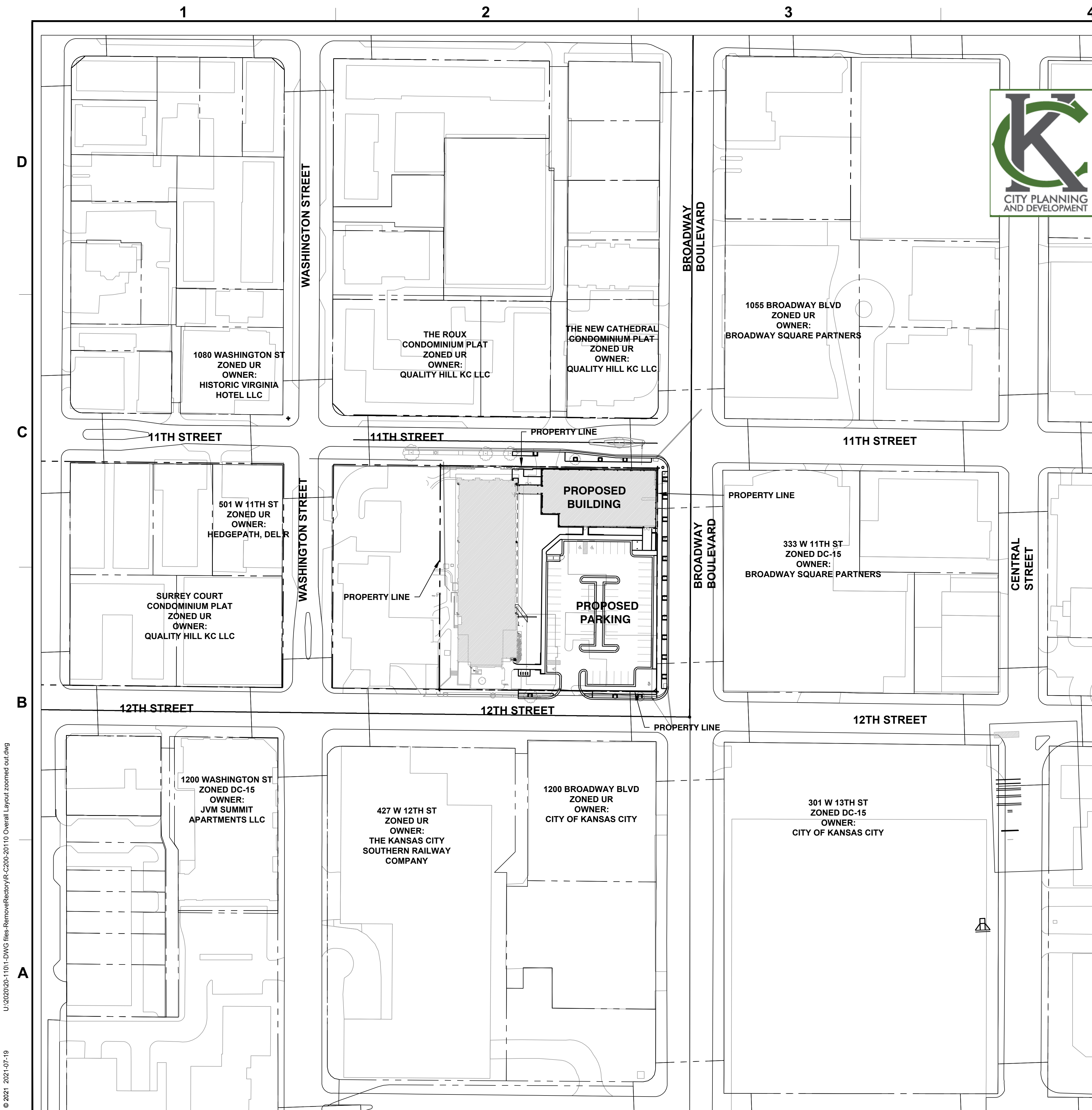
211082

12.21.2021
RESUBMITTAL 4 - 02/06/2023

DEVELOPMENT
PLAN

CATHEDRAL OF THE IMMACULATE CONCEPTION -
EXPANSION
416 W 12TH ST., KANSAS CITY, MO 64105





City Plan Commission
Approved Subject to Conditions
of Case No. CD-CPC-2023-00007 On 02-21-2023

Joseph Rexwinkle
Joseph Rexwinkle, AICP
Secretary of the Commission

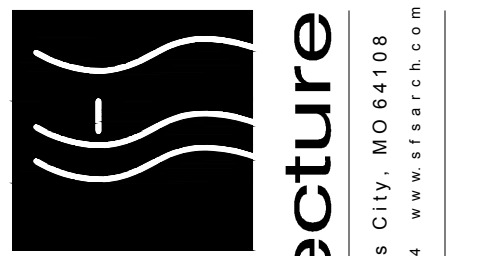
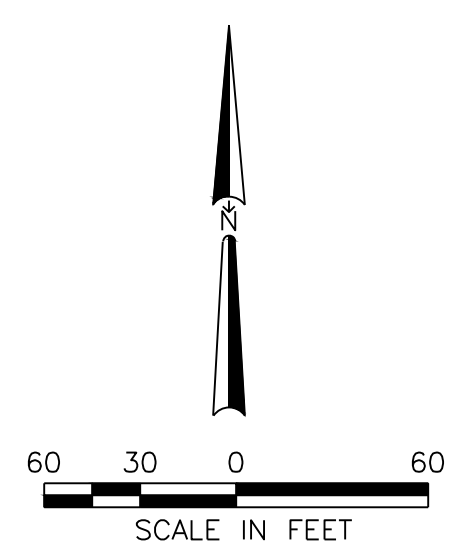
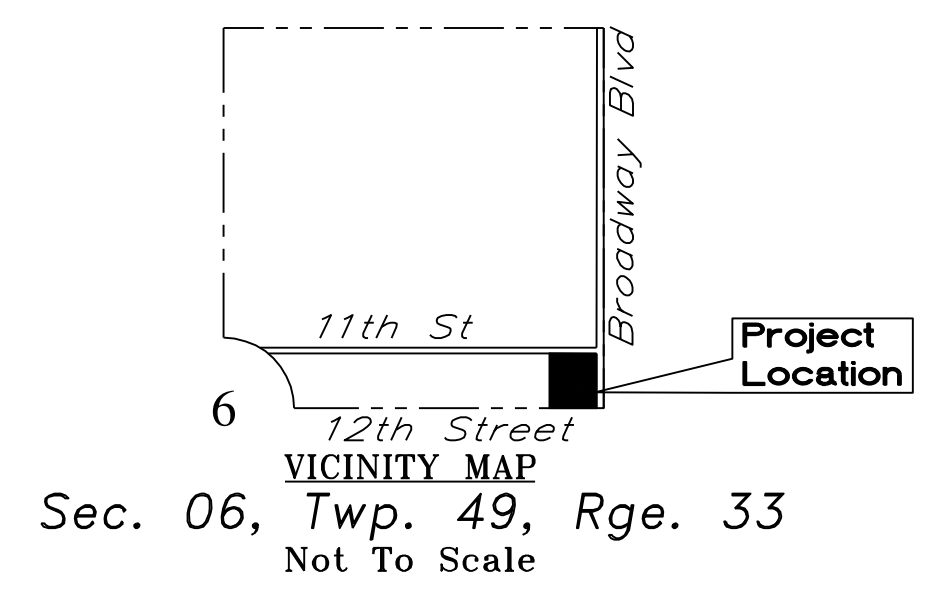
CITY PLANNING AND DEVELOPMENT

DEVELOPMENT SUMMARY TABLE		
Item	Description	
a.	Existing = Zoning DC-15	
	Proposed = Zoning DC-15	
b.	Existing = Total Land Area 70,815 SF	
	Proposed = 1,626 AC	
c.	Existing = Right-of-way Land Area 70,815 SF	
	Proposed = 1,626 AC	
d.	Existing = Net Land Area 70,815 SF	
	Proposed = 1,626 AC	
e.	Existing Two Story Church - Religious Building	
	Proposed Religious Building - Church	
f.	Building Height & Number of Floors	
	Existing Church	160 (Tower) Feet 2 Floors
	Existing Rectory	36 Feet 3 Floors
g.	Gross Floor Area	
	Existing Two Story Church	3,760 SF
	Proposed Religious Building	16,740 SF
h.	Lower Level	9,620 SF
	Level 1	9,100 SF
i.	TOTAL	39,220 SF
	Project Total =	39,220 SF
j.	Building Coverage & Floor Ratio	
	FAR =	0.554
k.	Gross & Net Density	
	Gross Density	N/A units per acre
l.	Vehicle Parking	
	Ratio =	1 per 4 employees
m.	Required Spaces =	0 Zoned DC-15, no off-street parking is required.
	Planned Spaces =	65
n.	Bike Parking	
	Short term Ratio =	10% of parking required(3 minimum)
o.	Required Spaces =	3
	Provided Spaces =	3
p.	Long term Ratio =	1+1/10000sf
	Required Spaces =	7
q.	Provided Spaces =	8 maximum currently used is zero spaces
	Construction TimeLine	
r.	Begin =	March 2023
	Construction =	15 months
s.	Completion =	June 2024
	Amendments to Development Plan	
t.	None	

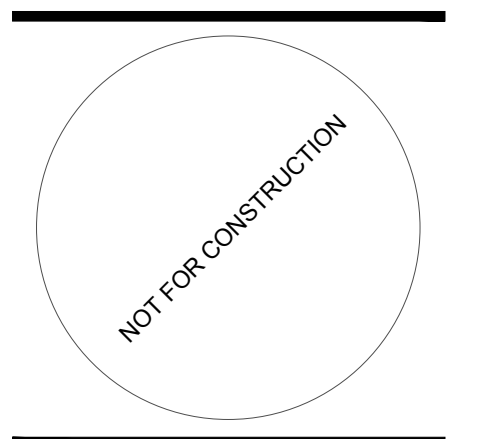
VARIANCES GRANTED BY THE BOARD OF ZONING ADJUSTMENT:

Variance Request (A): A 28-foot variance to the minimum setback of 30 feet for a vehicular use area located on the side or rear of the building, for a total setback of 4 feet. This variance was granted by the Board of Zoning Adjustment on March 8, 2022 through Case No. CD-BZA-2022-00014.

Variance (B): A variance of 35% to the standard that no more than 30% of a site's frontage adjacent to the boulevard or parkway may be used for vehicular use areas, for a total of 65% vehicular use area.



sfs architecture
2100 Central St, Suite 31, Kansas City, MO 64108
(816) 471-1397 | (816) 471-8024 | www.sfsarch.com

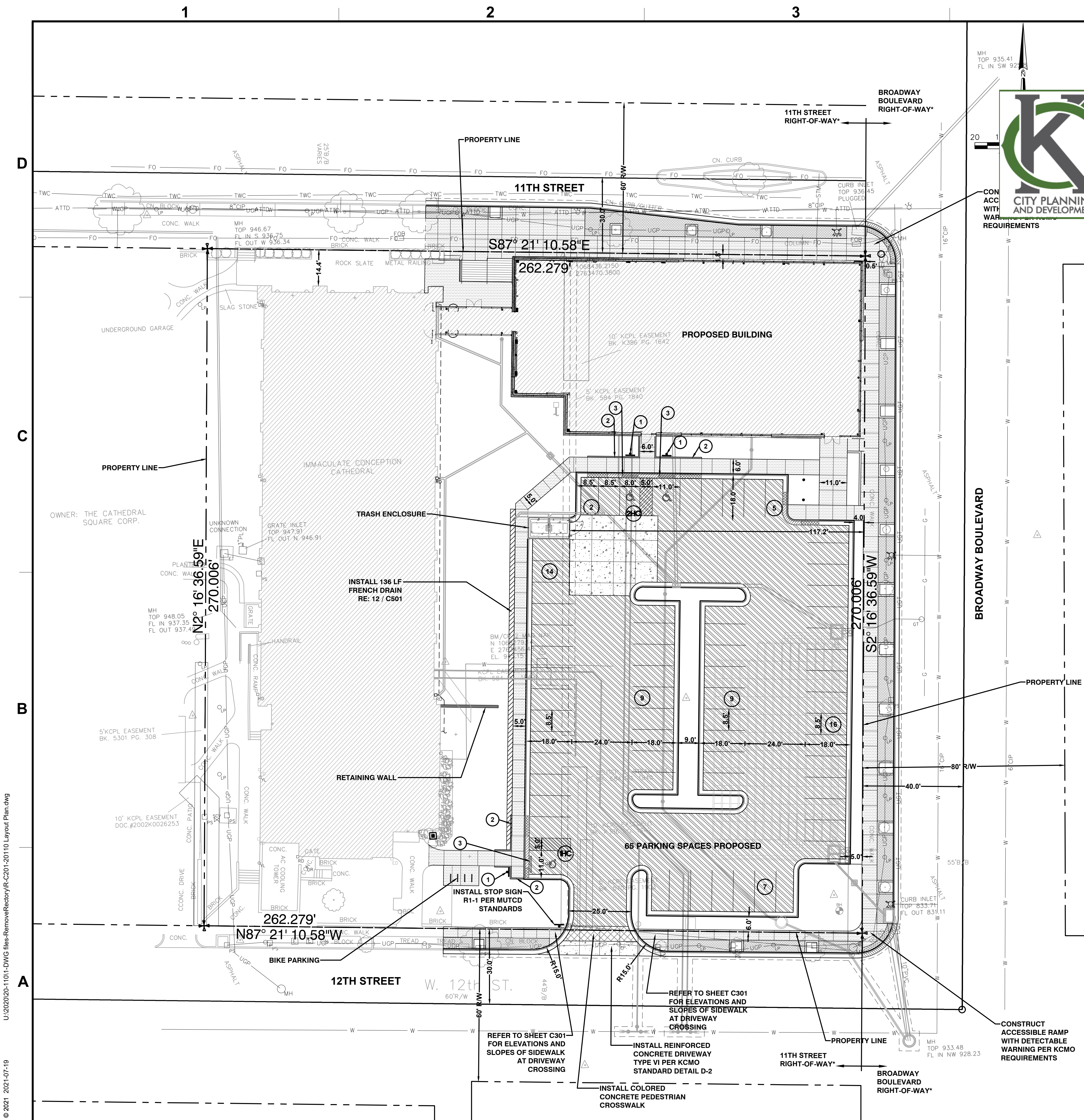


**CATHEDRAL OF THE IMMACULATE
CONCEPTION - EXPANSION**
CATHOLIC DIOCESE OF KANSAS CITY - ST. JOSEPH
416 W 12TH ST, KANSAS
CITY, MO 64105

MARK	DATE	DESCRIPTION
	1/31/22	REVISION 1
	2/28/22	REVISION 2
	1/16/23	REVISION 3
	2/6/23	REVISION 4

SFS PROJECT NO: 211082
ISSUED FOR: DEVELOPMENT PLAN
ISSUE DATE: 12.22.2021
© 2021 SFS ARCHITECTURE
Overall Layout Plan

C101



City Plan Commission
Approved Subject to Conditions
of Case No. CD-CPC-2023-00007 On 02-21-2023

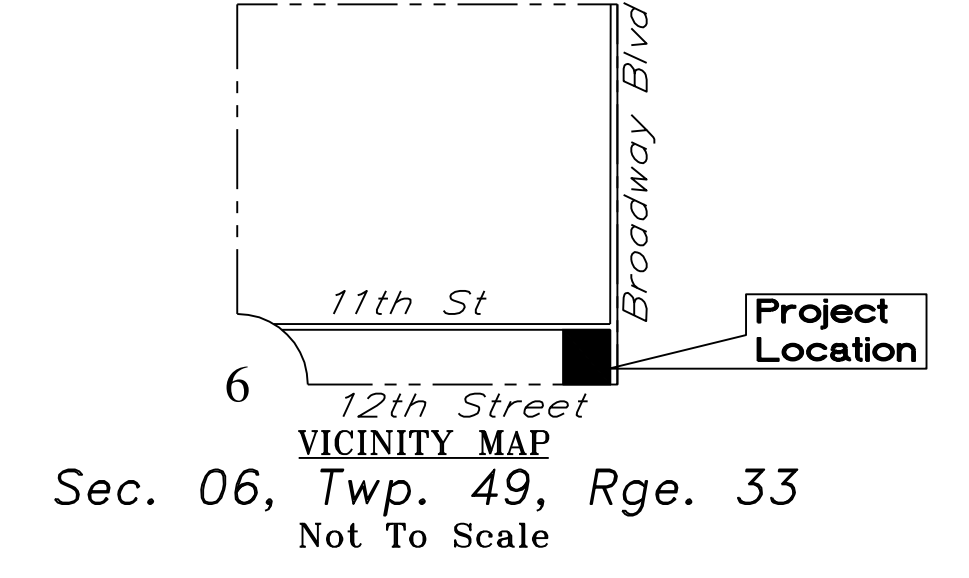
Joseph Rexwinkle
Joseph Rexwinkle, AICP
Secretary of the Commission

LEGEND:

- NEW BUILDING
- ASPHALT PAVEMENT RE: 2 / C501
- NEW PORTLAND CEMENT CONCRETE PAVEMENT
- NEW COLORED PORTLAND CEMENT CONCRETE PAVEMENT FOR PEDESTRIAN CROSSING
- INSTALL BRICK PAVERS RE: 11 / C501
- CONCRETE SIDEWALK
- NEW TYPE CG-1 CURB & GUTTER
- NEW TYPE CG-1 CURB & GUTTER (DRY)
- NEW FLUSH CURB
- CURB HEIGHT TRANSITION 6" HIGH TO 0" HIGH
- ACCESSIBLE PARKING SIGN RE: 9 / C501
- SIDEWALK CURB
- PRECAST CONCRETE WHEEL STOP 13 / C501
- INSTALL DETECTABLE WARNING PER KCMO REQUIREMENTS

LEGAL DESCRIPTION:
416 W 12TH ST SE 1/4 NE 1/4 SEC 6 49 33 BEGINNING NW CORNER 12TH ST & BROADWAY AT PT 30 FT N & 40 FT W OF SE CORNER SD 1/4 1/4 TH N 270 FT TH W 260 FT TH S 270 FT TO N LI 12TH ST TH E TO BEG INCLUDING VAC ALLEYS.

*** NOTE:**
ALL STREETScape WORK IN BROADWAY BOULEVARD RIGHT-OF-WAY SHALL BE CONSTRUCTED PER KANSAS CITY PARKS AND RECREATION STANDARDS.
ALL STREETScape WORK IN 11TH STREET AND 12TH STREET SHALL BE CONSTRUCTED BUILT PER KANSAS CITY PUBLIC WORKS STANDARDS.



***11th AND 12th STREET QUANTITIES**
(OBTAIN PERMIT FROM LDD FOR THE BELOW QUANTITIES IN THE PUBLIC R/W ON 11th STREET AND 12th STREET.)

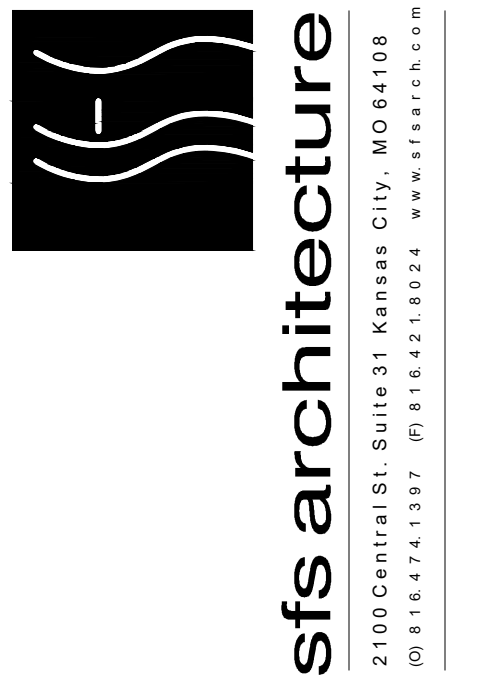
Item No.	Item Description	Quantity	Unit	As-Built	Contract
1	Sawcut	450	LF	--	1
2	Curb Removal	300	LF	--	1
3	New Curb	300	LF	--	1
4	Concrete Sidewalk Removal	250	SY	--	1
5	Brick Sidewalk Removal	150	SY	--	1
6	Concrete Driveway Removal	20	SY	--	1
7	New Concrete Pavement	40	SY	--	1
8	New Concrete Sidewalk	290	SY	--	1
9	New Brick Sidewalk	170	SY	--	1
10	Asphalt Removal	70	SY	--	1
11	New Asphalt	70	SY	--	1
12	Preparation of as-built drawings	1	EA	--	1

*** QUANTITIES SHOWN ABOVE ARE FOR INFORMATION ONLY. CONTRACTOR IS RESPONSIBLE FOR TAKING HIS OWN QUANTITIES.**

***BROADWAY BOULEVARD QUANTITIES**
(OBTAIN PERMIT FROM PARKS AND RECREATION FOR THE BELOW QUANTITIES IN THE PUBLIC R/W ON BROADWAY BOULEVARD.)

Item No.	Item Description	Quantity	Unit	As-Built	Contract
1	Sawcut	300	LF	--	1
2	Curb Removal	310	LF	--	1
3	New Curb	310	LF	--	1
4	Concrete Sidewalk Removal	190	SY	--	1
5	Brick Sidewalk Removal	130	SY	--	1
6	Concrete Driveway Removal	45	SY	--	1
7	New Concrete Sidewalk	210	SY	--	1
8	New Brick Sidewalk	150	SY	--	1
9	Accessible Ramp	2	EA	--	1
10	Asphalt Removal	35	SY	--	1
11	New Asphalt	35	SY	--	1
12	Preparation of as-built drawings	1	EA	--	1

*** QUANTITIES SHOWN ABOVE ARE FOR INFORMATION ONLY. CONTRACTOR IS RESPONSIBLE FOR TAKING HIS OWN QUANTITIES.**

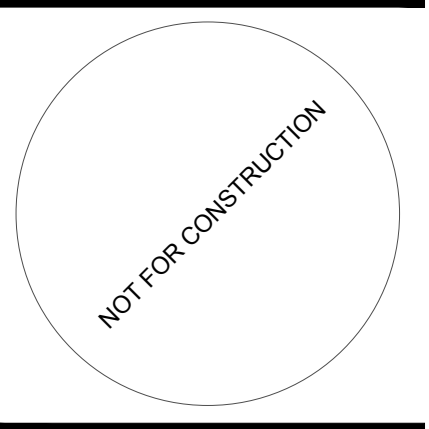


CATHEDRAL OF THE IMMACULATE CONCEPTION - EXPANSION
CATHOLIC DIOCESE OF KANSAS CITY - ST. JOSEPH
416 W 12TH ST, KANSAS CITY, MO 64105

MARK	DATE	DESCRIPTION
	1/31/22	REVISION 1
	2/28/22	REVISION 2
	1/16/23	REVISION 3
	2/6/23	REVISION 4

SFS PROJECT NO: 211082
ISSUED FOR: DEVELOPMENT PLAN
ISSUE DATE: 12.22.2021
© 2021 SFS ARCHITECTURE
Site Layout Plan

C201

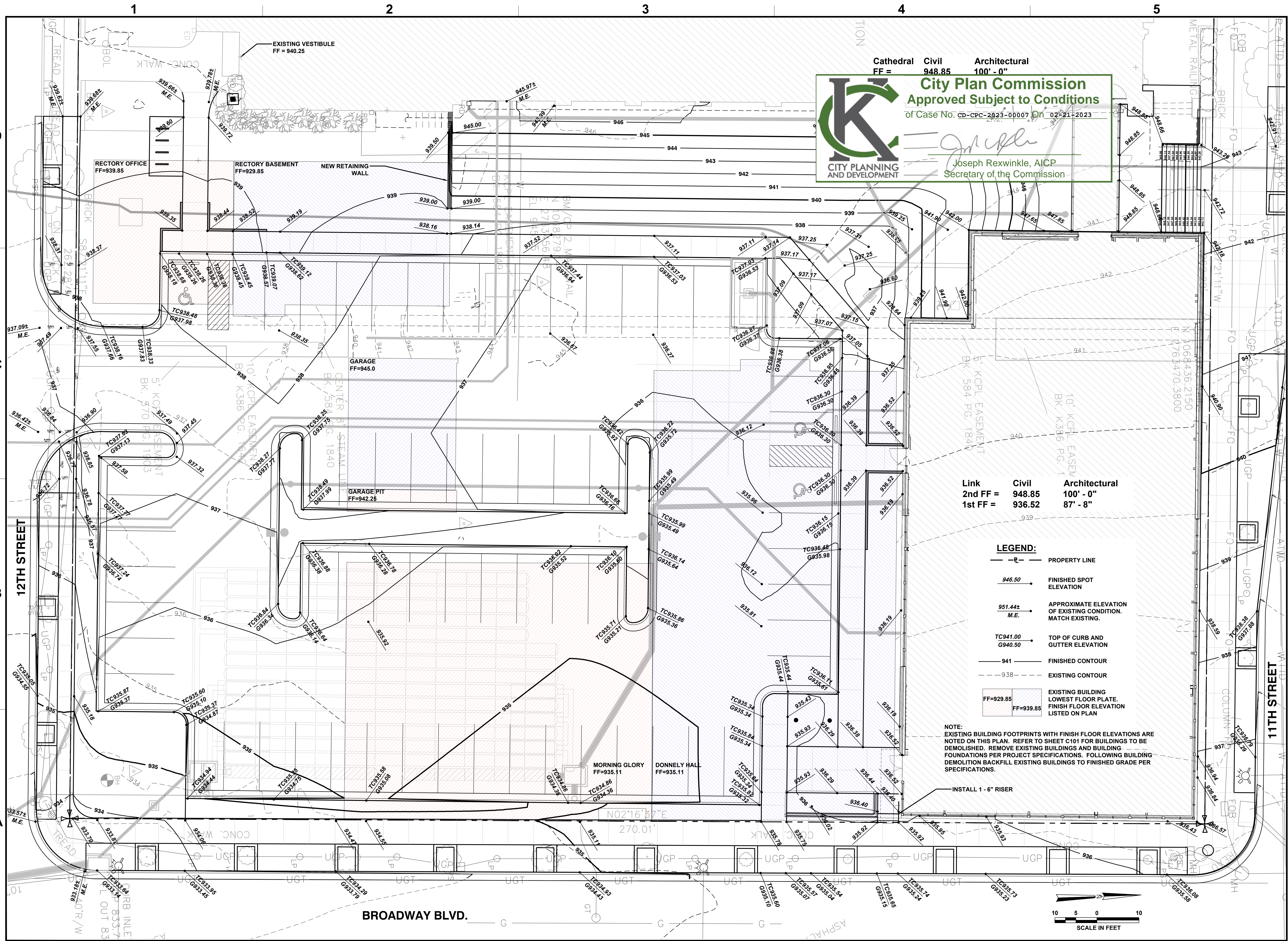


**CATHEDRAL OF THE IMMACULATE
 CONCEPTION - EXPANSION**
 CATHOLIC DIOCESE OF KANSAS CITY - ST. JOSEPH
 416 W 12TH ST, KANSAS
 CITY, MO 64105

MARK	DATE	DESCRIPTION
	1/31/22	REVISION 1
	2/28/22	REVISION 2
	1/16/23	REVISION 3
	2/6/23	REVISION 4

SFS PROJECT NO: 211082
 ISSUED FOR: DEVELOPMENT PLAN
 ISSUE DATE: 12.22.2021
 © 2021 SFS ARCHITECTURE
 Site Grading Plan

C301



Cathedral Civil Architectural
 FF = 948.85 100' - 0"

City Planning and Development
City Plan Commission
 Approved Subject to Conditions
 of Case No. CD-CPC-2023-00007 On 02-21-2023

Joseph Rexwinkle
 Joseph Rexwinkle, AICP
 Secretary of the Commission

U:\202020-1101-DWG files-Remove\Reactory\C301-20110Grading.dwg
 © 2021, 2021-07-19

1

2

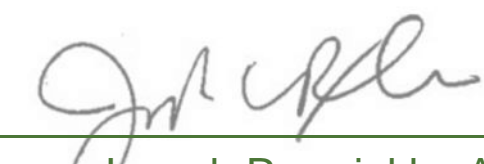
3

4

5

D
C
B
A


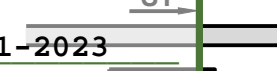



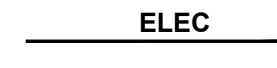
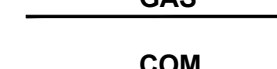




City Plan Commission
Approved Subject to Conditions
 of Case No. CD-CPC-2023-00007 On 02-21-2023



Joseph Rexwinkle, AICP
 Secretary of the Commission



LEGEND:

-  NEW BUILDING
-  NEW STORM SEWER
-  NEW STORM STRUCTURE / INLET
-  NEW ROOF DRAIN
-  NEW SANITARY SERVICE
-  NEW WATER MAIN
-  NEW ELECTRIC
-  NEW GAS
-  NEW COMMUNICATIONS
-  4" PERFORATED HDPE TYPE S FOUNDATION DRAIN
-  4" SOLID WALL HDPE TYPE S FOUNDATION DRAIN

WATER SERVICE NOTES:

1. ALL WATER SERVICE INSTALLATIONS INCLUDING BACKFLOW DEVICES ARE SUBJECT TO FIELD VERIFICATION AND APPROVAL BY THE WATER DEPARTMENT INSPECTOR.
2. SERVICE LINES SHALL HAVE A COVER OF NOT LESS THAN FOUR (4) FEET NOR MORE THAN FIVE (5) FEET, UNLESS OBSTRUCTIONS REQUIRE DEEPER EXCAVATION FOR DEEPER EXCAVATION FOR CLEARANCE.
3. WHERE SERVICE LINES MUST CROSS OVER SEWERS, STORM DRAINS, OR SANITARY SEWERS, THE SERVICE LINE MUST BE LAID AT SUCH AN ELEVATION THAT THE BOTTOM OF THE SERVICE LINE IS AT LEAST 18" ABOVE THE TOP OF THE SEWER. THIS VERTICAL SEPARATION MUST BE MAINTAINED FOR THAT PORTION OF THE SERVICE LINE LOCATED WITHIN 10 FEET HORIZONTALLY OF ANY SEWER OR SEWER LINE THAT IT CROSSES, SAID 10 FEET TO BE MEASURED AS THE NORMAL DISTANCE FROM THE SERVICE LINE TO THE SEWER.

GAS SERVICE NOTE:

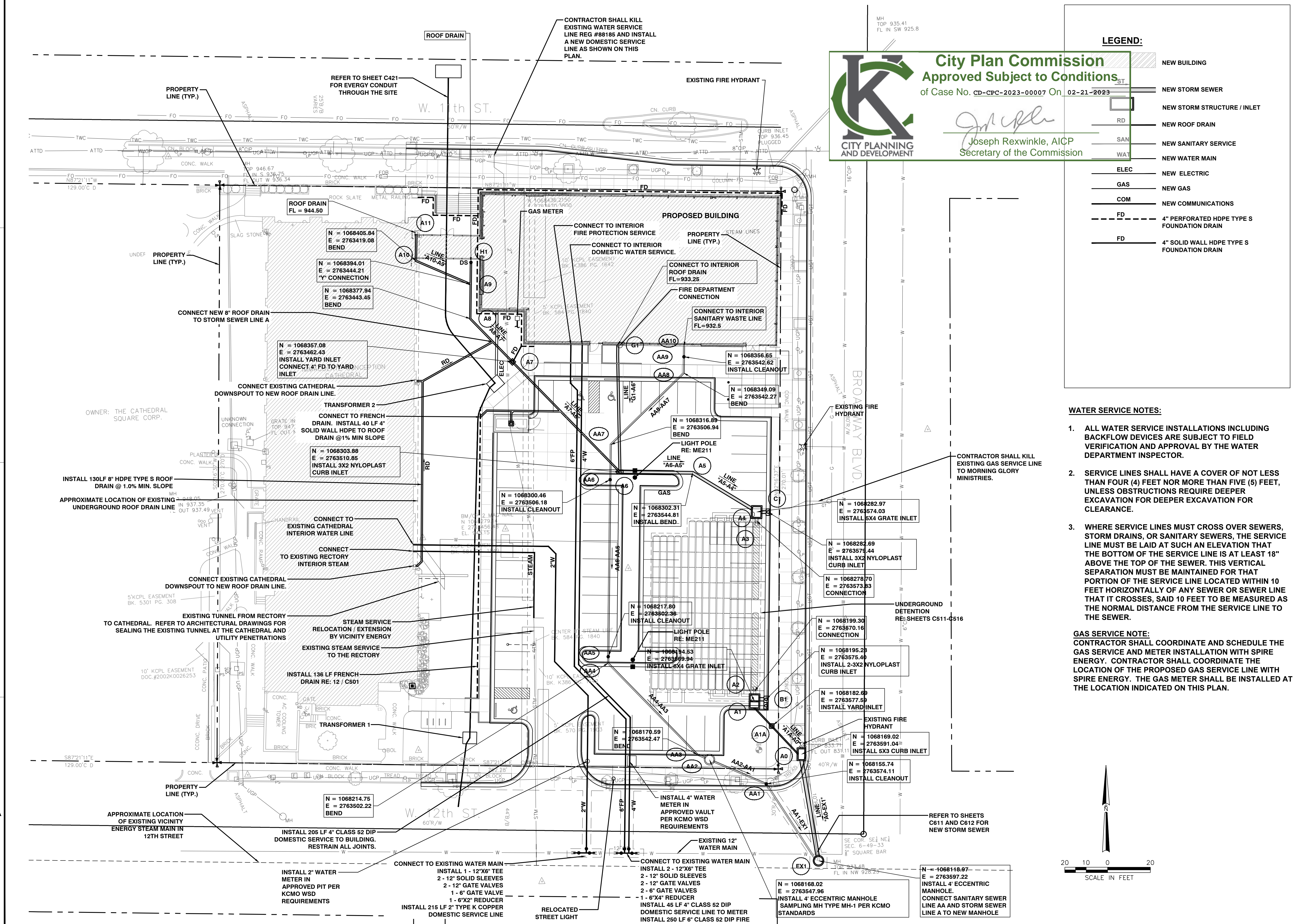
CONTRACTOR SHALL COORDINATE AND SCHEDULE THE GAS SERVICE AND METER INSTALLATION WITH SPIRE ENERGY. CONTRACTOR SHALL COORDINATE THE LOCATION OF THE PROPOSED GAS SERVICE LINE WITH SPIRE ENERGY. THE GAS METER SHALL BE INSTALLED AT THE LOCATION INDICATED ON THIS PLAN.

**CATHEDRAL OF THE IMMACULATE
 CONCEPTION - EXPANSION**
 CATHOLIC DIOCESE OF KANSAS CITY - ST. JOSEPH
 416 W 12TH ST, KANSAS
 CITY, MO 64105

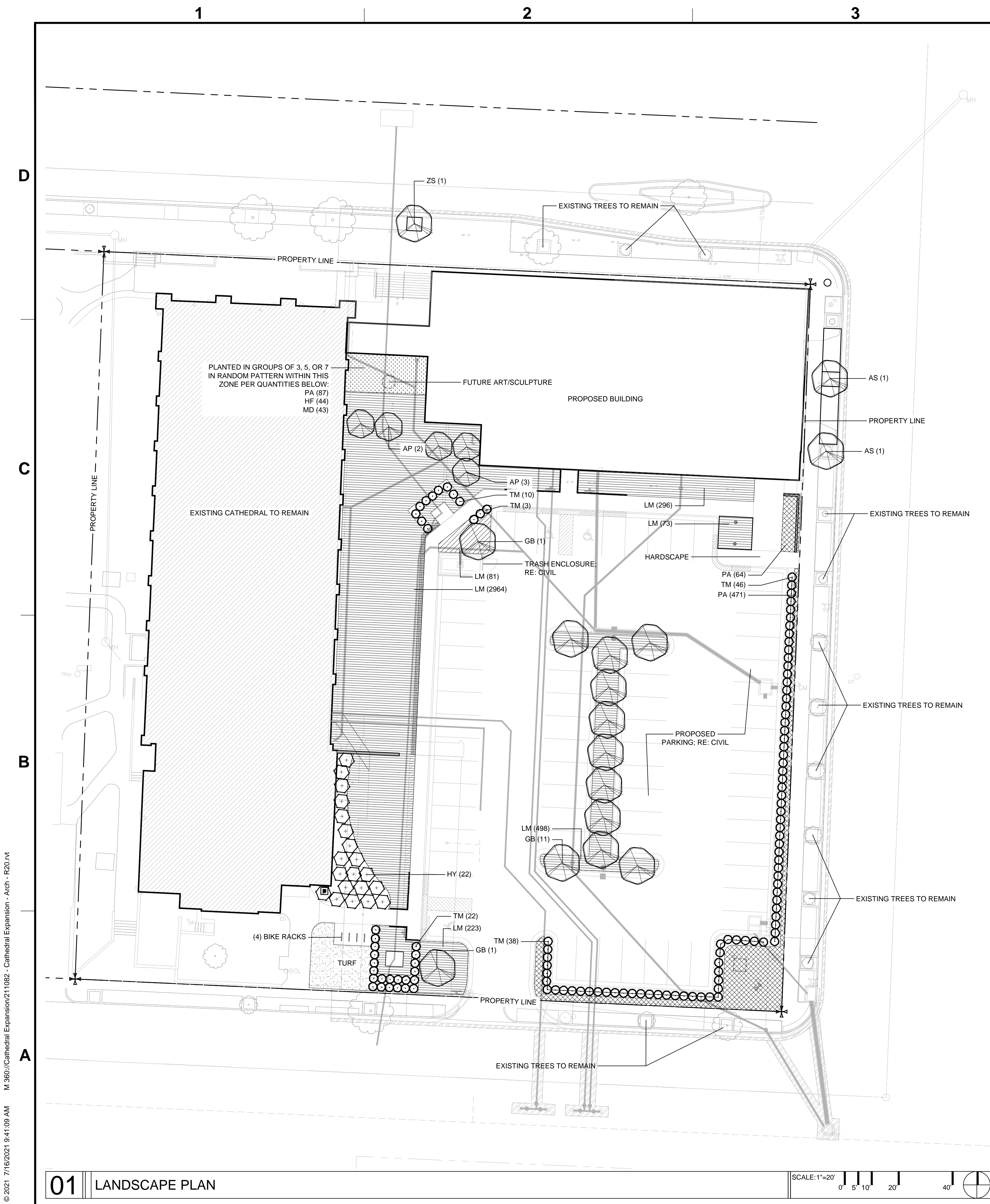
MARK	DATE	DESCRIPTION
	1/31/22	REVISION 1
	2/28/22	REVISION 2
	1/16/23	REVISION 3
	2/6/23	REVISION 4

SFS PROJECT NO: 211082
 ISSUED FOR: DEVELOPMENT PLAN
 ISSUE DATE: 12.22.2021
 © 2021 SFS ARCHITECTURE
Site Utility Plan

C401



U:\202020-1101-DWG files-Remove\Reactory\C401-20110 Utility Plan.dwg
 © 2021 07-19



KEY	QTY.	BOTANICAL NAME	COMMON NAME	SIZE	ROOT	SPACING & REMARKS
OVERSTORY TREES						
		<i>accharis distachya</i>	ZELENYA	2" CAL.	B&B	TREE FORM - SINGLE STEM
		<i>strata Musango</i>	ZELENYA	2" CAL.	B&B	TREE FORM - SINGLE STEM
		<i>peruvia atriplicifolia</i>	RUSSIAN SAGE	2" CAL.	B&B	TREE FORM - MULTI-STEM
		<i>bioba fastigiata</i>	FRUITLESS	2" CAL.	B&B	FRUITLESS
HRUBS						
		<i>gea macroph</i>	ORANGEA	5-0" MIN. HT.	CONT.	AS SEEN ON PLANS
		<i>x media Hick</i>		5-0" MIN. HT.	CONT.	AS SEEN ON PLANS
PERENNIALS						
		<i>ocallis fulva</i>		#1 GAL.	CONT.	18" TRIANGULAR SPACING
		<i>muscalli</i>		#1 GAL.	CONT.	18" TRIANGULAR SPACING
		<i>fa ridyuma</i>		#1 GAL.	CONT.	18" TRIANGULAR SPACING
		<i>Perovkia atriplicifolia</i>	RUSSIAN SAGE	#1 GAL.	CONT.	18" TRIANGULAR SPACING

City Plan Commission
Approved Subject to Conditions
 of Case No. **CD-CPC-2023-00007** ON **02-21-2023**

Joseph Rexwinkle
Joseph Rexwinkle, AICP
 Secretary of the Commission

PLANTING GENERAL NOTES

- A. PLANT QUANTITIES IN PLANT SCHEDULE ARE FOR CONVENIENCE ONLY AND ARE NOT GUARANTEED. QUANTITIES ON PLAN WILL PREVAIL IF DISCREPANCIES OCCUR.
- B. THE CONTRACTOR SHALL SHOW PROOF OF PROCUREMENT, SOURCES, QUANTITIES AND VARIETIES FOR ALL SHRUBS, PERENNIALS, ORNAMENTAL GRASSES, AND ANNUALS WITHIN 21 DAYS FOLLOWING THE AWARD OF CONTRACT. TIMELY PROCUREMENT OF ALL PLANT MATERIAL IS ESSENTIAL TO THE SUCCESSFUL COMPLETION AND ACCEPTANCE OF THE PROJECT.
- C. SUBSTITUTIONS SHALL ONLY BE ALLOWED WHEN THE CONTRACTOR HAS EXHAUSTED ALL SOURCES FOR THE SPECIFIED MATERIAL, AND HAS PROVEN THAT THE SPECIFIED MATERIAL IS NOT AVAILABLE. THE CONTRACTOR MUST PROVIDE NAME AND VARIETY OF SUBSTITUTION TO THE LANDSCAPE ARCHITECT FOR APPROVAL PRIOR TO TAGGING OR PLANTING. SUBSTITUTIONS SHALL BE NEAREST EQUIVALENT SIZE OF VARIETY OF PLANT HAVING SAME ESSENTIAL CHARACTERISTICS.
- D. ALL PLANT MATERIAL SHALL BE NURSERY GROWN, SOUND, HEALTHY, VIGOROUS AND FREE FROM INSECTS, DISEASE AND INJURIES, WITH HABIT OF GROWTH THAT IS NORMAL FOR THE SPECIES. SIZES SHALL BE EQUAL TO OR EXCEEDING SIZES INDICATED ON THE PLANT LIST. KIND, SIZE AND QUALITY OF PLANT MATERIAL SHALL CONFORM TO THE AMERICAN STANDARD FOR NURSERY STOCK (ANSI Z60.1), MOST RECENT EDITION.
- E. STAKE OR PLACE ALL PLANTS IN FIELD AS INDICATED ON THE DRAWINGS OR AS DIRECTED BY THE LANDSCAPE ARCHITECT FOR APPROVAL PRIOR TO PLANTING.
- F. PLANT FIVE TREES FOR LANDSCAPE ARCHITECT APPROVAL PRIOR TO PLANTING THE REMAINING TREES ON SITE. DEMONSTRATION SHOULD ILLUSTRATE A COMPREHENSIVE UNDERSTANDING OF INFORMATION INCLUDED IN PLANTING DETAILS AND SPECIFICATIONS.
- G. PROVIDE A MINIMUM OF 48 HOURS NOTICE FOR APPROVAL OF PLANT LAYOUT AND SAMPLE TREE PLANTINGS.
- H. THE CONTRACTOR SHALL REPORT SUBSURFACE SOIL OR DRAINAGE PROBLEMS TO THE LANDSCAPE ARCHITECT PRIOR TO PLANTING.
- I. SOD ALL AREAS WITHIN CONTRACT LIMITS, NOT COVERED BY PAVING, BUILDINGS, OR PLANTING BEDS, UNLESS OTHERWISE NOTED.
- J. CONTRACTOR SHALL PLACE SHREDDED BARK MULCH AROUND ALL TREES AND IN ALL PLANTING BEDS TO A DEPTH OF 3".
- K. SEE IRRIGATION PERFORMANCE SPECIFICATION FOR REQUIREMENTS. ALL LANDSCAPE BEDS AS PART OF THIS PROJECT TO BE IRRIGATED.

CITY REQUIREMENTS:

- 1. 88-425-05-B: ADJACENT TO STREETS
 - 1.1. 3' WIDE BUFFER STRIP REQUIRED - PROVIDED
 - 1.2. CONTINUOUS SHRUB BOUNDARY 3' HIGH MIN. - PROVIDED
- 2. 88-425-06-B: MINIMUM INTERIOR LANDSCAPE AREA
 - 2.1. 35 SF PER PARKING STALL (65 STALLS=2,275 SF REQUIRED) - 2,295 SF PROVIDED
- 3. 88-425-06-E: PLANT MATERIAL
 - 3.1. 1 TREE PER 5 PARKING SPACE (65 STALLS = 13 REQUIRED) - PROVIDED



LANDSCAPE ARCHITECT
CONFLUENCE
 417 DELAWARE STREET
 KANSAS CITY, MISSOURI 64105
 PH: 816.531.7227



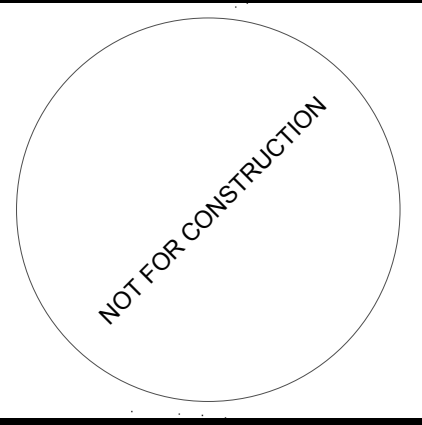
CATHEDRAL OF THE IMMACULATE CONCEPTION - EXPANSION
 CATHOLIC DIOCESE OF KANSAS CITY - ST. JOSEPH
 416 W 12TH ST, KANSAS CITY, MO 64105

MARK	DATE	DESCRIPTION
	01/31/22	REVISION 1
	02/28/22	REVISION 2
	01/16/23	REVISION 3
	02/06/23	REVISION 4

SFS PROJECT NO: 211082
 ISSUED FOR: DEVELOPMENT PLAN
 ISSUE DATE: 12.22.2021
 © 2021 SFS ARCHITECTURE
LANDSCAPE PLAN

L300

© 2021 7/16/2021 9:41:09 AM M:\360\Cathedral Expansion\211082 - Cathedral Expansion - Arch - R20.rvt



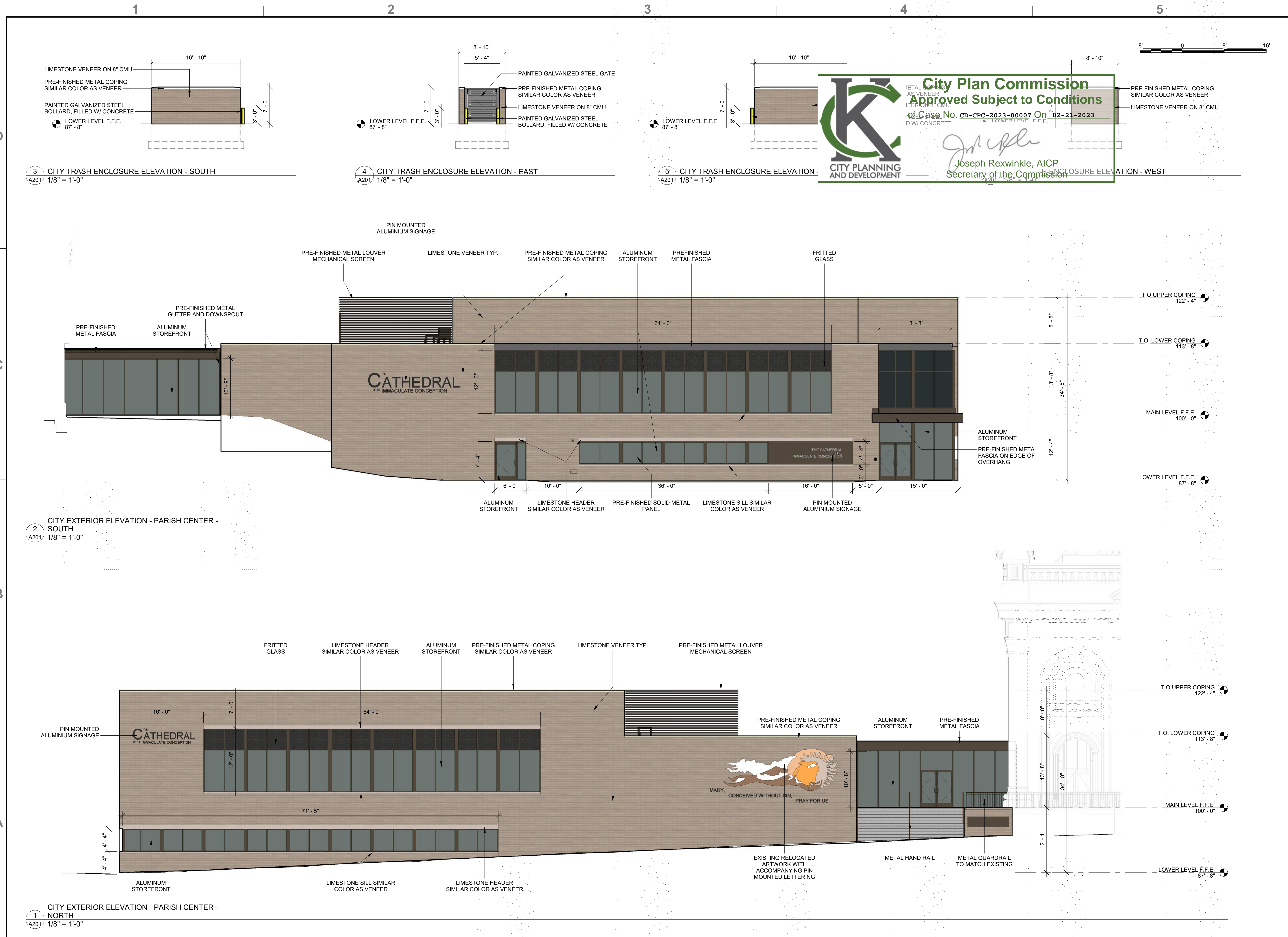
CATHEDRAL OF THE IMMACULATE CONCEPTION - EXPANSION
 CATHOLIC DIOCESE OF KANSAS CITY - ST. JOSEPH
 416 W 12TH ST., KANSAS CITY, MO 64105

MARK	DATE	DESCRIPTION
	01/31/22	REVISION 1
	02/28/22	REVISION 2
	01/16/23	REVISION 3
	02/06/23	REVISION 4

SFS PROJECT NO: 211082
 ISSUED FOR: DEVELOPMENT PLAN
 ISSUE DATE: 12.21.2021
 © 2021 SFS ARCHITECTURE

EXTERIOR ELEVATIONS - PARISH CENTER

A201



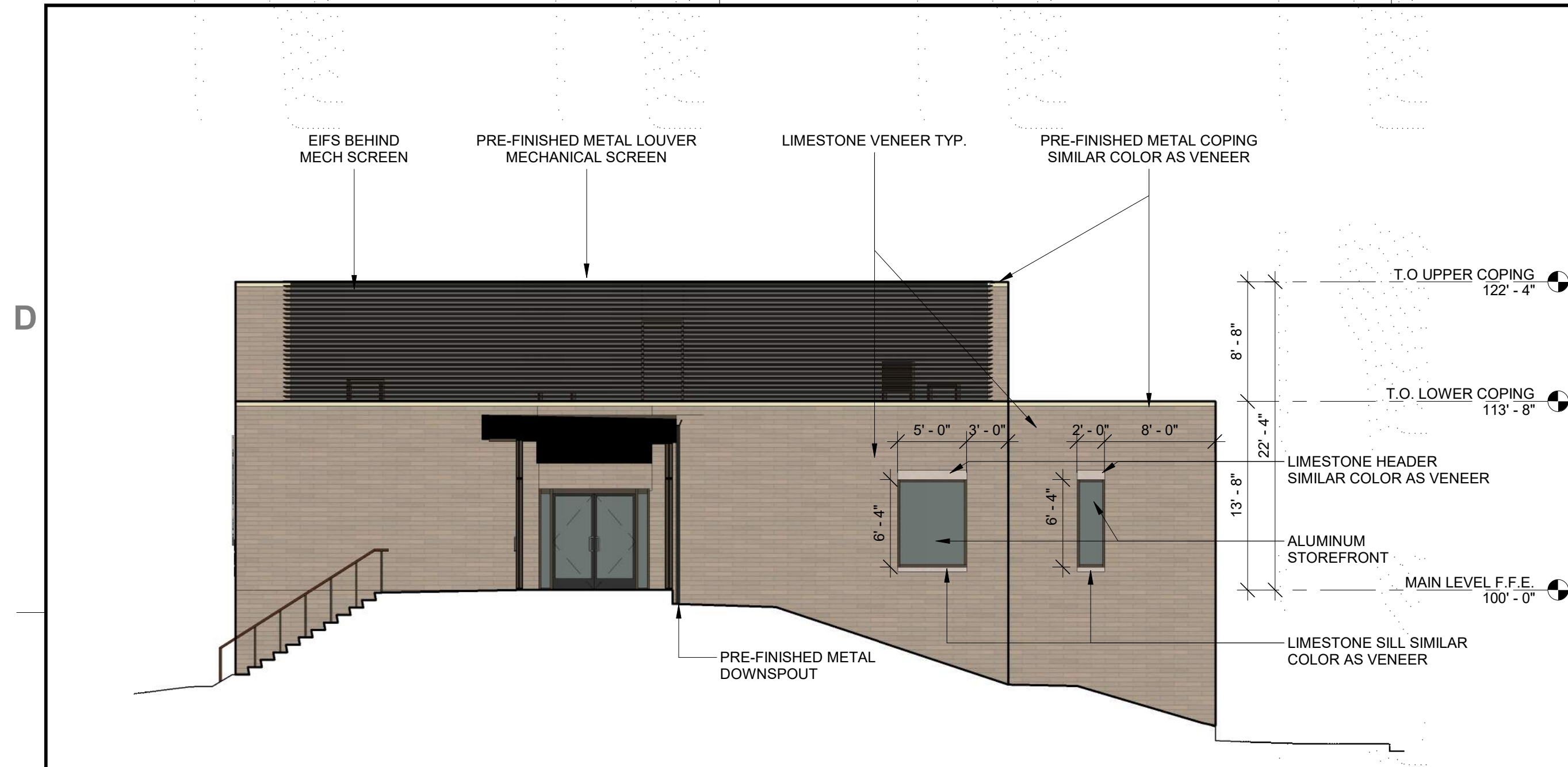
1

2

3

4

5



2 CITY EXTERIOR ELEVATION - PARISH CENTER - WEST AT LINK
A202 1/8" = 1'-0"

AREA OF TRANSPARENCY WITH DESIGN CHANGE 533 SQFT
TOTAL AREA OF GROUND LEVEL 876 SQFT
PERCENTAGE OF TRANSPARENCY 61%

- SOLID GROUND LEVEL ELEVATION (39%)
- TRANSPARENT GROUND LEVEL ELEVATION (61%)
- NOT APPLICABLE TO GROUND LEVEL ELEVATION

City Plan Commission
Approved Subject to Conditions
of Case No. CD-CPC-2023-00007 On 02-21-2023

Joseph Rexwinkle, AICP
Secretary of the Commission



3 FACADE TRANSPARENCY STUDY DIAGRAM
A202 1/8" = 1'-0"

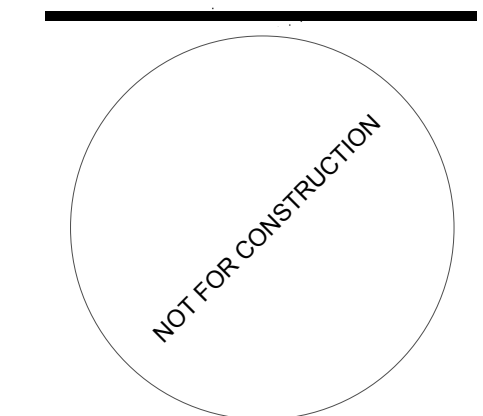
C

B

A



1 CITY EXTERIOR ELEVATION - PARISH CENTER - EAST
A202 1/8" = 1'-0"



CATHEDRAL OF THE IMMACULATE
CONCEPTION - EXPANSION
CATHOLIC DIOCESE OF KANSAS CITY - ST. JOSEPH
416 W 12TH ST, KANSAS
CITY, MO 64105

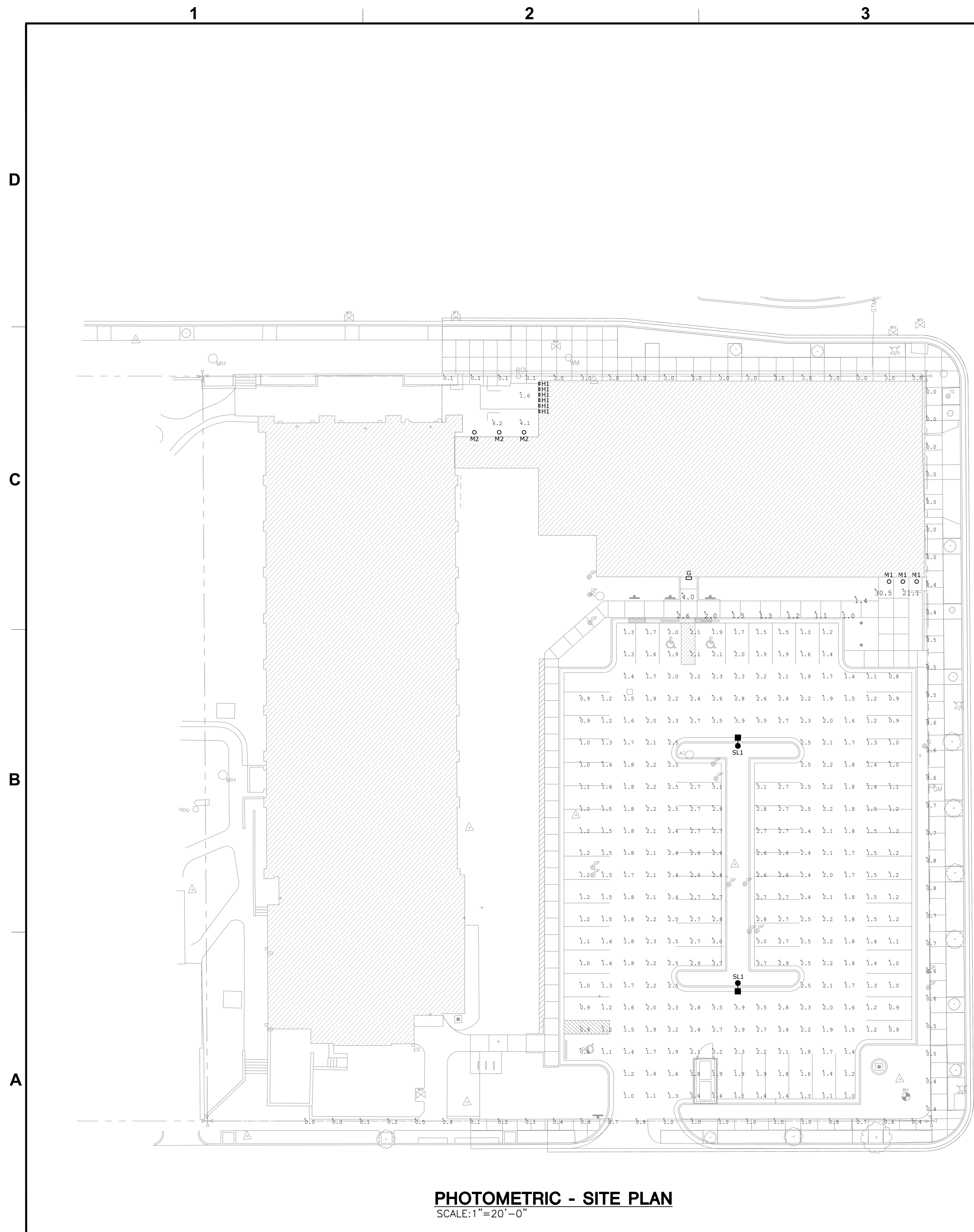
MARK	DATE	DESCRIPTION
	01/31/22	REVISION 1
	02/28/22	REVISION 2

SFS PROJECT NO: 211082
ISSUED FOR: DEVELOPMENT PLAN
ISSUE DATE: 12.21.2021
© 2021 SFS ARCHITECTURE
EXTERIOR ELEVATIONS - PARISH CENTER

A202

PROJECT NAME: Cathedral of the Immaculate Conception - Expansion
 AUTOCAD FILE LOCATION \NAME:
 LAST CORRECTION BY: DATE • TIME:
 PLOTTED BY: DATE • TIME:
 C:\20\2016\1\2016101\Drawings\01-2016101_ME211P.dwg
 Babiels Wednesday, January 11, 2023 11:00:52 PM
 Bosty Charles Wednesday, January 11, 2023 11:17:26 PM

50
30
20
10
0
feet
scale: 1" = 20'-0"

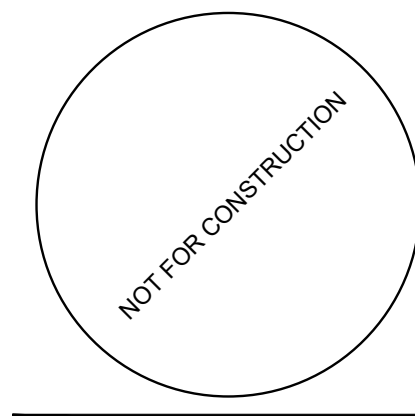


PHOTOMETRIC - SITE PLAN
 SCALE: 1"=20'-0"

LIGHT FIXTURE SCHEDULE						
TYPE	DESCRIPTION	MOUNTING	SOURCE	VOLTS	MANUFACTURER	V-A
G	MINI SCONCE LED FIXTURE (12"Lx7"Wx6"H). TYPE IV FORWARD THROW DISTRIBUTION. RATED FOR WET LOCATIONS. INTEGRAL DRIVER. COORDINATE DESIRED MOUNTING HEIGHT AND CURVATURE.	SURFACE WALL	1,768 LUMEN 3500K 70 CRI	120 OR UNV	SIGNIFY SERIES - 111L LITHONIA SERIES WDGE1 HUBBELL SERIES RWL1 WILLIAMS SERIES VWM	18
H1	WET LOCATION COVERPLATE AND MILKY WHITE GLASS. (WALL MOUNTED)	RECESSED	1,500 LUMEN 3500K 90 CRI	120 OR UNV	SPI LIGHTING SERIES EEW12121 SISTEMALUX SERIES S6320W REBELLE LTG SERIES 2400SSLED BEGA SERIES 33053	4
M1	2" RECESSED LED SEMI-SPECULAR DIMMABLE DRIVER. (WALL MOUNTED)	RECESSED	2,000 LUMEN 3500K 90 CRI	120 OR UNV	GOTHAM SERIES INCITO PORTFOLIO SERIES LD2B PRESCOLITE SERIES D2LED CALCULITE SERIES C2DL	20
M2	2" RECESSED LED DOWNLIGHT, COMMERCIAL GRADE, MEDIUM OPTICS (55 DEG). SEMI-SPECULAR REFLECTOR, PAINTED WHITE TRIM FLANGE. INTEGRAL 0-10V 10% DIMMABLE DRIVER. WET LOCATION RATED WHEN BELOW COVERED CEILING.	RECESSED	2,000 LUMEN 3500K 90 CRI	120 OR UNV	GOTHAM SERIES INCITO PORTFOLIO SERIES LD2B PRESCOLITE SERIES D2LED CALCULITE SERIES C2DL	29
SL1	SINGLE HEAD LED PARKING LOT POLE FIXTURE. TYPE V (T5M) DISTRIBUTION. INTEGRAL 10% 0-10V DIMMING DRIVER. UL LISTED FOR WET LOCATIONS. ARM MOUNTED. MAXIMUM 1000mA DRIVE CURRENT, FULL CUTOFF. COORDINATE DESIRED FINISH WITH ARCHITECT. PROVIDE WITH 20'-0" SQUARE STEEL POLE.	CONCRETE BASE	32,000 LUMEN 3000K 90 CRI	UNV	LITHONIA SERIES DSX2 MCGRAW EDISON SERIES GALLEON BEACON SERIES VIPER LSI SERIES MRM	270



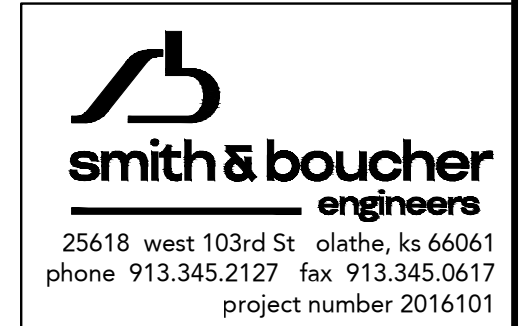
Area Name	Illuminance				
	Average	Max	Minimum	Avg/Min	Max/Min
North Egress	3.97	6.20	1.60	2.48	3.88
South Egress	6.15	30.50	1.00	6.15	30.50
Parking	1.93	3.90	0.80	2.41	4.88
Property Line	0.37	1.00	0.00	-	-



CATHEDRAL OF THE IMMACULATE CONCEPTION - EXPANSION
 CATHOLIC DIOCESE OF KANSAS CITY - ST. JOSEPH
 416 W 12TH ST, KANSAS CITY, MO 64105

1	1/31/22	REVISION 1
2	2/28/22	REVISION 2
3	1/16/23	REVISION 3

SFS PROJECT NO: 211082
 ISSUED FOR: DEVELOPMENT PLAN
 ISSUE DATE: 12.22.2021
 © 2021 SFS ARCHITECTURE
PHOTOMETRIC SITE PLAN



ME211P

sfs architecture
 2100 Central St. Suite 311 Kansas City, MO 64108
 (816) 471-1397 (816) 471-8824 www.sfsarch.com