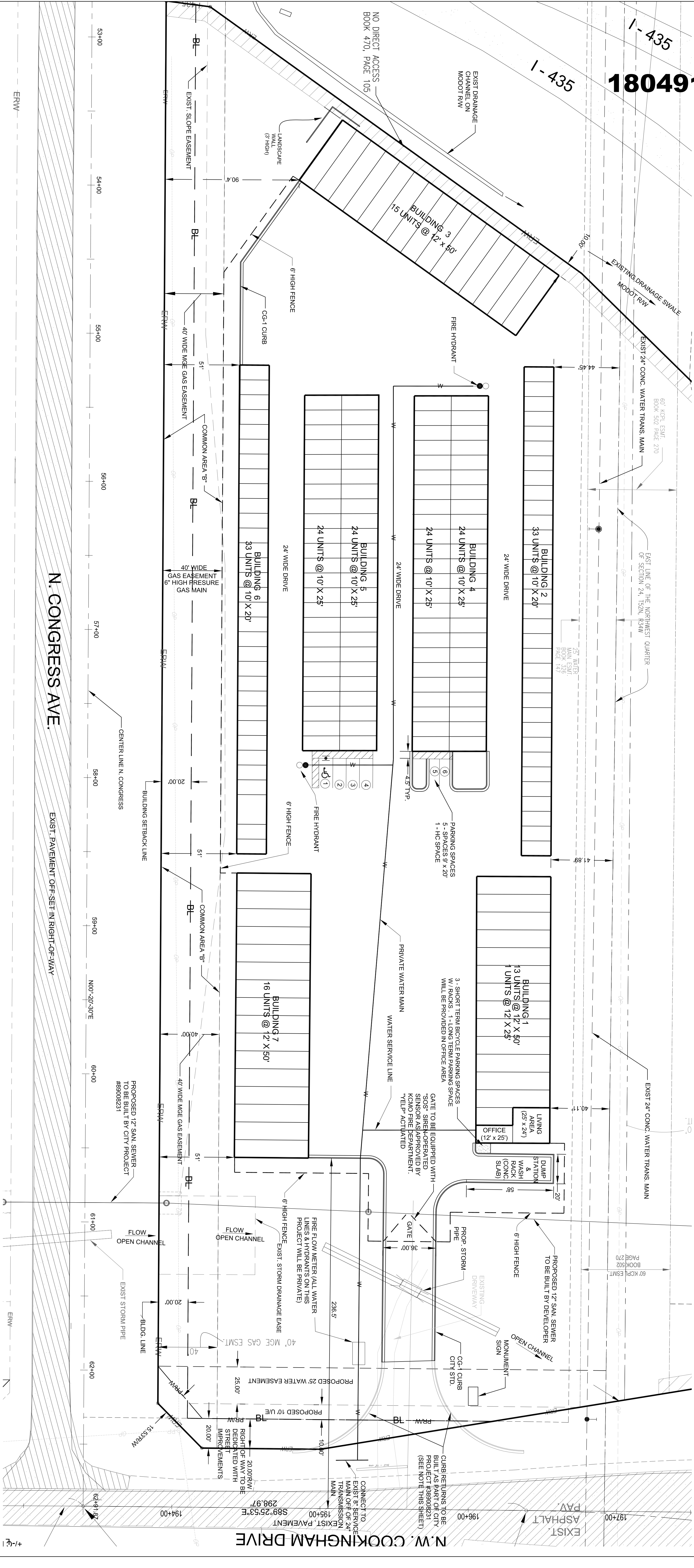


180491



GENERAL NOTES:

ALL IMPROVEMENTS TO N. CONGRESS AVE. AND NW COOKINGHAM DRIVE TO BE BUILT BY CITY PROJECT #89008231. THIS WILL INCLUDE NEW PAVEMENT NORTH CONGRESS, WIDENING NW COOKINGHAM DRIVE ON SOUTH SIDE, INTERSECTION IMPROVEMENTS, CURBS, STREET LIGHTING, WATER MAIN RELOCATION, STORM SEWERS, SANITARY SEWER CROSSING, BIKE LANES, AND SIDEWALKS.

ACCESS TO SITE WILL BE BY A SINGLE DRIVEWAY (36' WIDE) FROM NW COOKINGHAM DRIVE. CENTER LINE OF DRIVEWAY TO BE AT STA. 195+59.76, NW COOKINGHAM DRIVE. ALIGNMENT IS DIRECTLY ACROSS FROM W. FIRST STREET TO FERRELVIEW.

- ERW EXISTING RIGHT-OF-WAY
- PRW PROPOSED RIGHT-OF-WAY
- BL BUILDING SETBACK LINE

BUILDING INFORMATION			
BLDG NO.	NO. OF UNITS	TOTAL SQ. FT.	
1	13	7,800	
LIVING UNIT	1	300	
OFFICE	1	800	
2	33	6,600	
3	15	9,900	
4	48	12,000	
5	48	12,000	
6	33	6,600	
7	16	9,600	
TOTAL	207	65,700	

BUILDING NO. 1 INCLUDES OFFICE SPACE AND LIVING UNIT.

SITE PLAN

DEVELOPER/LANDOWNER

CE-SNO-O, L.L.C.
1317 MAIN STREET
PARKVILLE, MISSOURI 64152
Tel: 816-419-5172

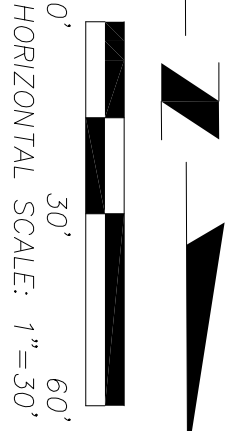
CONSULTANTS

DESIGN ENERGY GROUP
1317 MAIN STREET
PARKVILLE, MISSOURI 64152
Tel: 816-419-5172

Landscaping Architect:
9620 Wedel Street
Overland Park, KS 66207
Tel: 816-682-3188

SUNRISE
ENGINEERING, INC.

Consulting Engineers
9915 Rosewood Lane
Overland Park, KS 66207
Tel: 816-682-3188
Fax: 913-649-8443
Missouri State Certificate of Authority
Engineering #2005022185



HORIZONTAL SCALE: 1"=30'

ISSUED: 3-15-18