

**Docket #5**

**CD-CPC-2023-00142**

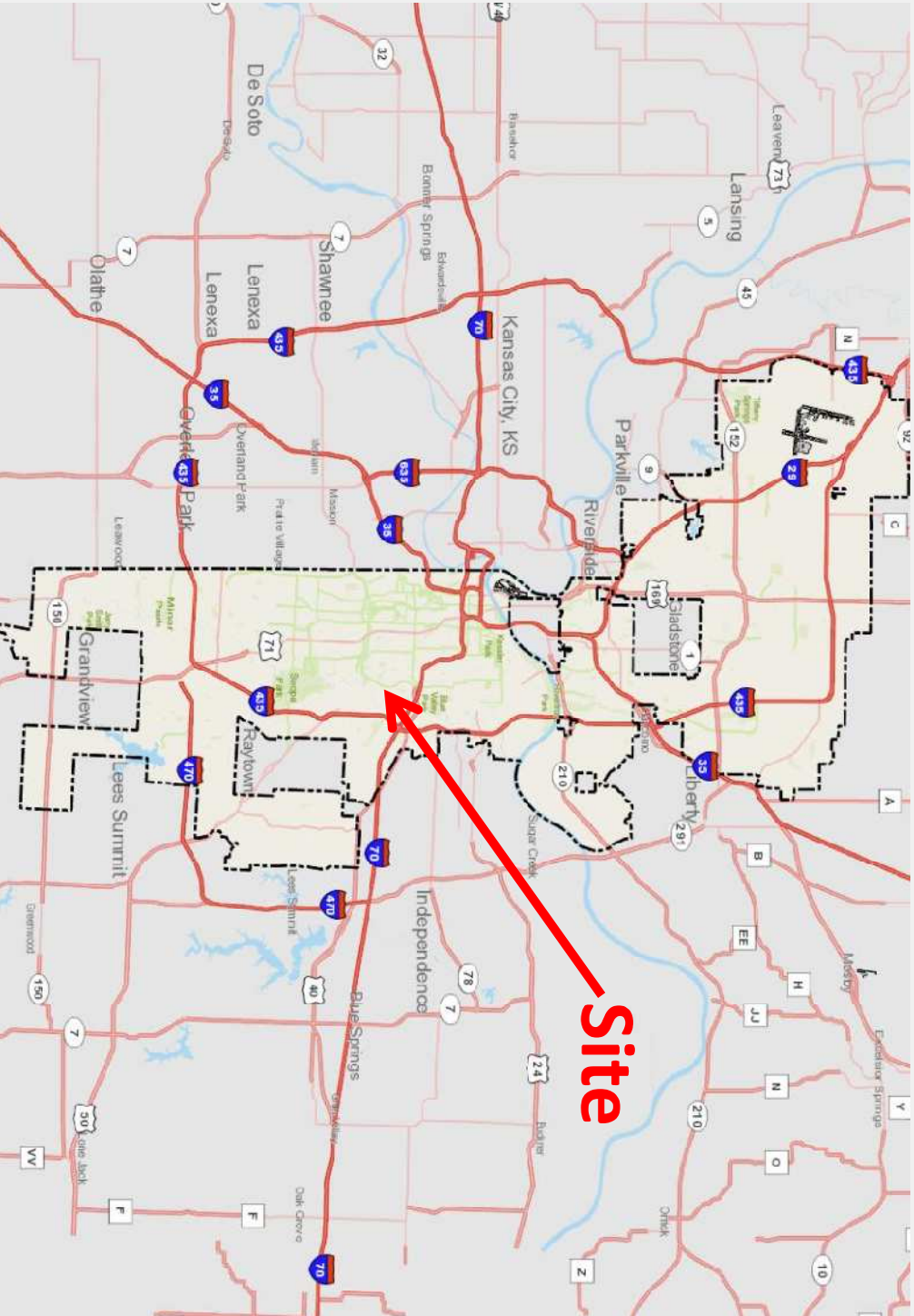
**Rezoning without Plan**

3500 Leads Trafficway Rezoning  
3500 Leads Trafficway

**10-17-2023**

City Plan Commission







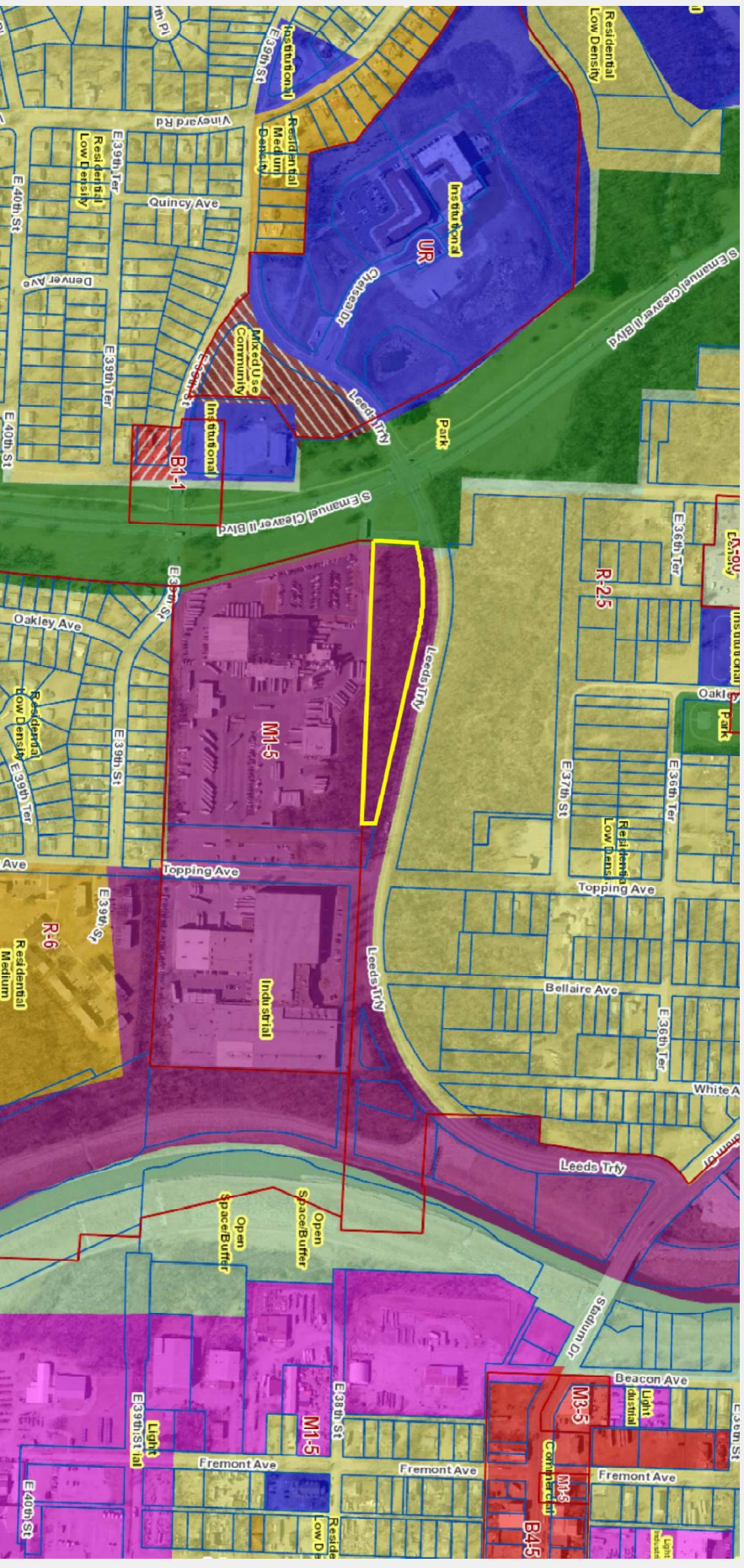


**View looking east from Emanuel Cleaver II Boulevard**



**View looking south from Leeds Trafficway**

- Heart of the City Area Plan
- Recommends Industrial
- Rezoning ~2.6 acres from R-2.5 to M1-5



# Staff Recommendation

**Case No. CD-CPC-2023-00142**

Rezoning without Plan

- **Approval without Conditions**