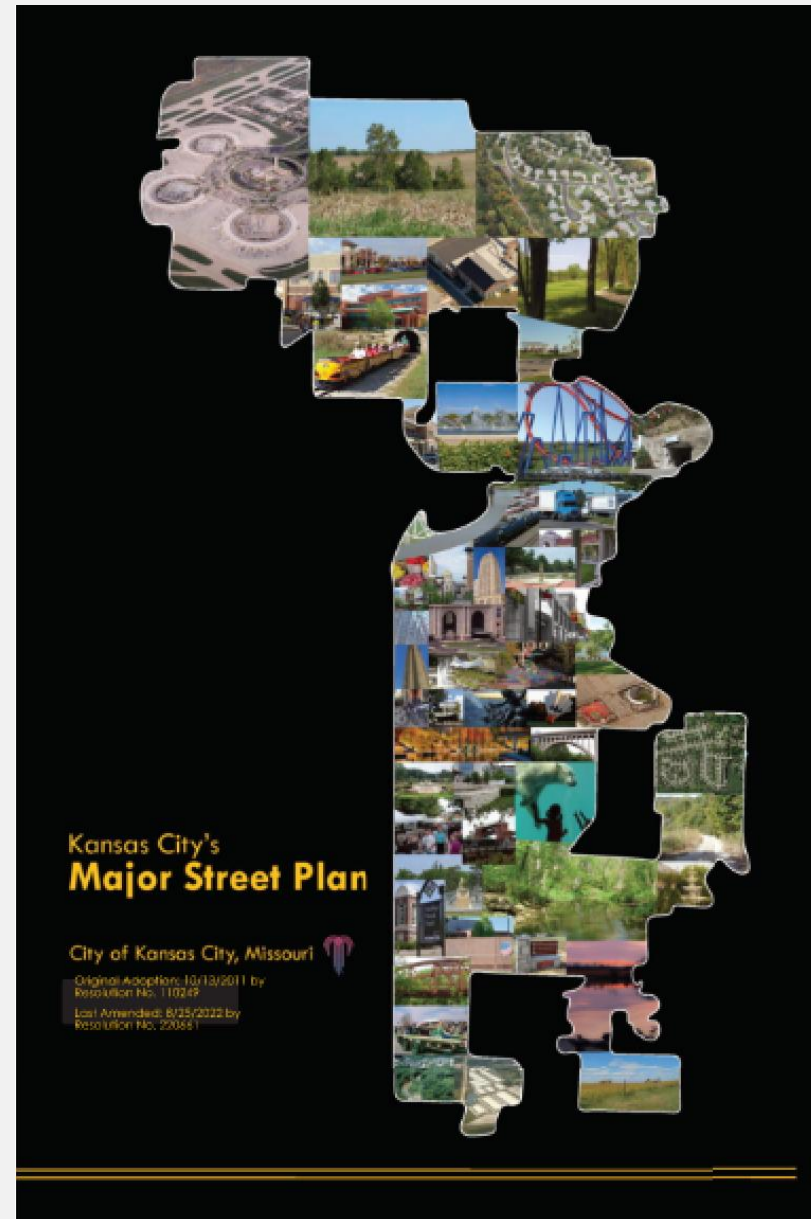


Major Street Plan Amendment

February 18, 2026

City Plan Commission



Development Team:
Selina Zapata Bur, PWD
Regan Tokos, PWD

- Olofu – Intro and background**
 - What is the MSP? CPC Authority, How is it used?**
 - Historical background of how we got here, spot changes!**
- PWD – 2026 Update to MSP**
 - Highlight Public Engagement**
 - What this updated does 1, 2, 3....**
- Olofu – Recap and staff recommendations - ???.**



Kansas City's Major Street Plan

City of Kansas City, Missouri



Original Adoption: 10/13/2011 by
Resolution No. 110249

PURPOSE AND AUTHORITY

The plan established by the city, pursuant to **RSMo 89.480**, showing the general alignment and functional classification of streets, highways and parkways of an ultimate urban arterial network. The purpose of this plan is to guide development of the arterial street network and to identify appropriate street rights-of-way to be secured at the time of subdivision platting. **The plan may be amended, added thereto, or otherwise refined by the subdivision platting process or by the plan commission and city council.**

Review/Update Procedures

Section 66-3 of the City Code of Ordinances describes how changes to the plan may be made: *The plan may be amended, added thereto or otherwise refined by the subdivision platting process or by the Plan Commission and City Council.*

The Major Street Plan should be updated under the following circumstances:

1. When an Area Plan is adopted that has a material effect on the contents of the Major Street Plan (typology change, street added/re-designated).
2. When the proposed or constructed alignment of a major street changes materially from the conceptual alignment shown in the Major Street Plan.
3. When subdivision platting or other development approvals/plans dictate a change to the alignment, number of through lanes, typology or designation of a major street.
4. When proposed major land-use changes result in forecasted traffic volume changes of sufficient magnitude to affect lane requirements on major streets or re-designation of a major street.

5. When a major street or highway owned and/or operated by others, but shown on the Plan for informational purposes, undergoes a material change in constructed or planned alignment.
6. When the Parkway and Boulevard system is modified in a way that affects the Major Street Plan.
7. When major regional transit (on-street or fixed guideway) system changes are planned or implemented.
8. When parks are added to, or removed from, the City's Park System.
9. When City limits change.
10. When other updates are warranted as determined by the City Plan Commission and/or City Council.

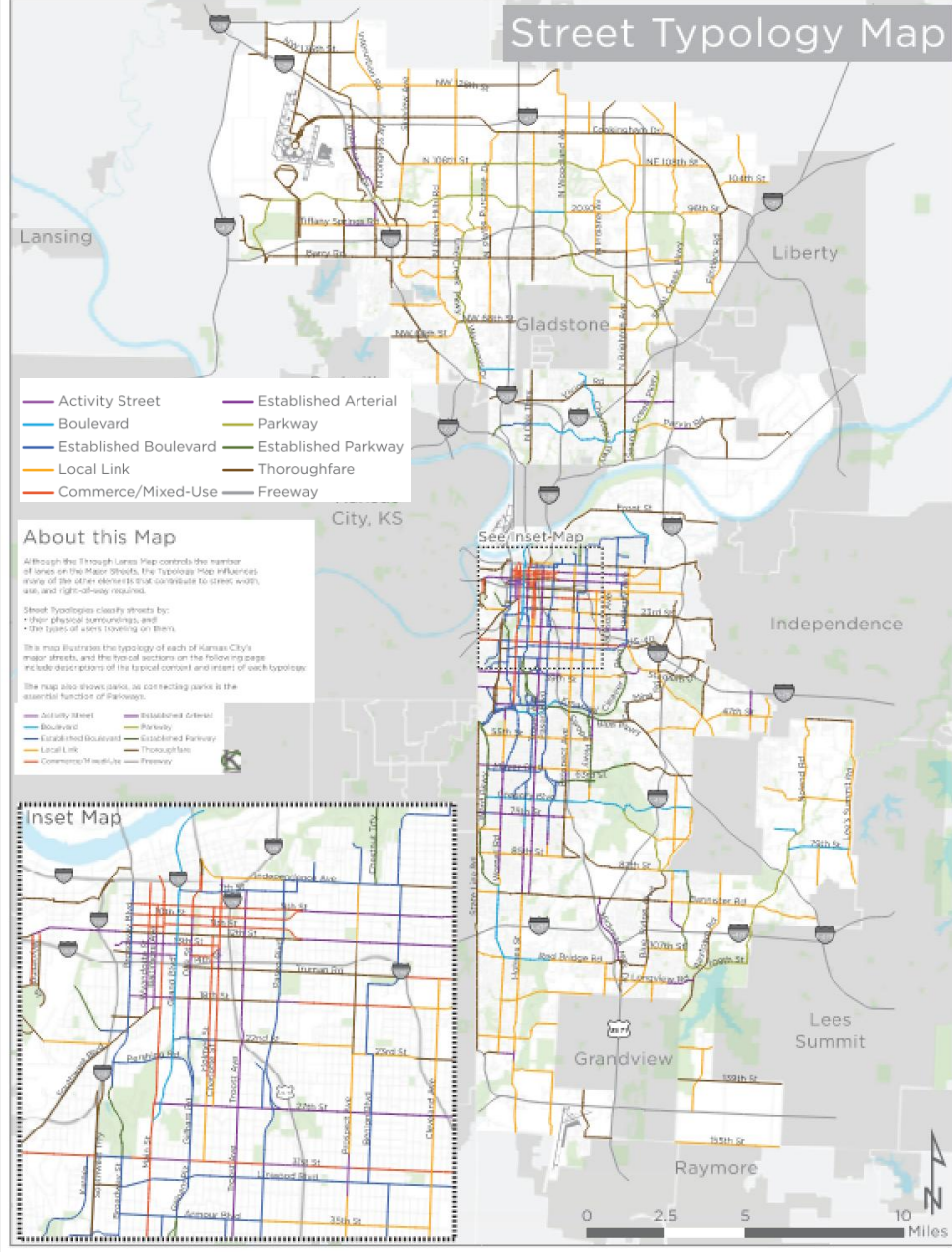
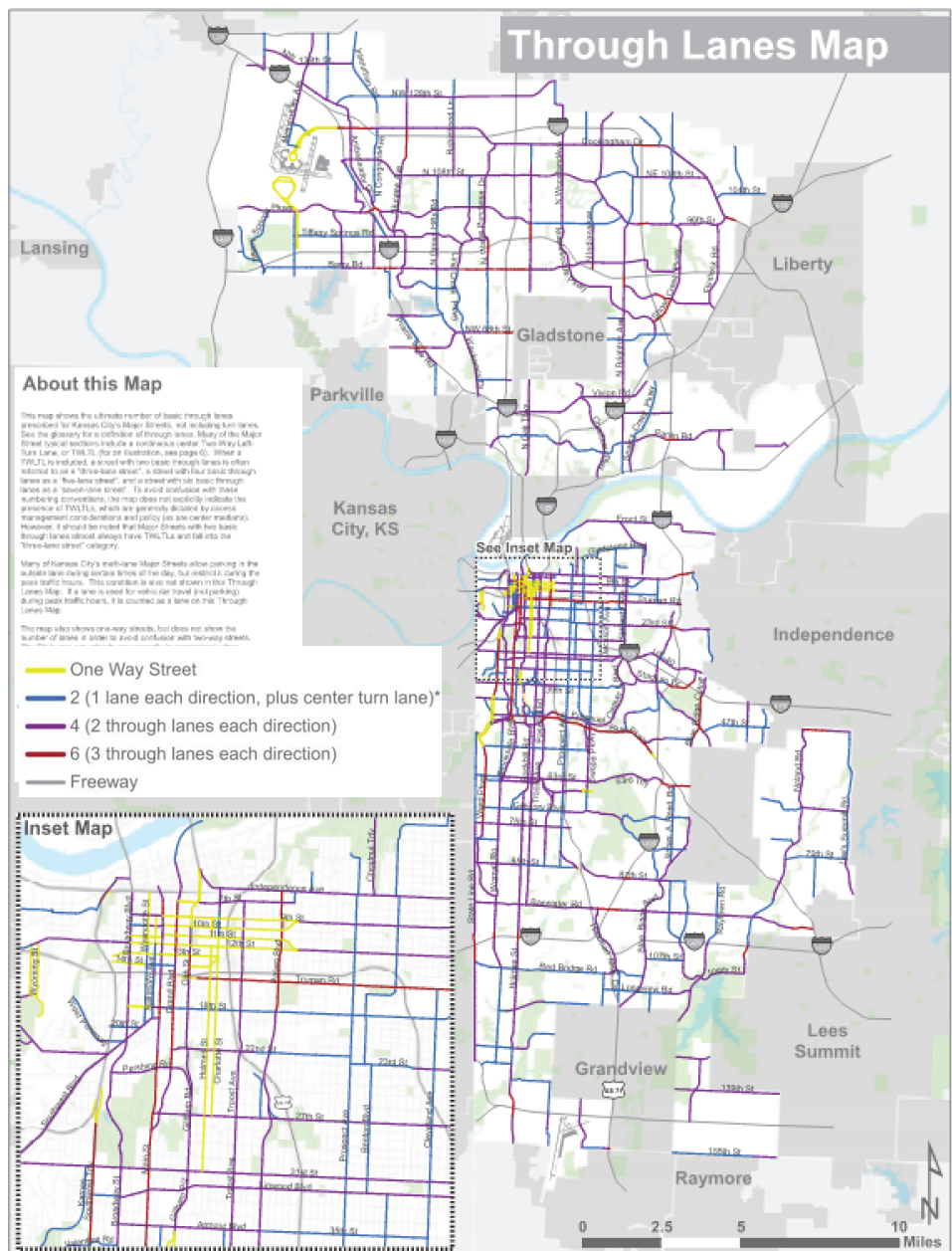
Major comprehensive updates should be conducted at least once every 10 years in conjunction with transportation model or Comprehensive Plan updates. At these times, it is appropriate for the City to examine its buildout land-use assumptions, and its near- and long-term multi-modal transportation needs. Public and stakeholder input should be sought in conjunction with such comprehensive updates.

■ Timeline for Major Street Plan Update Approval.

- **December 4, 2024 – Introduction/ information. CPC continued.**
 - **A. Review, amendment process/ procedure and approval criteria.**
 - **B. MSP Update & Street Design Guide**
- ~~January 15, 2024 – Present draft ordinance language to CPC for review.~~
- ~~February 2024 – CPC for review and recommendation.~~
- **Spring of 2025 2026 – Move forward with Major Street Plan amendment (March and April in line with PWD).**

Case No CD-CPC-2025-00152 - Amending Chapter 88, the Zoning and Development Code, by enacting a new section 88-559 – Major Street Plan to outline the process, procedure and establishing criteria for amending the major street plan.

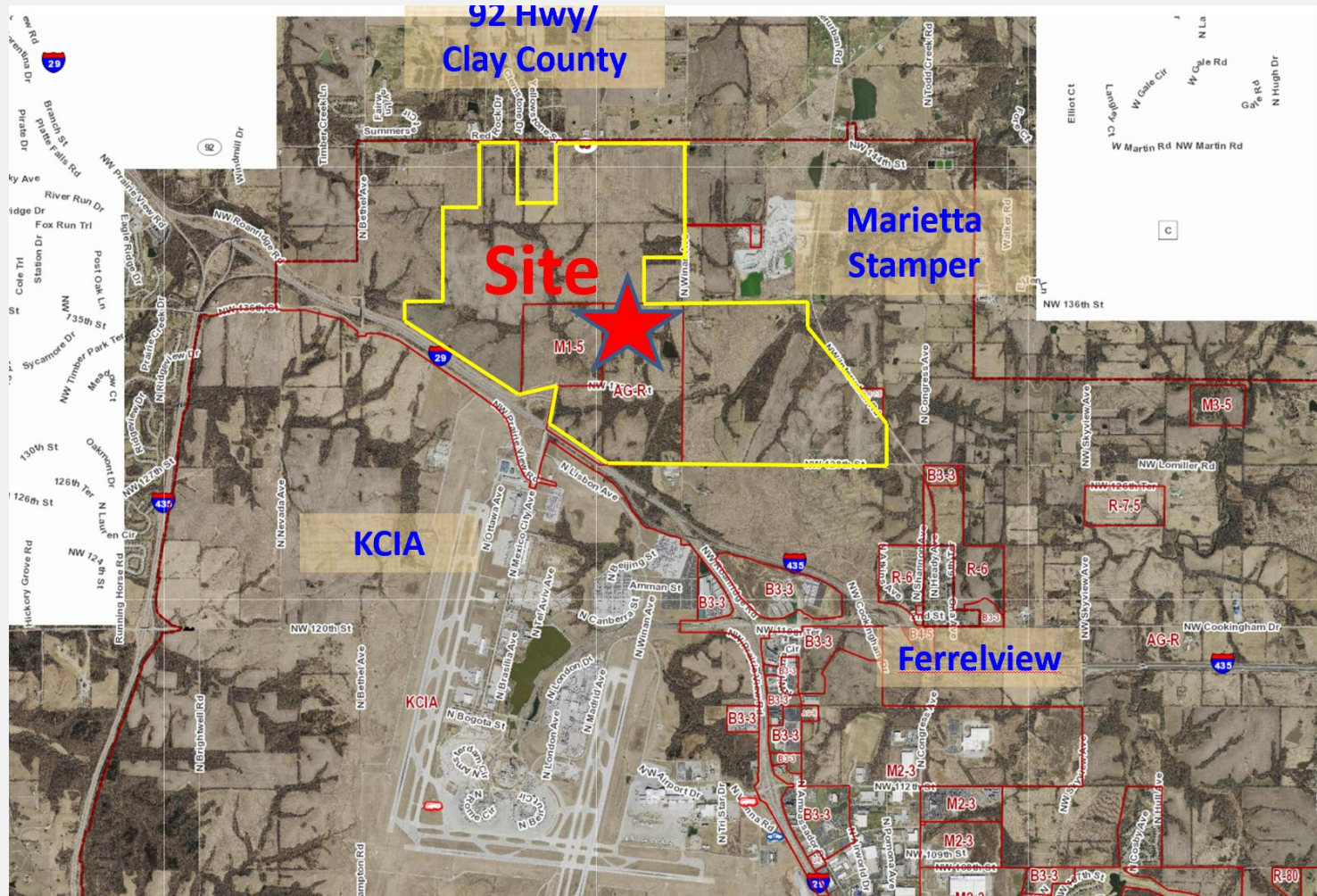
DISMISSED BY CPC on January 21, 2026.



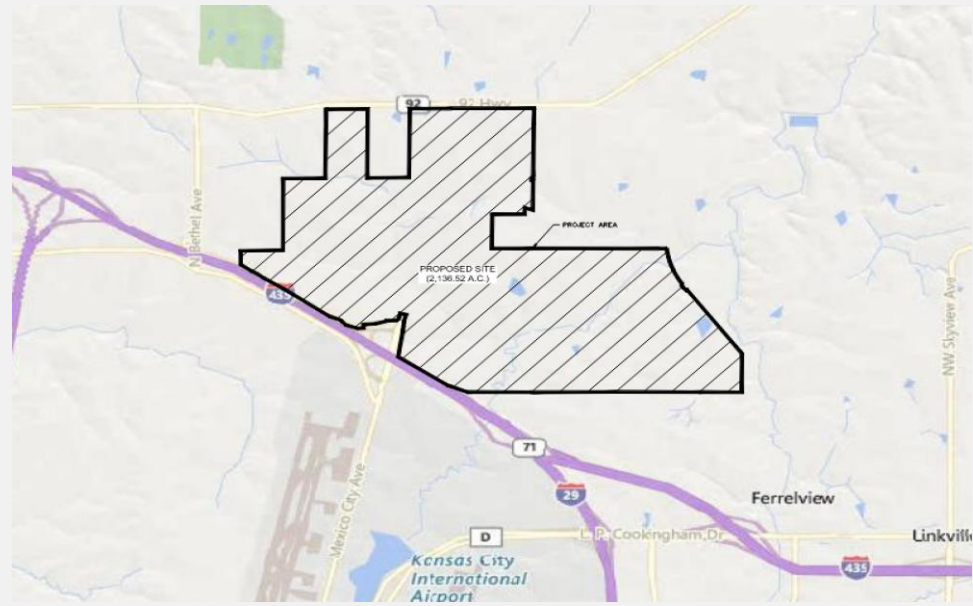
Map © 2014 by the City of Kansas City, Missouri. All rights reserved. Kansas City, Missouri, 2014. 10/14/14

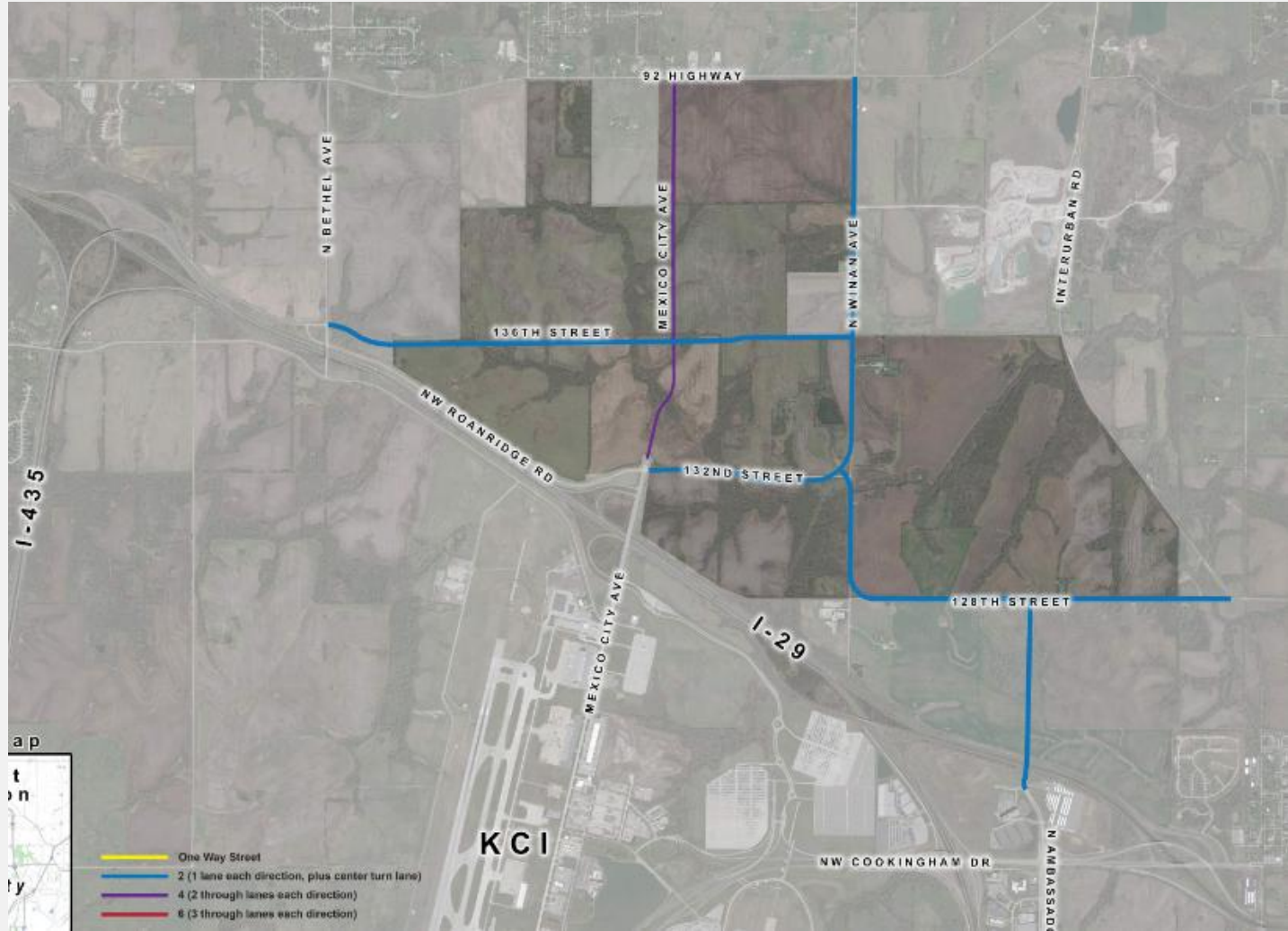
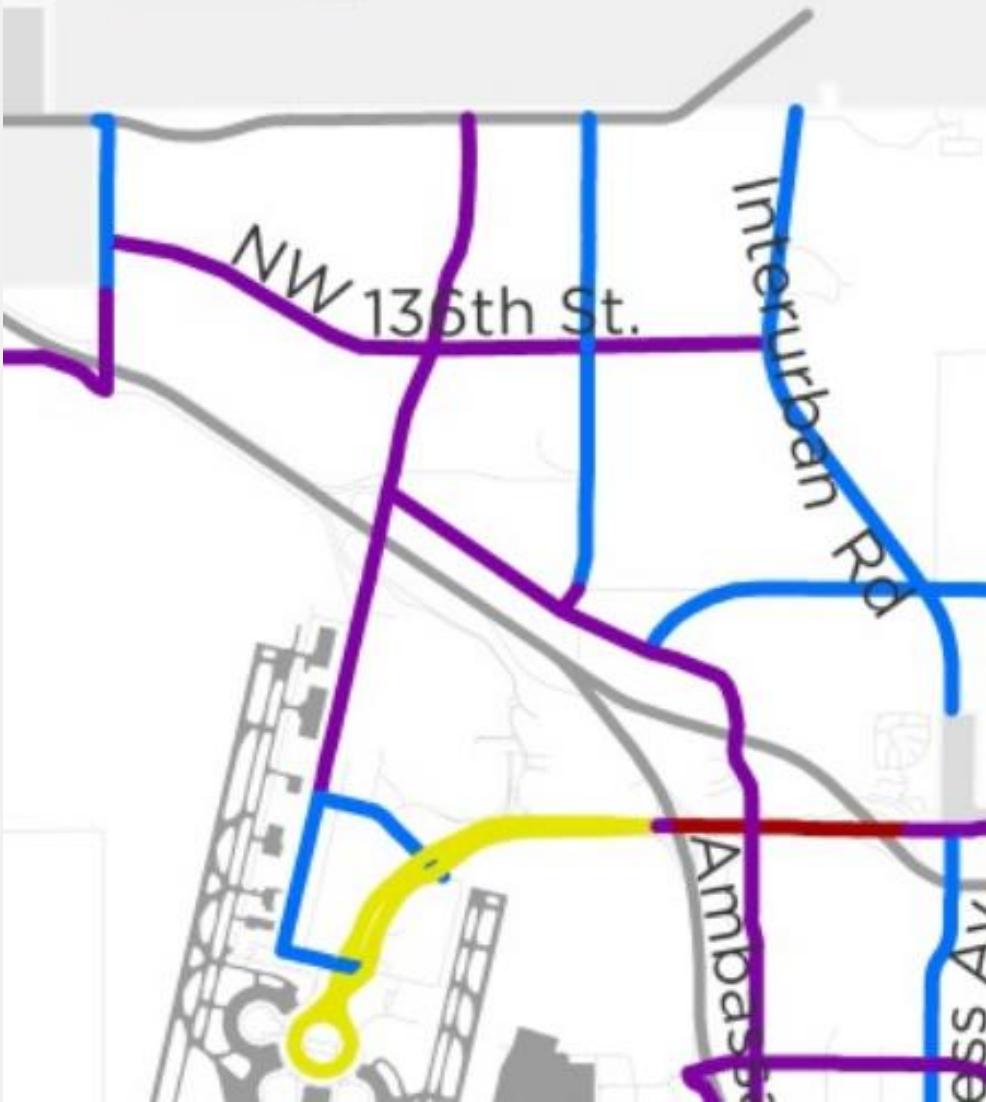
○ How is it used?

- The purpose of the MSP is to guide development of the arterial street network and to identify appropriate street rights-of-way to be secured at the time of subdivision platting.
- The CPC Reviews:
 - Preliminary plats (Development Plans, SUP, MPD, UR, Project Plans)
 - Reviewed by PWD, and corrections and conditions are recommended based on the MSP and the TIS (if necessary).
 - Example – Major arterial – Dedicate required R/W and pay impact fee, based on TIS.
 - OR Local Links/ Collector Streets - Dedicate required R/W and half street improvements, based on TIS.



KCI-29 Logistic Park – 2022
20k acres, 20M sq. ft., 32 Lots





Selina Zapata Bur, PWD

Regan Tokos, PWD

STAFF RECOMMENDATION:

**Approval the Major Street Plan update
and the companion Street Design Guide.**

THE END

