


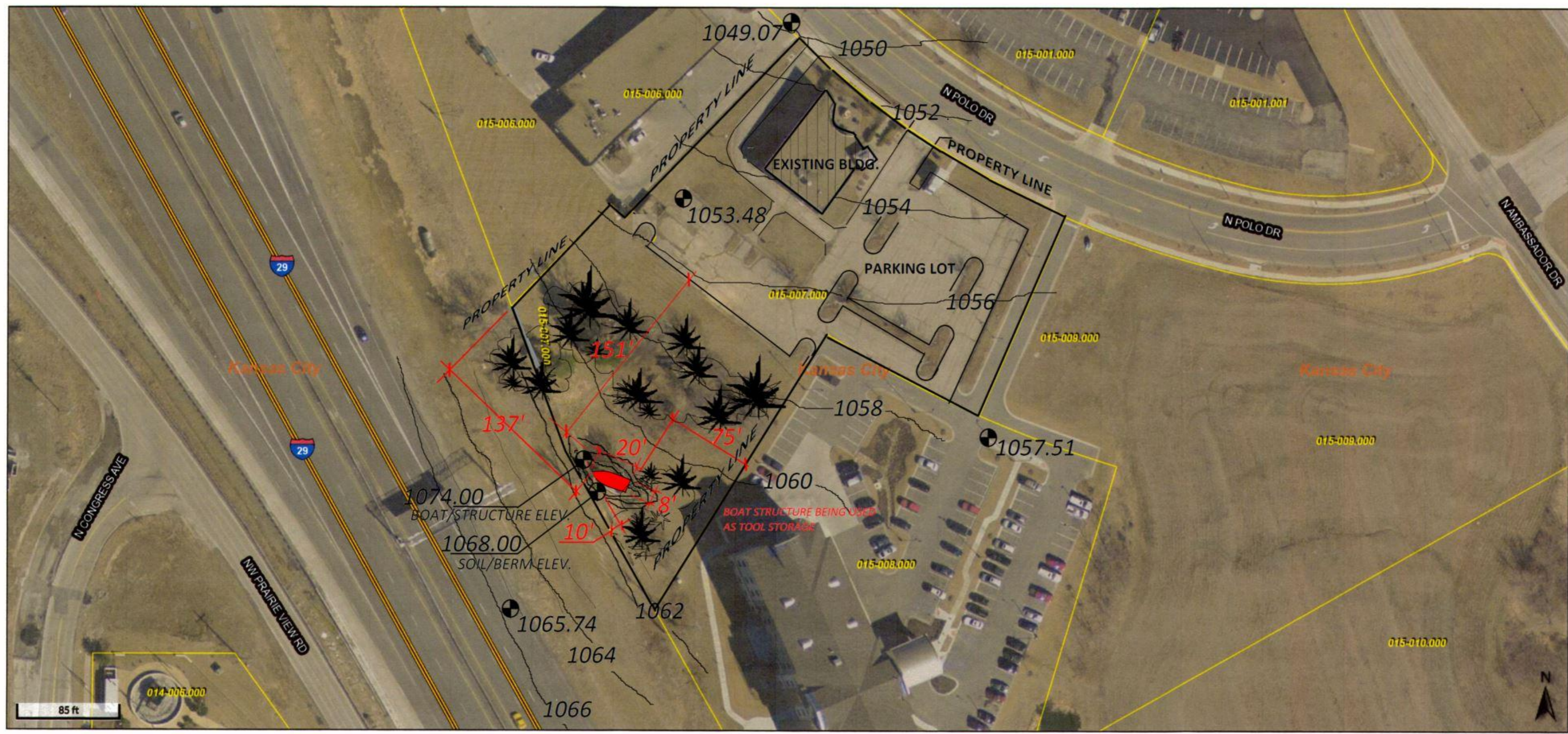


**PST ENGINEERING**  
 Frank A. Comer, PE  
 Professional Engineer  
 Bernard A. Reams, CPBD CPE  
 Certified Professional Building Designer  
 8141 N. Oak Trafficway - Suite D  
 Kansas City, Missouri 64118  
 816-468-1200  
 breams@pstk.com  
 913-433-4505

MEMBER



**AIBD**  
 AMERICAN INSTITUTE of  
 BUILDING DESIGN



Overview



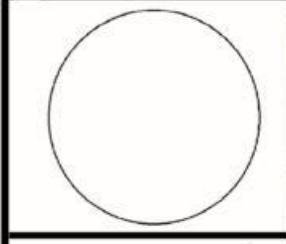
Legend

- City Limits (Lines)
- Parcels Current
- Roads**
- Interstate
- US Route
- State Highway
- County Highway
- County Boundary

**THE REEF RESTAURANT**  
**9600 POLO DR.**  
**KANSAS CITY, MISSOURI**

Project No: #12-120

No	Description	Date



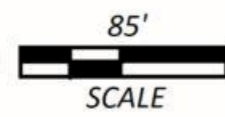
**SHEET**  
**S-1**

Date created: 11/7/2017  
 Last Data Uploaded: 11/7/2017 2:59:30 AM

Developed by  
**Schneider** The Schneider Corporation

ELEVATIONS & DIMENSIONS SHOWN ARE NOT TO BE CONSTRUED AS A TRUE TOPOGRAPHIC, LEGAL OR FINAL BENCH LEVELING SURVEY. DIMENSIONS & ELEVATIONS ARE BASED ON FIELD MEASUREMENTS ONLY. ACTUAL, TRUE MEASUREMENTS & ELEVATIONS SHOULD BE CONDUCTED BY A REGISTERED LAND SURVEYOR IN THE STATE OF MISSOURI.

**SITE PLAN**



**THE REEF RESTAURANT**  
**9600 POLO DR.**  
**KANSAS CITY, MISSOURI**