

RECORDER'S CERTIFICATION  
JACKSON COUNTY, MISSOURI

04/15/2011 03:09:39 PM

INSTRUMENT TYPE: PLAT FEE: \$116.00 3 Pages  
NON-STANDARD FEE: EXEMPT



INSTRUMENT NUMBER/BOOK & PAGE:

2011E0035636

Book: 136 Page: 66  
ROBERT T. KELLY, DIRECTOR, RECORDER OF DEEDS

**Jackson County  
Recorder of Deeds  
Exempt Document**

This document has been recorded under exempt status  
pursuant to RSMo 59.310.4.

This certificate has been added to your document  
in compliance with the laws of the  
State of Missouri.



**Robert T. Kelly, Recorder of Deeds**

415 E. 12<sup>th</sup> Street, Room 104  
Kansas City, MO 64106

308 W. Kansas, Suite 104  
Independence, MO 64050

This page has been recorded as a permanent part of your document. Please do not remove.



DIVISION OF FINANCE  
COLLECTION DEPARTMENT

JACKSON COUNTY COURTHOUSE  
415 EAST 12TH STREET (FIRST FLOOR)  
KANSAS CITY, MISSOURI 64108

TAXPAYER SERVICES (816) 881-3232  
BUSINESS TAXES (816) 881-3188

TAX CERTIFICATE FOR PLAT

INSTRUCTIONS TO TAXPAYER

1. Have Part I of this Tax Certificate completed by the Mapping Section of the Assessment Department.
2. Take to Taxpayer Services at either the Kansas City or Independence Courthouse. They will complete Parts II and III.
3. You cannot record your plat until these steps are completed.

PART I: TO BE COMPLETED BY ASSESSMENT DEPARTMENT  
(Use one form for each parcel number)

Legal Description: (RTS OR SUB) \_\_\_\_\_  
\_\_\_\_\_  
\_\_\_\_\_  
\_\_\_\_\_

Current County Parcel/ID # 30-210-05-02

BY Andrea Kelley DATE 4/11/11

10 '09 '08

PART II: TO BE COMPLETED BY COLLECTION DEPARTMENT

(Return to Mapping Section, Assessment Department if unable to follow payment history back three years. Attach documentation if paid. Attach bill if taxes due).

YEAR	AMOUNT DUE	DATE PAID	VERIFIED BY
2010	-0-	12-16-10	<i>[Signature]</i>
2009	-0-	12-28-09	<i>[Signature]</i>
2008	-0-	5-1-09	<i>[Signature]</i>

PART III: TO BE COMPLETED BY AUTHORIZED COLLECTION DEPARTMENT SUPERVISOR

(This is to certify, that according to the records of the Collection Department, the State, County and School Taxes for Real Property have been paid in full for 100908 and all prior years for the above described property.)

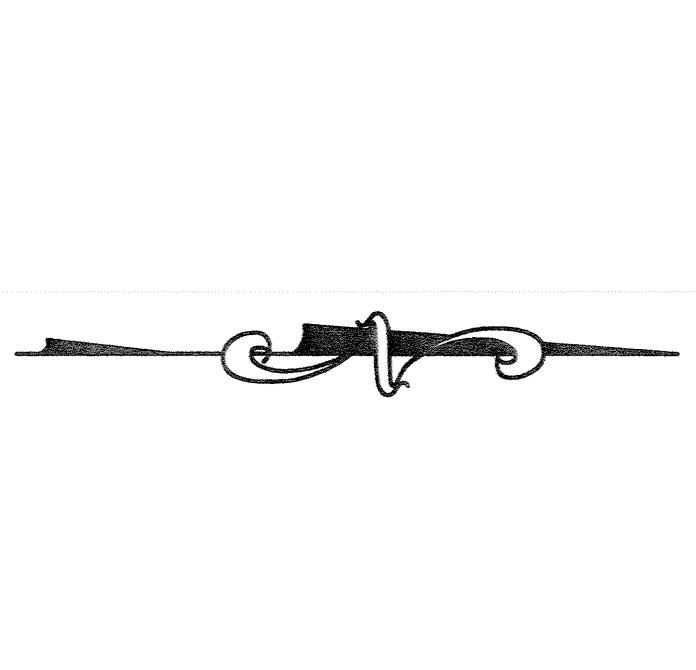
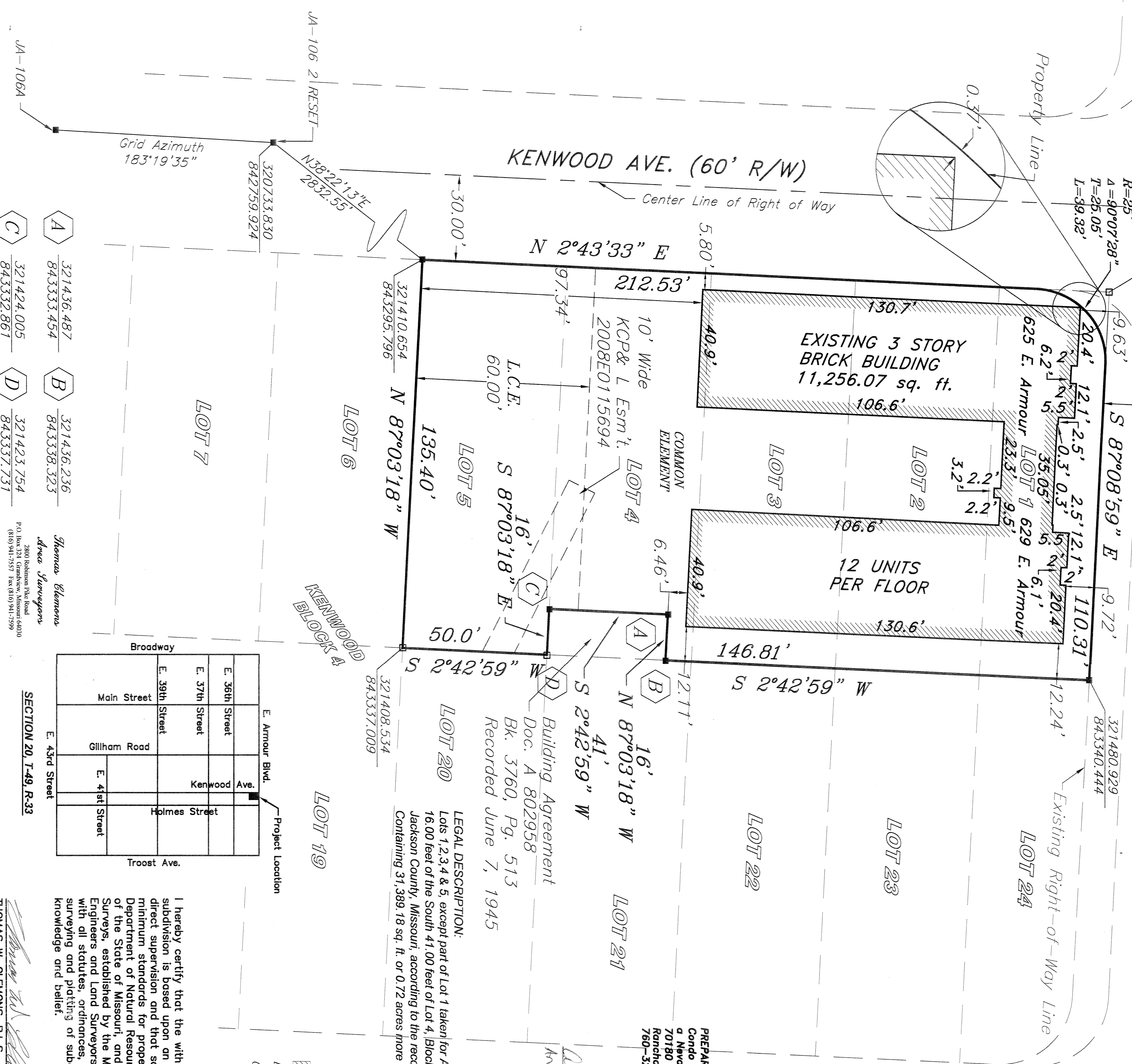
4-15-11 *[Signature]*  
DATE SUPERVISOR

2011E0035636-1

Filed for record in the City of  
 At 3:00 o'clock P.M. on the 20th day of  
 February, 2011  
 Instrument Number 2011E0035636  
 By *Thomas W. Clemons*  
 Director Recorder of Deeds  
 Deputy  
 Recorder's Fee \$ 843399.240

# GABRIEL CONDOMINIUM

**E. ARMOUR BLVD. (100' R/W)** A Final Condominium Plat in The Northwest Quarter, Northeast Quarter, Section 20, Township 49 North, Range 33 West, Kansas City, Jackson County, Missouri.



PREPARED FOR/ DEVELOPER:  
 Condo Couture, Limited Partnership,  
 a Nevada Limited Partnership,  
 70190 Chappel Road  
 Rancho Mirage, CA 92270  
 760-324-1151

*Andrea Kelley GIS 4/11/11*  
*Andrea Kelley GIS*

**LEGAL DESCRIPTION:**  
 Lots 1, 2, 3, 4 & 5, except part of Lot 1 taken for Armour Boulevard and except the East 16.00 feet of the South 41.00 feet of Lot 4, Block 4, KENWOOD, a subdivision in Kansas City, Jackson County, Missouri, according to the recorded plat thereof.  
 Containing 31,389.18 sq. ft. or 0.72 acres more or less.

- LEGEND**
- EXISTING IRON ROD
  - SET 1/2" IRON ROD & CAP
  - ▨ EDGE OF BUILDING
  - ▨ L.C.E. LIMITED COMMON ELEMENTS (SEE NOTE 4)
  - ▨ C.E. COMMON ELEMENT (SEE NOTE 4)

**SECTION 20, T-49, R-33**

Broadway	E. 39th Street	E. Armour Blvd.	Kenwood Ave.
	E. 36th Street		
Main Street	E. 37th Street	Holmes Street	Troost Ave.
	Gillham Road		
E. 43rd Street	E. 41st Street		

I hereby certify that the within Plat of "GABRIEL CONDOMINIUM" subdivision is based upon an actual survey made by me or under my direct supervision and that said survey meets or exceeds the current minimum standards for property boundary surveys as established by the Department of Natural Resources, Division of Geology and Land Survey, of the State of Missouri, and Missouri Standards for Property Boundary Surveys, established by the Missouri Board for Architects, Professional Engineers and Land Surveyors. I further certify that I have complied with all statutes, ordinances, and regulations governing the practice of surveying and platting of subdivisions to the best of my professional knowledge and belief.

THOMAS W. CLEMONS, P.L.S., 1958

**STREET DEDICATION:** The streets shown on this plat and not heretofore dedicated to public use as thoroughfares, are hereby so dedicated.

**PLAT DEDICATION:** The undersigned owners of the herein described tract of land have caused the same to be subdivided in the manner shown on the accompanying plat, which subdivision shall be hereafter known as **GABRIEL CONDOMINIUM**.

**RIGHT OF EGRESS:** The right of entrance and egress in travel along any street or drive within the boundaries of the property is hereby granted to Kansas City, Missouri, for the purpose of fire and police protection, maintenance of water mains, sanitary and storm sewer lines, collection of garbage and refuse and to the United States Postal Service for the delivery of mail, provided, however, such right of ingress and egress does not include any obligation to contribute for any damage to any private street or drive by virtue of the exercise of the rights stated herein and specifically, neither Kansas City, Missouri nor the U.S. Postal Service shall incur any liability by virtue of the exercise of such rights.

**MONEY IN LIEU OF PARKLAND:** The Developer elects to pay the City of Kansas City, Missouri, a sum of \$3,993,111 in lieu of required parkland dedication for 36 Residential Condominium units pursuant to Section 66-128 Code of Ordinances of the City of Kansas City, Missouri.

**BUILDING LINES:** Building lines or setback lines are hereby established, as shown on the accompanying plat, and no building or portion thereof shall be built between this line and the lot line nearest thereto.

**IN TESTIMONY WHEREOF,** Condo Couture, Limited Partnership, a Nevada limited partnership company, have caused these presents to be signed by its General Partner this 20th day of February, 2011.

*Nicole L. Earb* - General Partner

STATE OF CALIFORNIA  
 COUNTY OF KANSAS

On February 22, 2011 before me, MIKE MURRILL, personally appeared Nicole L. Earb, who proved to me on the basis of satisfactory evidence to be the person whose name is subscribed to the within instrument and acknowledged to me that she executed the same in her authorized capacity, and that by her signature on the instrument the person, or the entity upon behalf of which the person acted, executed the instrument. I certify under PENALTY OF PERJURY under the laws of the State of California that the foregoing paragraph is true and correct.

My Commission expires: Nov 01, 2012

Notary Public  
 Print Name: MIKE MURRILL



CITY PLAN COMMISSION

Approved: April 6, 2010

City Engineer - Gregory J. Rokos, P.E.  
 Director - Stephen J. Harris, P.E.

Assistant Secretary - John Eckardt

**COUNCIL:** This is to certify that this plat was submitted to and approved by the City Council of Kansas City, Missouri by Ordinance No. 0223 duly authenticated as passed this 19 day of March, 2010.

*Walter Thompson*  
 City Clerk - Walter Thompson

Major - Mark Fuldholser

**NOTES:**  
 1. This Plat, GABRIEL CONDOMINIUM, is the plat as that term is defined in Section 448.2-109, RSMo., and this GABRIEL CONDOMINIUM (The "Condominium") is subject to the provisions of the Uniform Condominium Act (1986) as adopted by the Revised Statutes of Missouri in Section 448.1-101 Et. Seq. (the "Act") and as provided for in the Declaration of GABRIEL CONDOMINIUM (the "Declaration") recorded concurrently herewith.

2. The boundary lines, dimensions and elevations of each unit (individually, a "Unit" and collectively, "Units") designated on this Plat are the interior unfinished surface of its floors, ceilings and walls, and are more particularly described in the Declaration.  
 3. All Units on this Condominium are subject to Special Declarant Rights as defined in the Act and more specifically set forth in the Declaration.  
 4. Certain portions of this Condominium are Common Element ("Common Element" or "CE") as set forth in the Declaration. Portions of the Common Elements are assigned to individual Units as Limited Common Element ("Limited Common Element" or "LCE") as set forth in the Declaration.  
 5. The owner of each Unit shall own an undivided interest in the Common Elements in accordance with the percentage established in the Declaration.  
 6. The legal description of each Unit described in this Plat, together with its undivided interest in the Common Elements, as established by the Declaration, is by reference to the identifying number of each Unit as set out in this Plat, followed by the words, GABRIEL CONDOMINIUM, a Condominium subdivision in Kansas City, Jackson County, Missouri.

7. This Condominium consists of one (1) building situated on the real estate described in this Plat and such building are comprised of a total of thirty-six (36) Units.  
 8. Any and all public easements supercede any and all LCE. Any Improvements made within LCE which is also located within a public easement may be removed without compensation.  
 9. The Portion of Lot 4 not included in this Plat will be combined with Lot 21 within 30 days of recording this Plat.

This is a Class C Urban Property.  
 Street grades previously established as follows:  
 Kenwood Avenue: May 20, 1898 by Ordinance Number 9777  
 E. Armour Boulevard: May 19, 1905 by Ordinance Number 28728

All bearings and coordinates shown are based on the Missouri State Plane Grid System, NAD-1983, West Zone, using a combined grid factor of 0.9999027. Coordinates are in meters.  
 DIMENSIONS TO BUILDING CORNERS ARE RIGHT ANGLES TO THE PROPERTY LINES.



