



**KANSAS CITY  
MISSOURI**

City Planning and Development

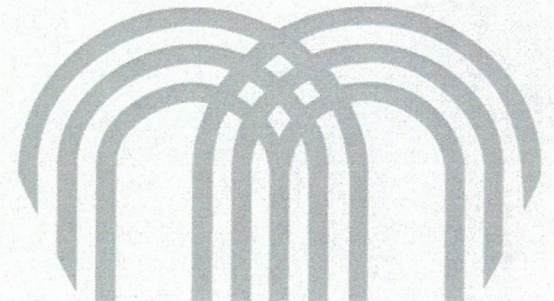
1

# Ordinance 240431

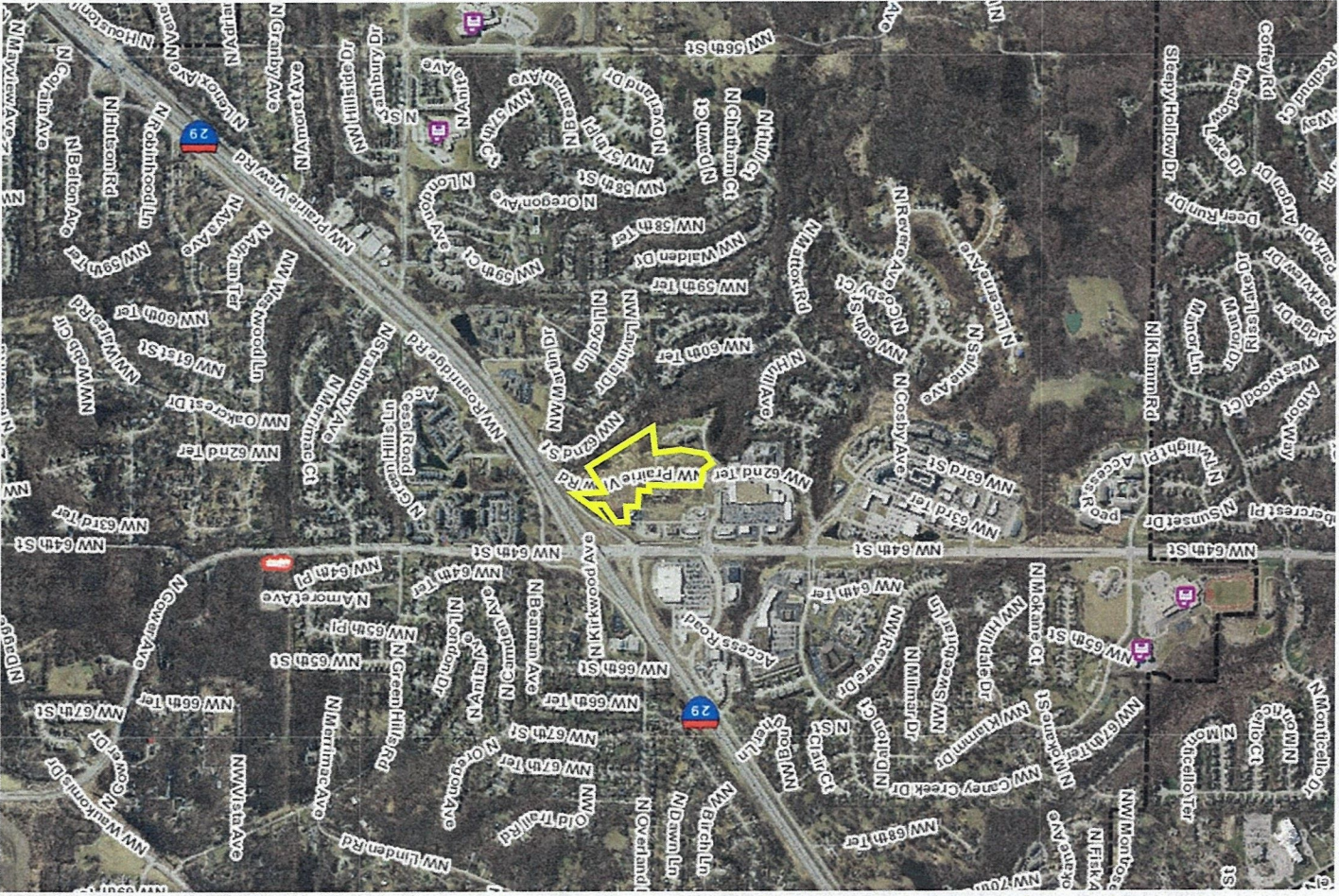
Rezoning: NW Prairieview and N Chatham Rezoning  
CD-CPC-2024-00023

June 4, 2024

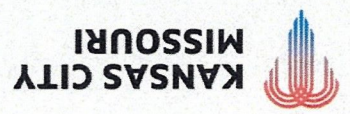
Neighborhood Planning & Development Committee







# Location



## City Planning and Development



# Rezoning

- Applicant is proposing a rezoning from B2-2 and R-2.5 to **B3-3**
- Line Creek Valley Area Plan corresponding Land Use is Mixed Use Community.
- Proposed Zoning District is in line with the Area Plan.
- No development is proposed at this time.

# City Plan Commission Recommendation Ordinance 240431

## Rezoning

Case No. CD-CPC-2024-00023

**Approval**

**NW Prairieview and N Chatham Rezoning**



**KANSAS CITY  
MISSOURI**

City Planning and Development

