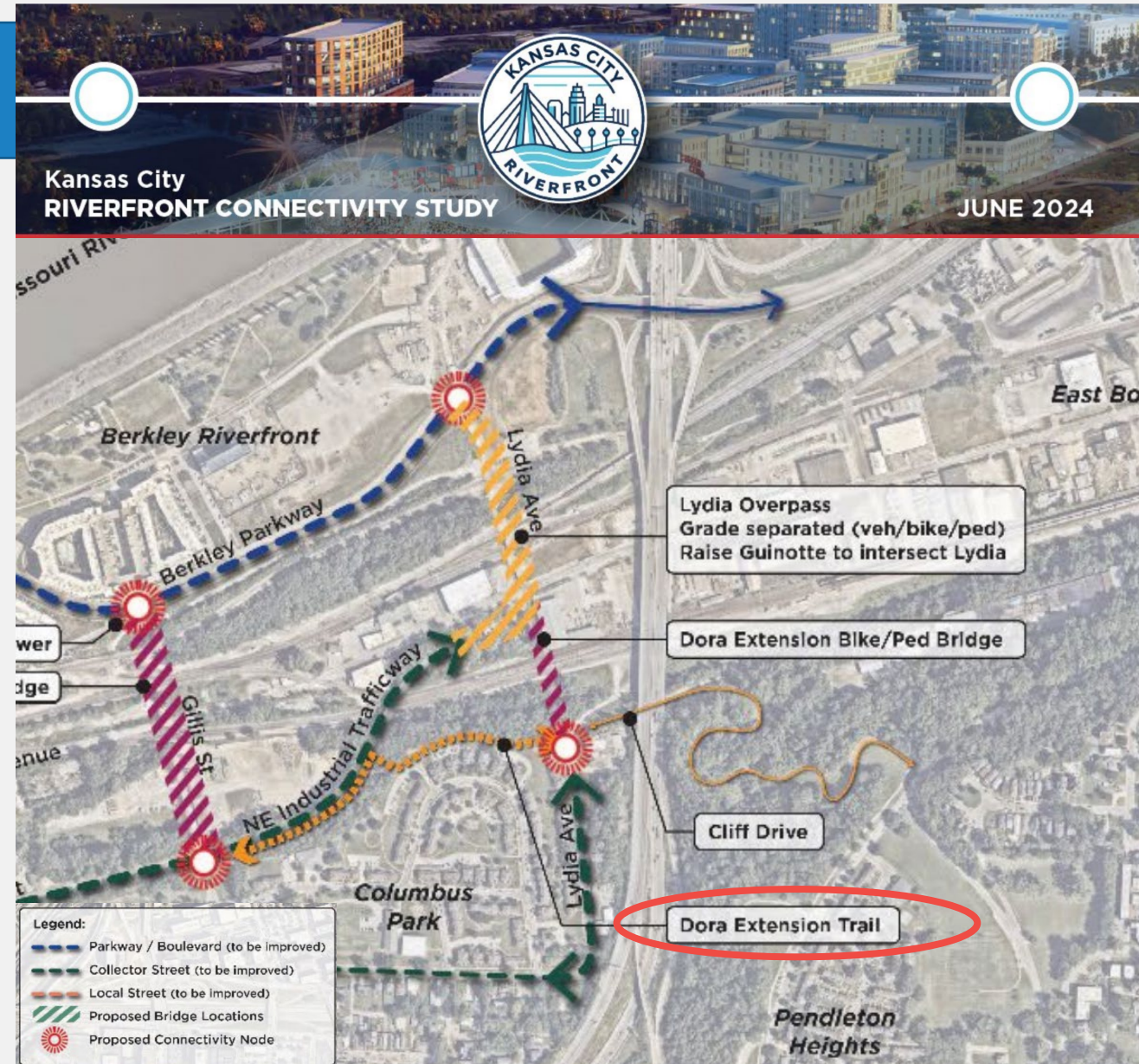




**KANSAS CITY  
MISSOURI**

## Ordinance 260129

Estimating revenue in the amount of \$1,500,000.00 in the Capital Improvements Grant Fund; appropriating that amount to the Cliff Drive Bike/Pedestrian Facility to River Market Connector project; designating requisitioning authority; recognizing the required local grant match; and recognizing this ordinance as having an accelerated effective date

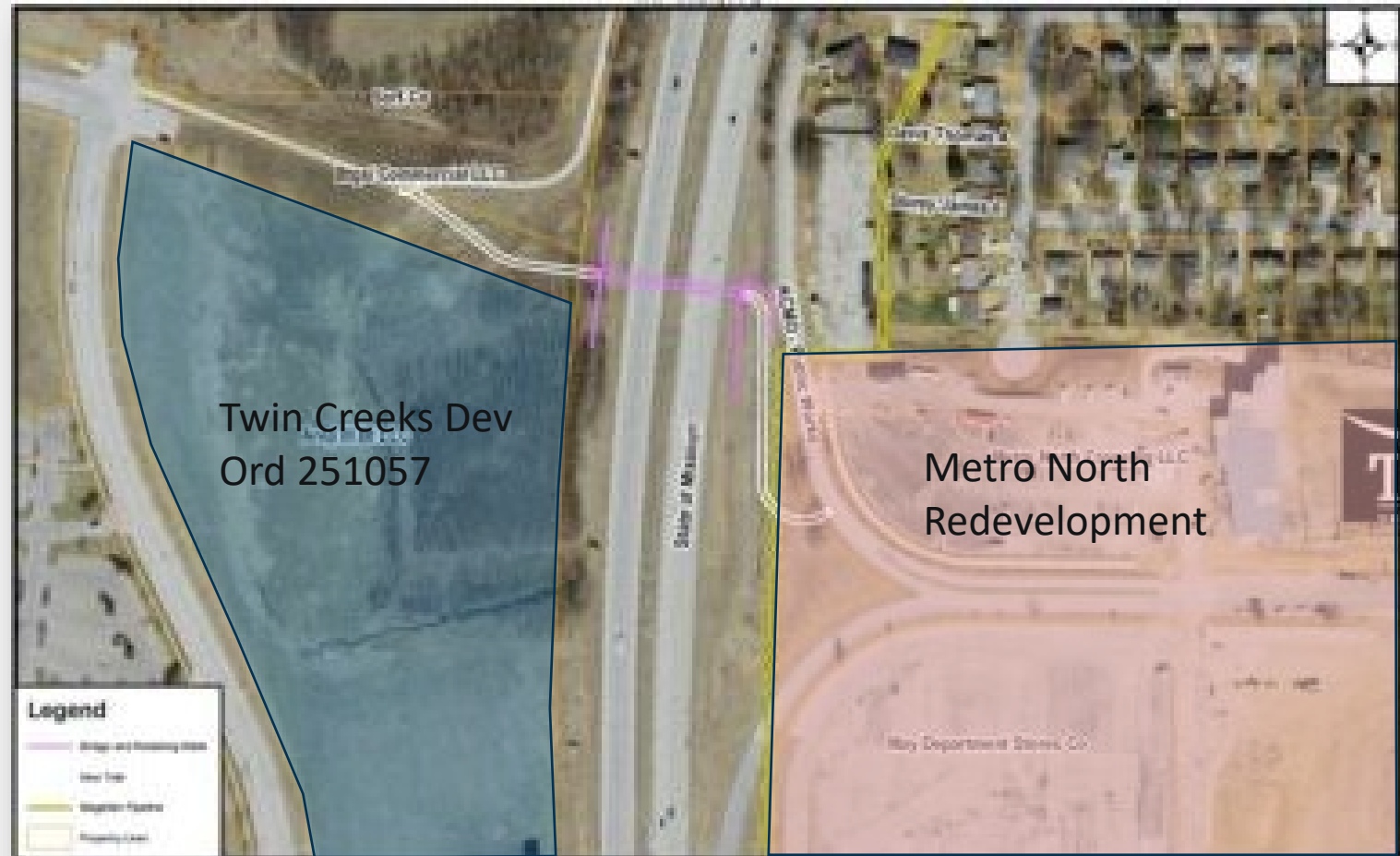


## Ordinance 260129

- Funding Sources (\$1,875,000 total)
  - \$750,000 – Transportation Alternatives Program (TAP) grant
  - \$750,000 – Congestion Mitigation Air Quality (CMAQ) grant
  - \$375,000 – City match from D4 previously appropriated
- Project under design – public meetings will be scheduled
- Continuation of 2024 Planning Sustainable Places (PSP) study for Columbus Park/Berkley Riverfront
- Part of Greenline northern section

## Ordinance 260133

Reducing an appropriation in the amount of \$500,000.00 in the Capital Improvements Fund for the I-35 to Chouteau Dr - Levee Trail project; estimating revenue in the amount of \$3,121,892.00 in the Capital Improvements Grant Fund; appropriating that amount from the Unappropriated Balance of the Capital Improvements Grant Fund to the US 169 and Madison to Metro North Mall Dr - Trail Overpass project; recognizing the required local grant match; and recognizing this ordinance as having an accelerated effective date.



## Ordinance 260133

### US-169 Bike Ped Bridge

- Funding Sources (\$5,145,469 total)
  - MoDOT Cost Share \$1,059,392
  - Transp. Alternatives (TAP) \$1,562,500
  - TAP from Chouteau Trail \$ 500,000 (moved to prevent expiration of funds)
  - City Match (PIAC) \$2,008,577
- Project scheduled to bid in March 2026

### Chouteau Levee Trail (informational only)

- Funding Sources (\$1,953,148)
  - Universal TIF \$1,500,000
  - City funds \$453,148
- Estimated Construction costs \$1,400,000
- Project in design stage