

Docket #10

CD-CPC-2023-00154

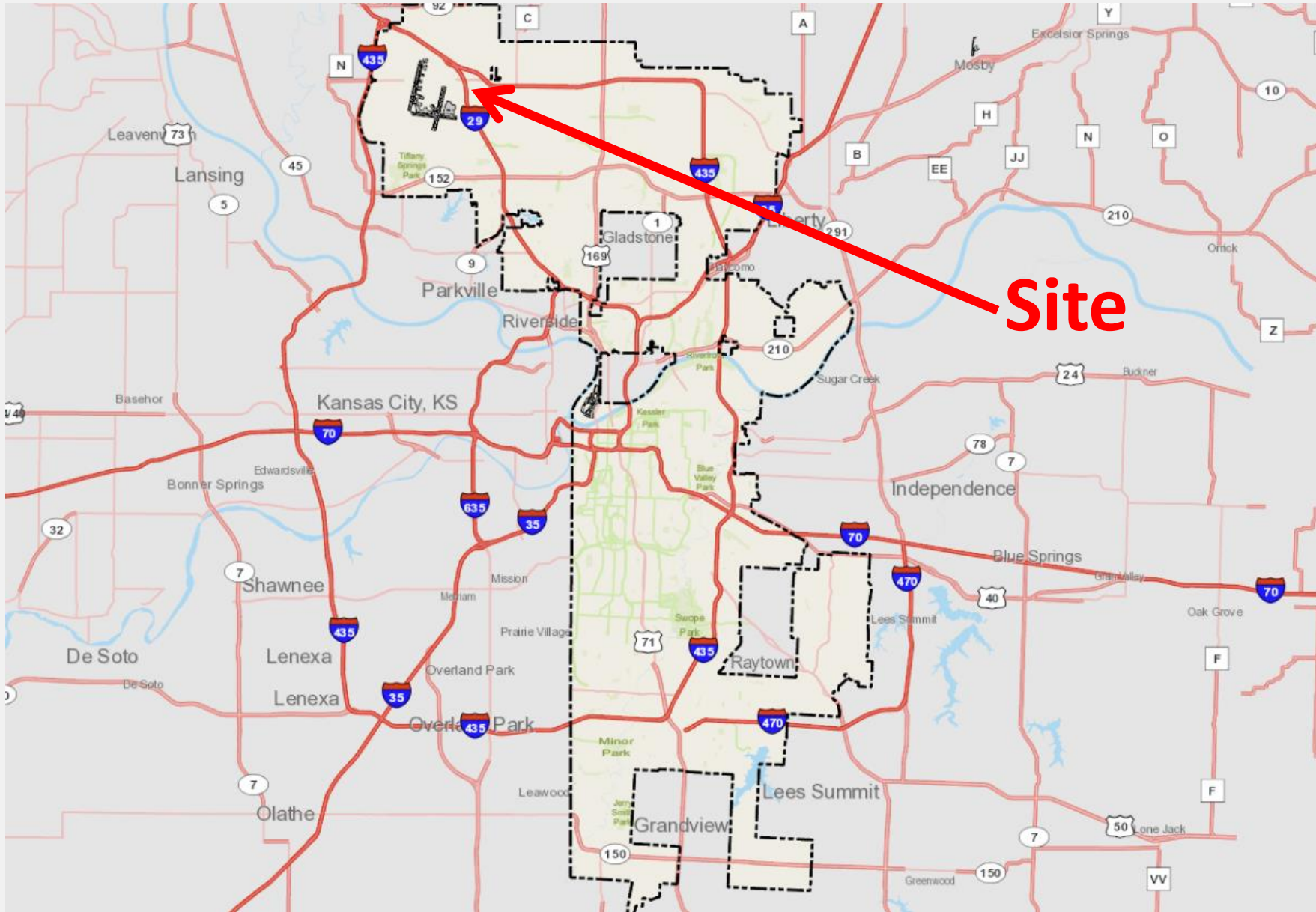
Development Plan – Non-Residential

Hulsing Hotel Addition at KCI
11832 NW Plaza Circle

11-7-2023

City Plan Commission





- ~ 5.1 acres
- B3-3 zoning
- Adjacent to KCI
- Existing Hotel
- 4-story, 100 room addition

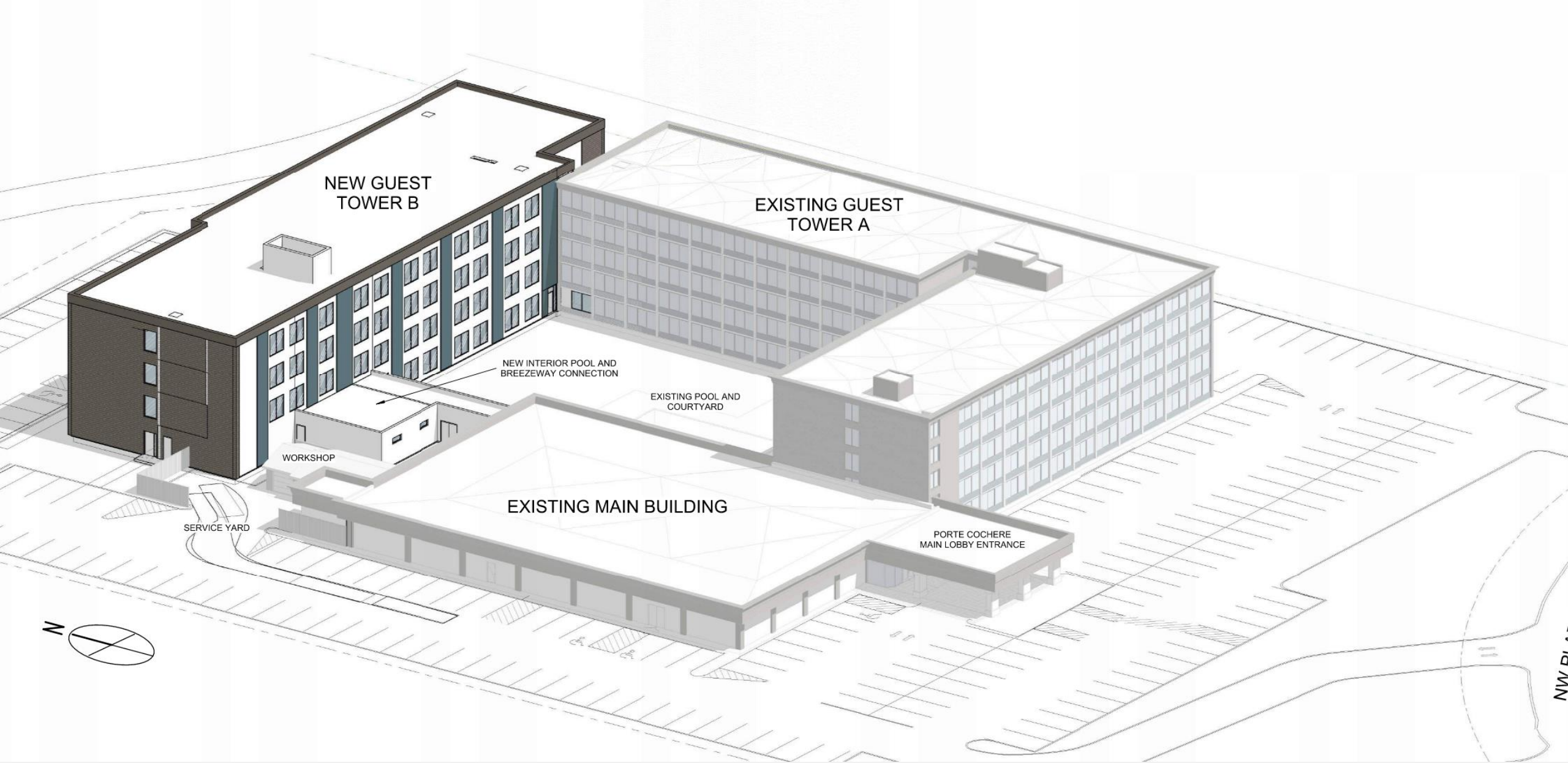


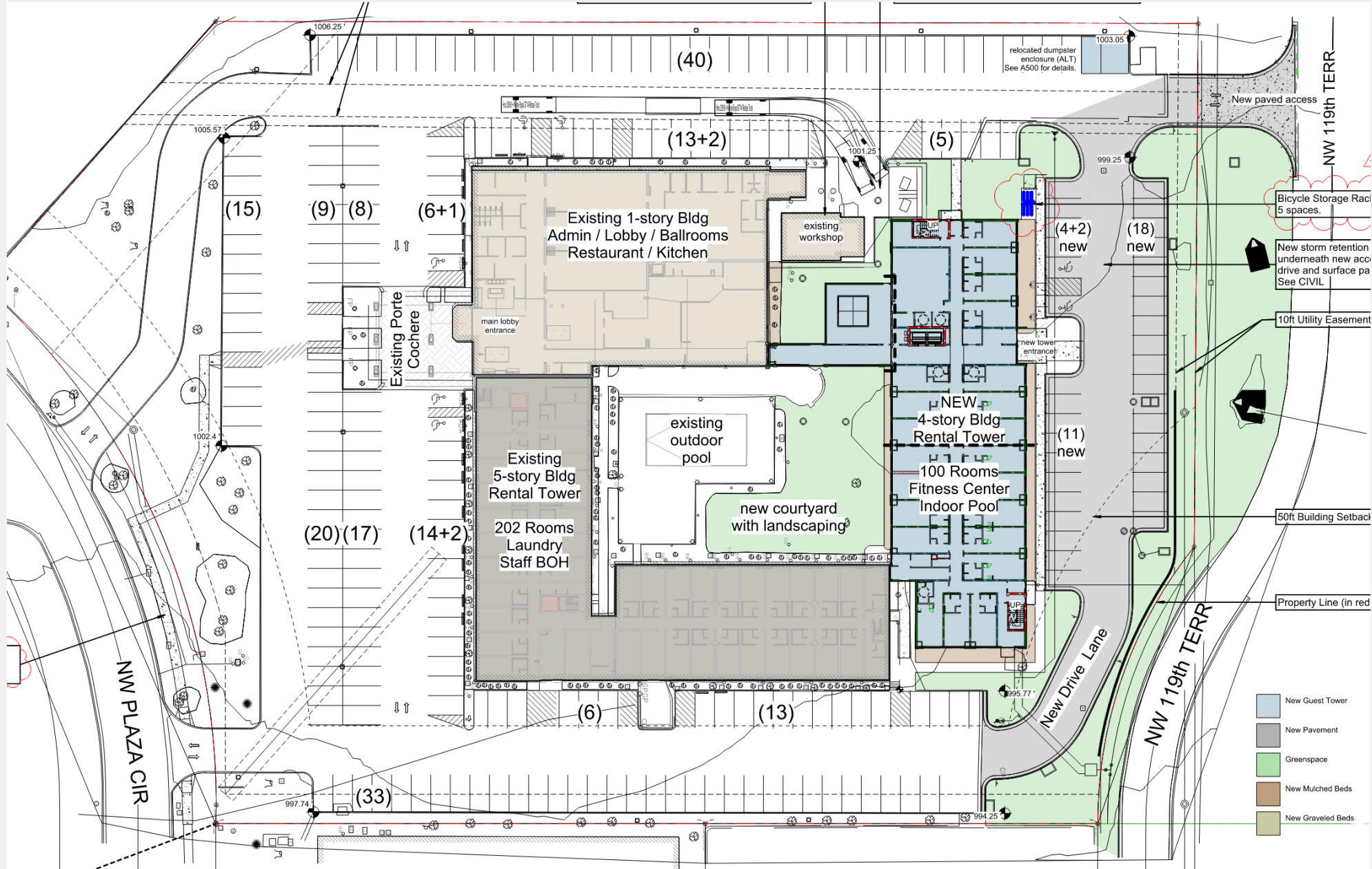


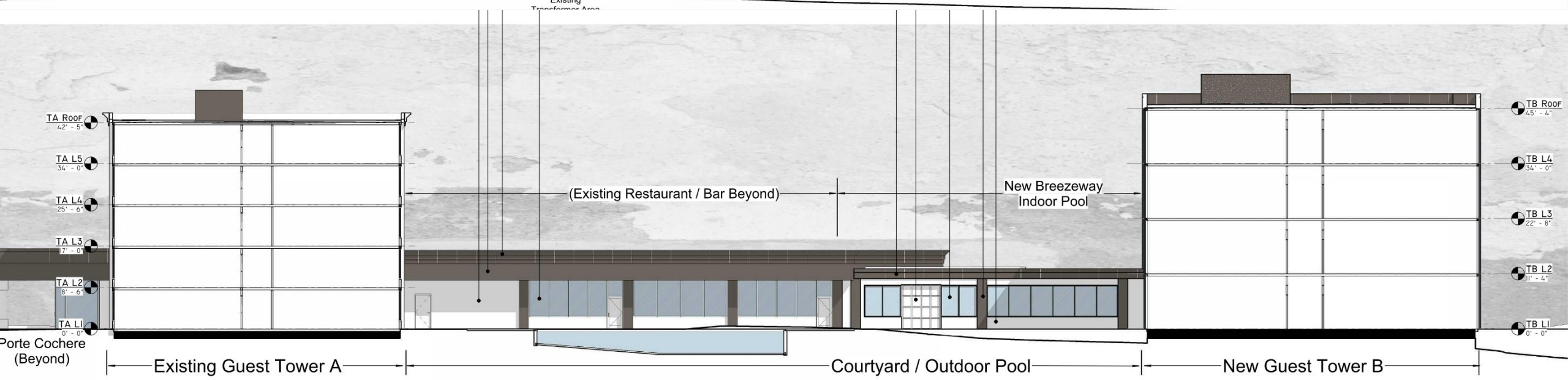
View looking northwest from NW Plaza Circle



View looking south from NW 119th Terrace







Staff Recommendation

Case No. CD-CPC-2023-00154

Development Plan – Non-Residential

- Approval with Conditions