

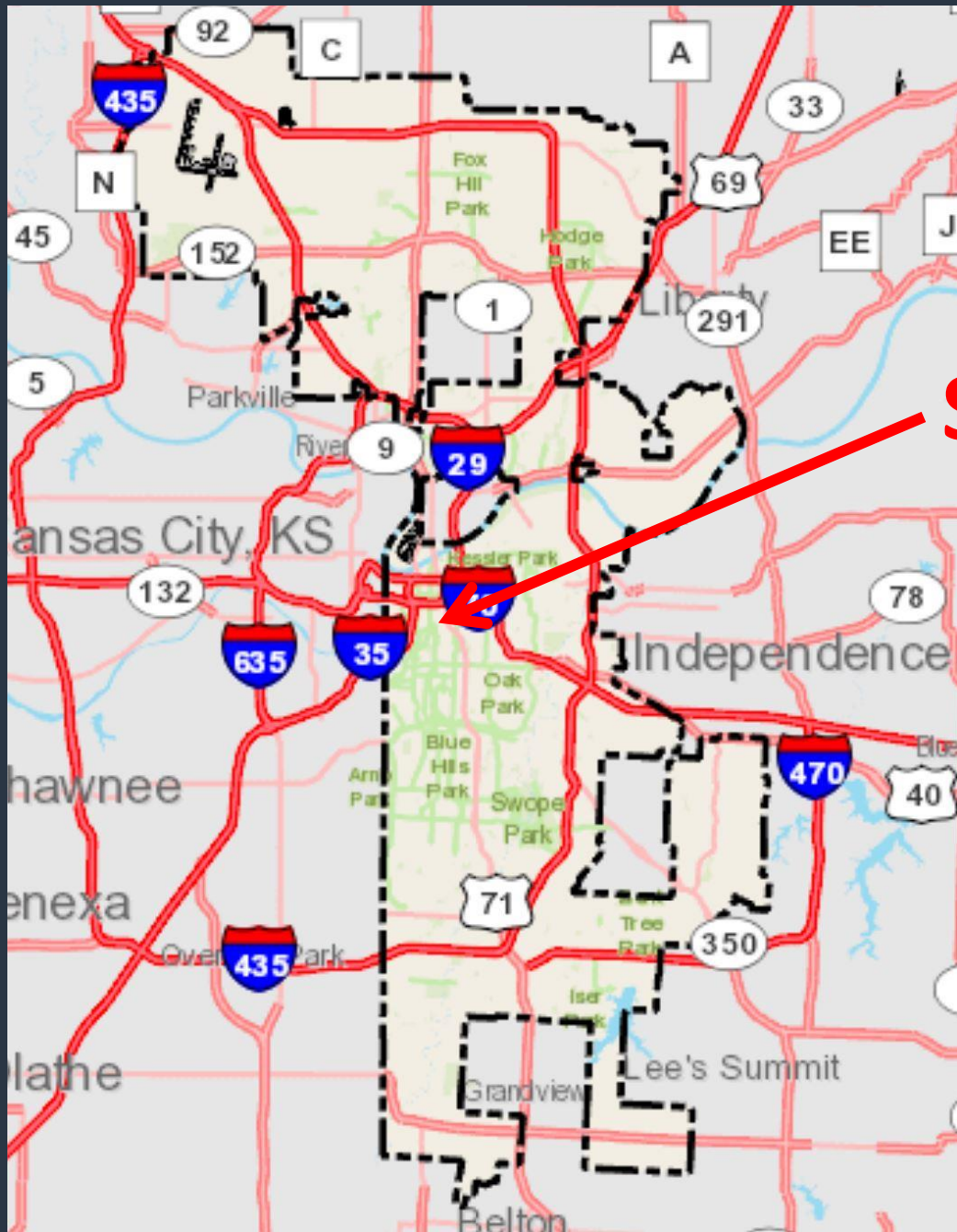
**Docket # 4**

**Case No. CD-CPC-2022-00143**

**Rezoning to District UR  
Development Plan**

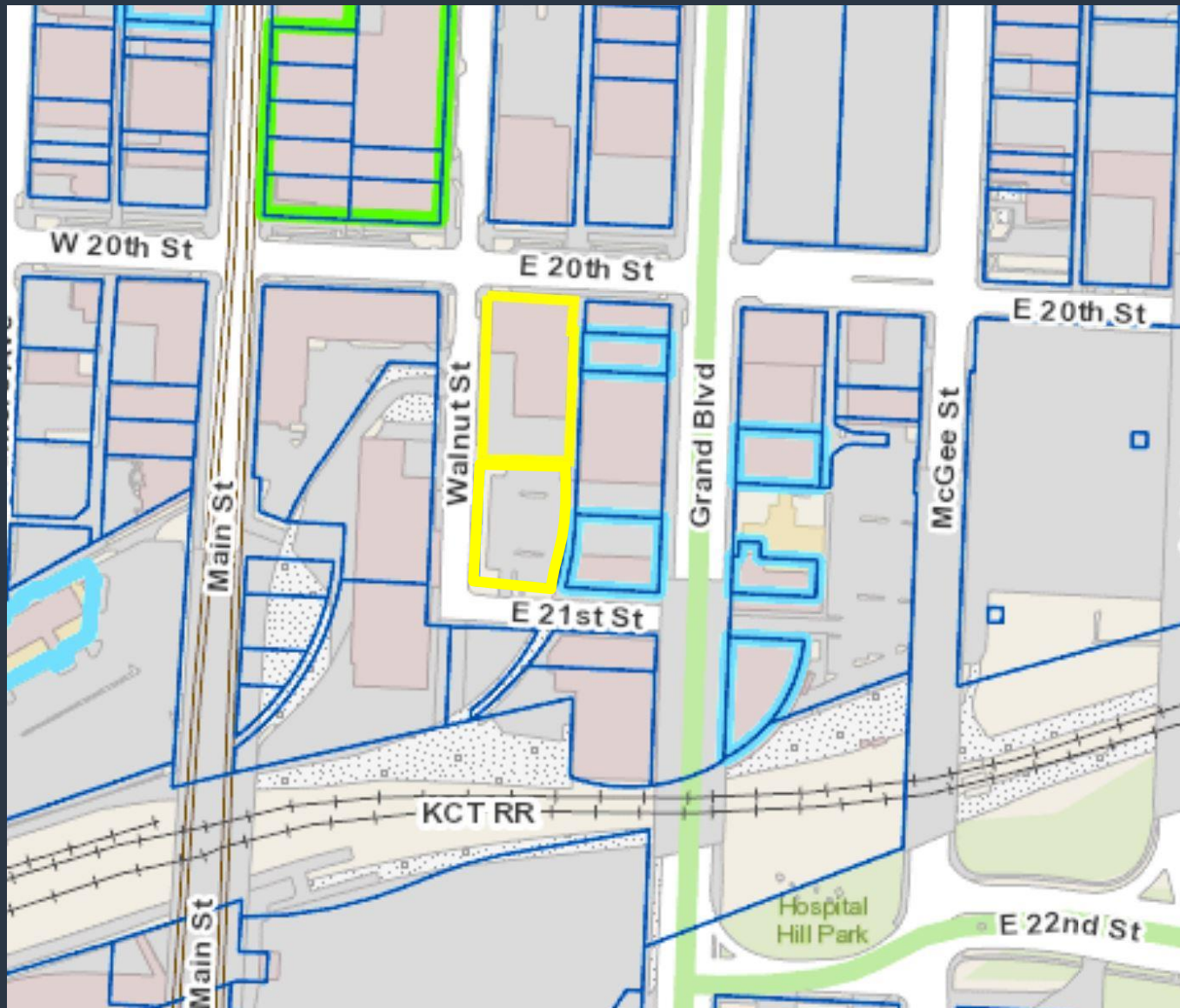
**Freight House Village**





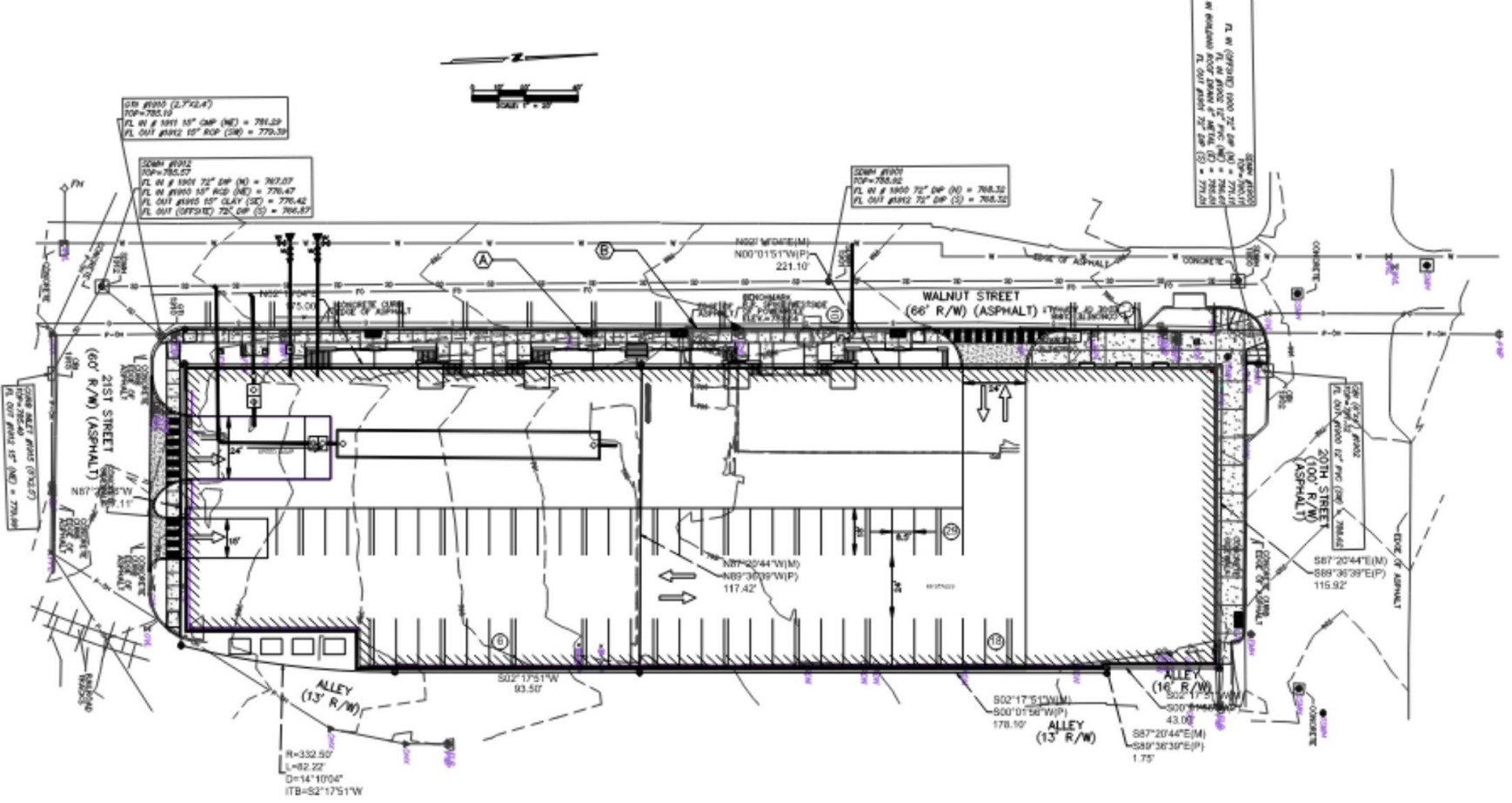
Site







Case No. CD-CPC-2022-00143



SEWER #1900 (2.7x2.4)  
 TOP=785.10  
 FL IN # 1891 15" CMP (NE) = 781.29  
 FL OUT #1892 15" ROP (SE) = 779.39

SEWER #1901 (2.7x2.4)  
 TOP=785.07  
 FL IN # 1891 72" DIP (N) = 782.07  
 FL IN #1893 15" ROP (NE) = 776.47  
 FL OUT #1895 15" CLAY (SE) = 776.42  
 FL OUT #1897 72" DIP (S) = 766.87

SEWER #1902 (2.7x2.4)  
 TOP=785.02  
 FL IN # 1893 72" DIP (N) = 784.32  
 FL OUT #1892 72" DIP (S) = 766.32

SEWER #1903 (2.7x2.4)  
 TOP=784.92  
 FL IN # 1893 72" DIP (N) = 784.02  
 FL IN # 1895 15" ROP (NE) = 776.47  
 FL OUT #1897 72" DIP (S) = 766.87

R=352.50  
 L=82.22  
 D=14'10 3/4"  
 ITB=82°17'51"W

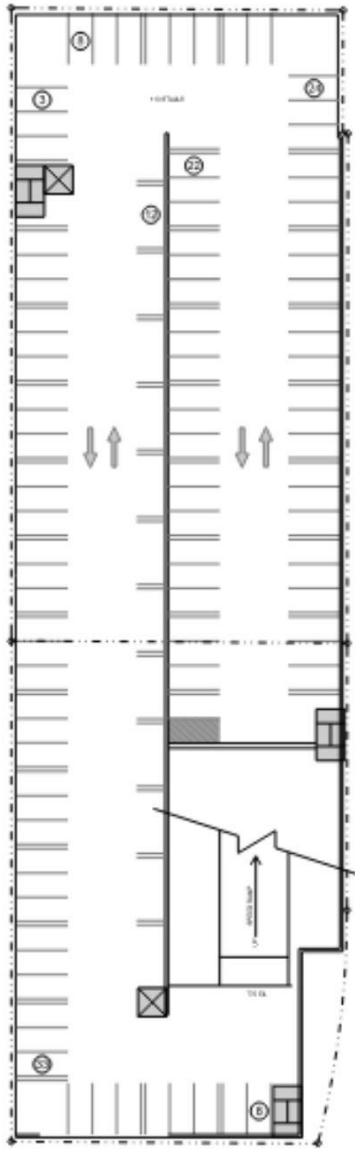
887°20'44"E(M)  
 889°36'39"E(P)  
 115.92

SEWER #1904 (2.7x2.4)  
 TOP=784.82  
 FL IN # 1893 72" DIP (N) = 784.02  
 FL IN # 1895 15" ROP (NE) = 776.47  
 FL OUT #1897 72" DIP (S) = 766.87

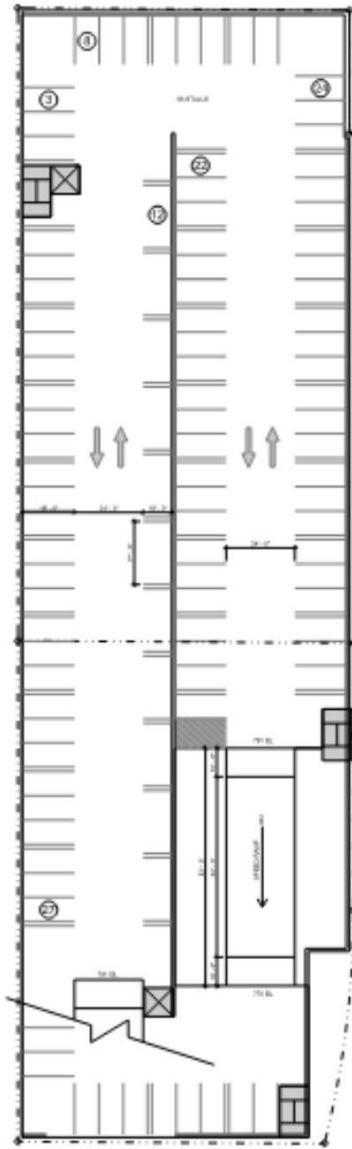
802°17'51"W(M)  
 800°01'58"W(P)  
 178.10

887°20'44"E(M)  
 889°36'39"E(P)  
 1.75





A10 116 - PARKING  
1/16" = 1'-0"



A6 111 - PARKING  
1/16" = 1'-0"



A1 LEVEL 1  
1/16" = 1'-0"





West



East



North

South







View from the corner of Walnut Street and E 20<sup>th</sup> Street



Case No. CD-CPC-2022-00143

# Staff Recommendations:

**Case No. CD-CPC-2022-00143**

**Approval with conditions**