



# ORDINANCE NO. 230975 (Committee Substitute / Held in Committee)

## Todd Creek Land Acquisition

Authorizing the Director of Water Services Department to negotiate and execute an Option to Purchase Agreement between Hunt Midwest Properties, L.L.C. and the City of Kansas City, Missouri, through its Water Services Department, for the Todd Creek Facility Land Acquisition; authorizing the expenditure of \$799,058.00 by the Director of the Water Services Department to fulfill such contract; and recognizing this ordinance as having an accelerated effective date.

December 6, 2023

Transportation, Infrastructure & Operations  
Committee

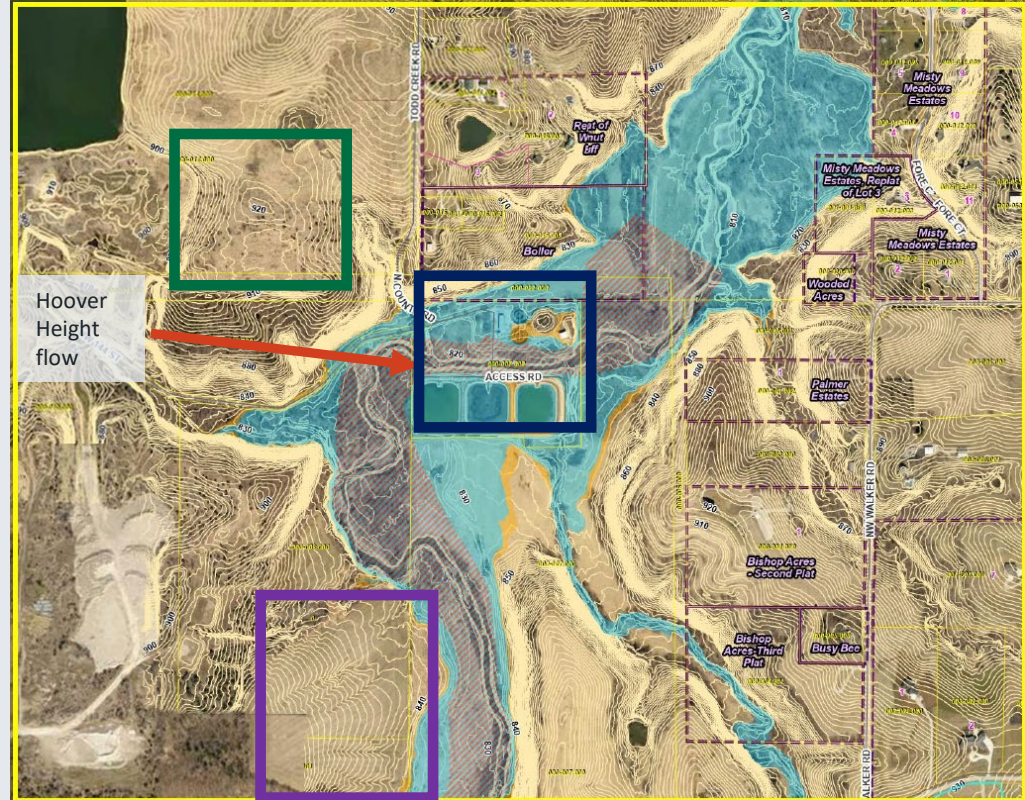


# Todd Creek WWTP Site Map

Current Plant Site

North Site

Southeast Site



# Public Engagement

- August 2023 – Public meeting held
- September 2023 – Platte County Commissioners Working Session Presentation
- November 2023 – Second Public Meeting

## Retrospective

- Initial public input was too late in the design process. Acknowledgment that it should have started much earlier.
- Revise public engagement guidance major facilities
- Department developing engagement standards and expectations

# Environmental Concerns

## North Site

- Phase 1 Environmental Report completed 2/23
  - No Phase 2 sampling recommended
- Omission discovered by community
  - 2020 “Notice and Order to Abate”
- Phase 2 Environmental Assessment will be completed

## Southeast Site

- Phase 1 Environmental Assessment will be completed if committee substitution passes followed by Phase 2 if recommended.

# Geotechnical Concerns

## North Site

- Previously surface mined
- Potential future subsurface mining
- Risk management steps will be implemented is if mining commences

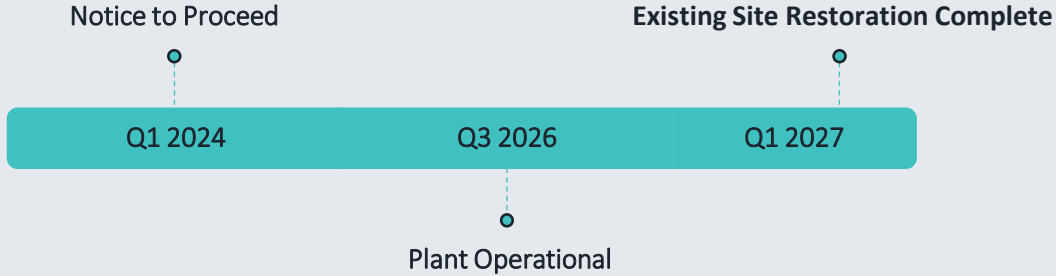
## South Site

- No geotechnical borings completed at this time
- Risk management steps will be established if mined

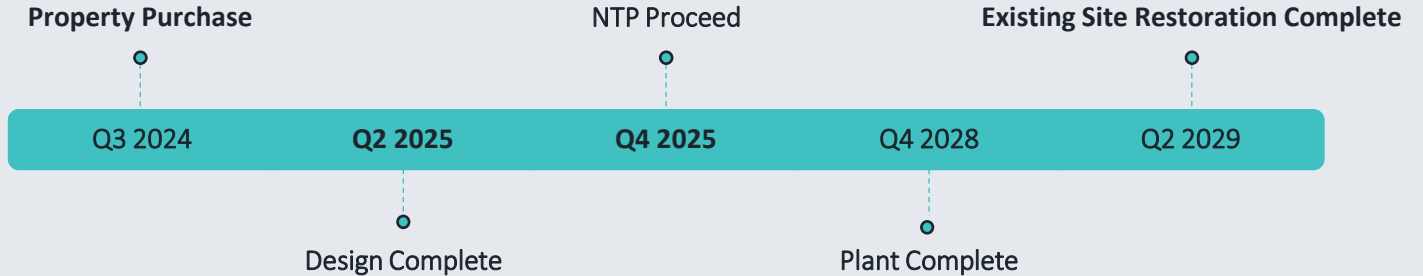
# Delay Capital Improvement Plan Effects

- Todd Creek WWTP project is currently included in the FY24 WW CIP
- Site relocation will likely delay project to the FY26 CIP
- Evaluating offset of FY26 impacts

### North Site Baseline



### Southeast Site





THANK YOU

A decorative graphic at the bottom of the slide consisting of several overlapping, wavy bands of blue in various shades, from light to dark, creating a sense of water or movement.