


**O'BUCK
NEIL
BRIDGE**



US
169



CITY OF
KANSAS CITY,
MISSOURI

Ordinance 220450

Community generated vision for discussion
with engineering challenges let to be worked through.
Rendering by Confluence

<https://www.thinkconfluence.com/>



ENHANCEMENTS BUDGET REQUEST SUMMARY

- 1 Activating the Area
 - A. Old Bridge as Linear Park
est: \$50,000,000
 - B. New Skate Park
est: \$500,000-\$750,000
 - C. Storytelling Signage
est: \$250,000
- 2 Stairs & Sculptures;
 - A. Stair Structure
est: \$500,000
 - B. Sculpture Commissions
est: \$1,000,000
- 3 Maximizing the Murals
est: PENDING (MoDOT to cover)
- 4 Improving Safety & Connections
est: \$250,000-\$500,000
lights/trees/safety upgrades

TOTAL ENHANCEMENT REQUEST WITH OLD BRIDGE CONVERTED TO LINEAR PARK: \$52,500,000 - \$53,00,000

TOTAL ENHANCEMENT REQUEST WITHOUT OLD BRIDGE CONVERTED TO LINEAR PARK: \$2,250,000 - \$3,00,000

US 169 – BUCK O'NEIL BRIDGE

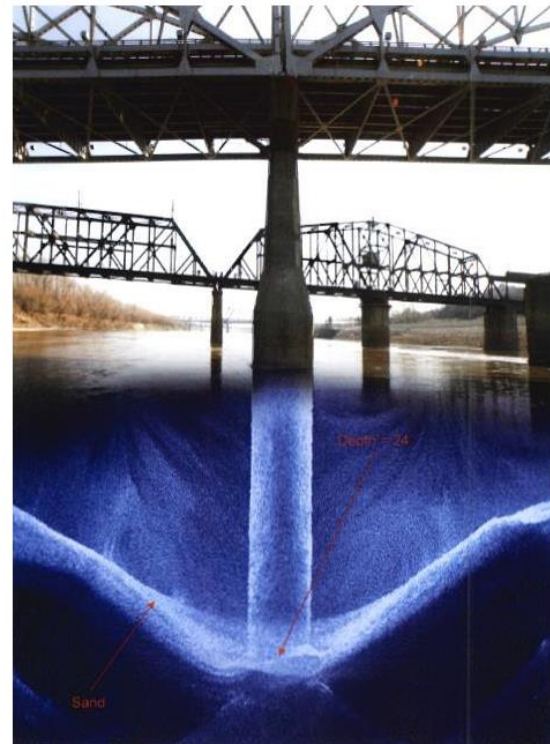


Ordinance 220450

Ordinance 180068



Short Term Repairs



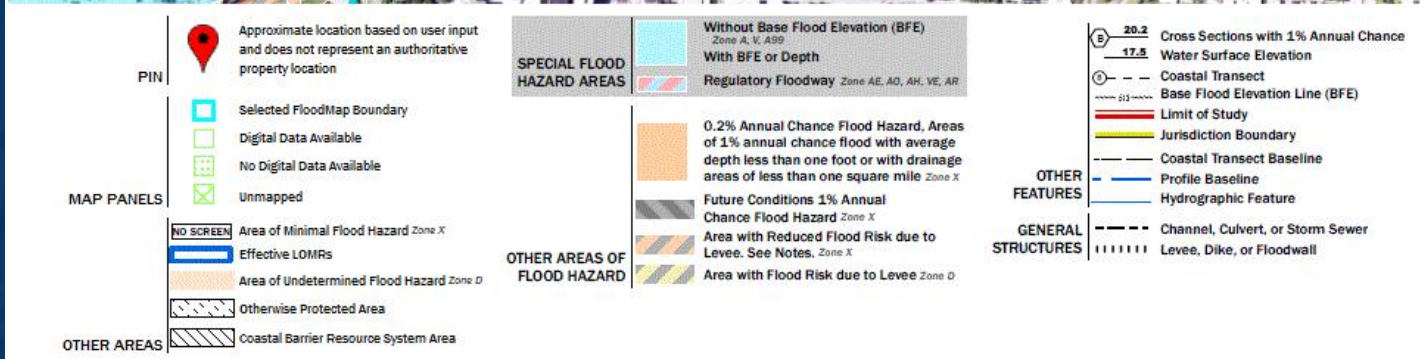
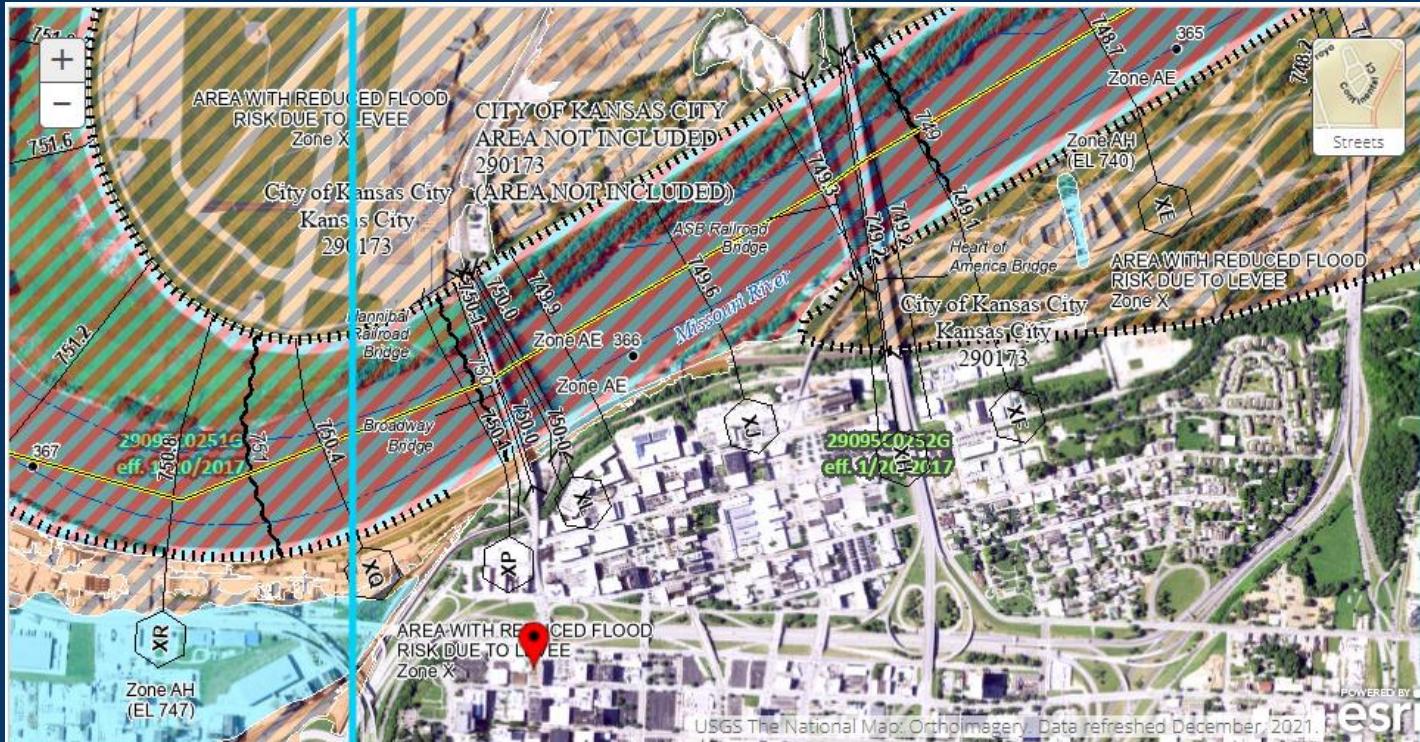
www.beyondtheloopkc.com

http://www.modot.org/kansascity/major_projects/Buck_O'Neil_bridge.htm

US 169 – BUCK O'NEIL BRIDGE



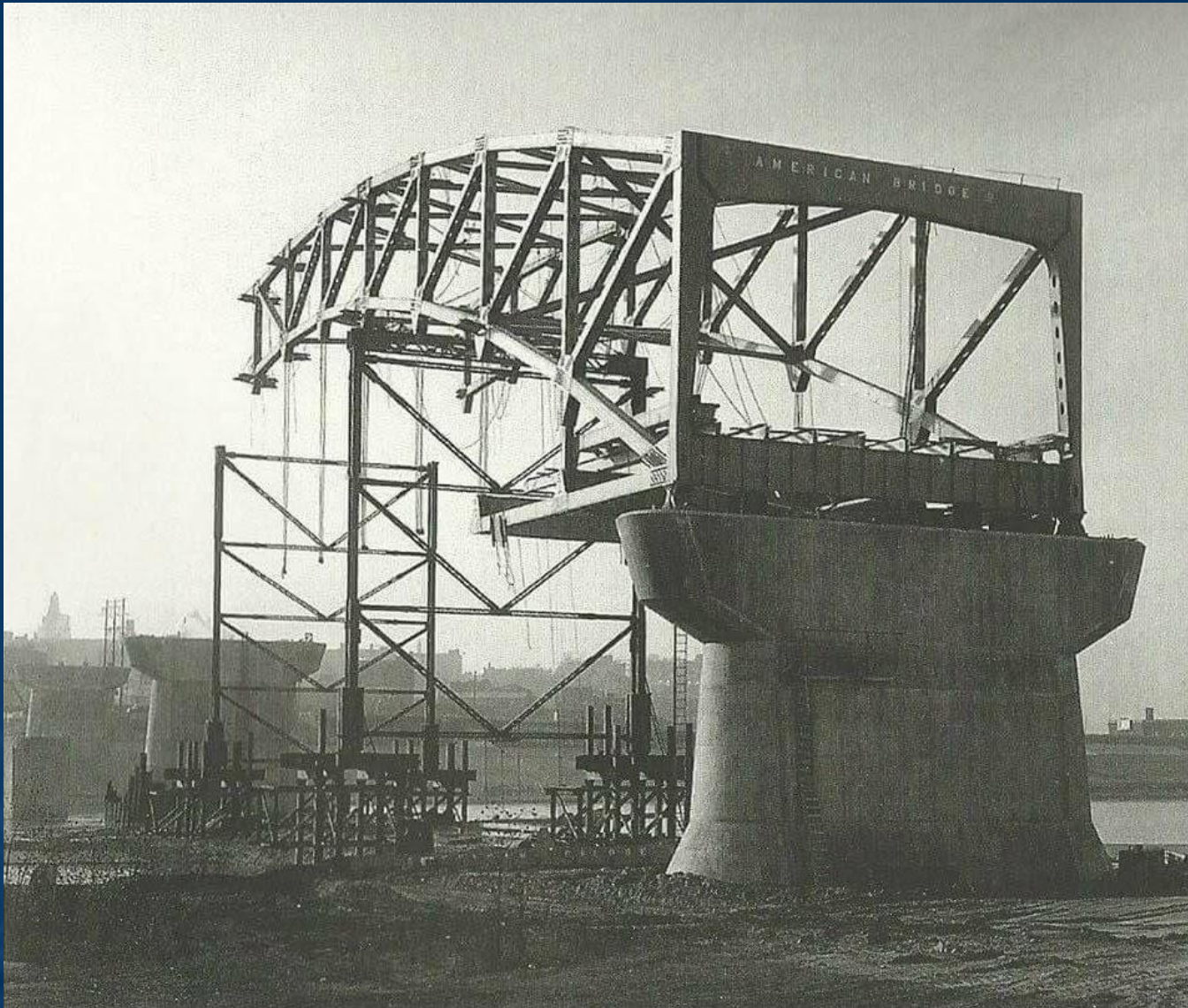
Ordinance 220450



US 169 – BUCK O'NEIL BRIDGE



Ordinance 220450



US 169 – BUCK O'NEIL BRIDGE

