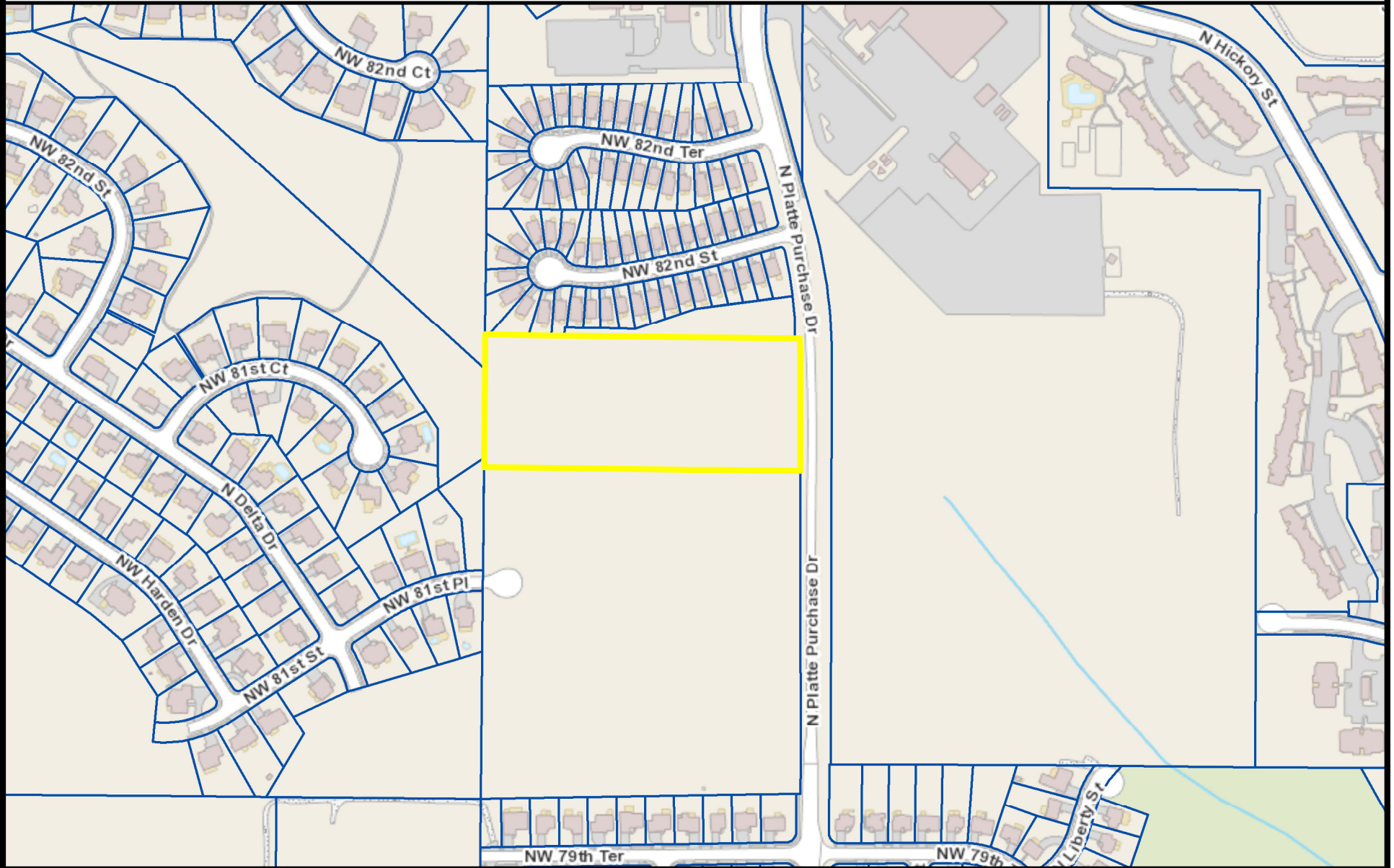
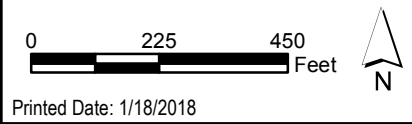


# 8150 N Platte Purchase



While the City of Kansas City, Missouri makes every effort to maintain and distribute accurate information, no warranties and/or representations of any kind are made regarding information, data or services provided. In no event shall the City of Kansas City, MO, be liable in any way to the users of this data. Users of this data shall hold the City of Kansas City, MO harmless in all matters and accounts arising from the use and/or accuracy of this data. © 2018 City of Kansas City, Missouri.



# 8150 N Platte Purchase

Pin: 228459

APN: PL192010000003001001

Subdivision:

Block:

Lot: R 1

Owner: CITY OF KANSAS CITY

414 E 12TH ST

KANSAS CITY, MO 64106-

Address: 8150 N PLATTE PURCHASE DR

ZIP Code: 64151

Council District: 2nd

Trash Day: Tuesday

School District: PLATTE COUNTY R-III

Census Neighborhood: Barry Harbour

Park Region: North

PW Maintenance District: D1

Impact Fee Zone: E

Zoning: R-7.5

Land Use: 1111 - Single Family (Non-Mobile Home Park)

Bldv Front Footage:

Effective Date: 6/6/2016

Assessed Land: 0

Assessed Improve: 0

Exempt Land: 0

Exempt Improve: 0

Square Feet: 246,984.165

Acres: 5.67

Perimeter: 2,177.548

PLSS: n335110

Legal: BEG SW COR SEC 10, TH N 800' TO POB, TH N 325', TH E TO W R/W PLATTE PURCHASE DR

While the City of Kansas City, Missouri makes every effort to maintain and distribute accurate information, no warranties and/or representations of any kind are made regarding information, data or services provided. In no event shall the City of Kansas City, MO, be liable in any way to the users of this data. Users of this data shall hold the City of Kansas City, MO harmless in all matters and accounts arising from the use and/or accuracy of this data. © 2012 City of Kansas City, Missouri.

Printed Date: 1/18/2018