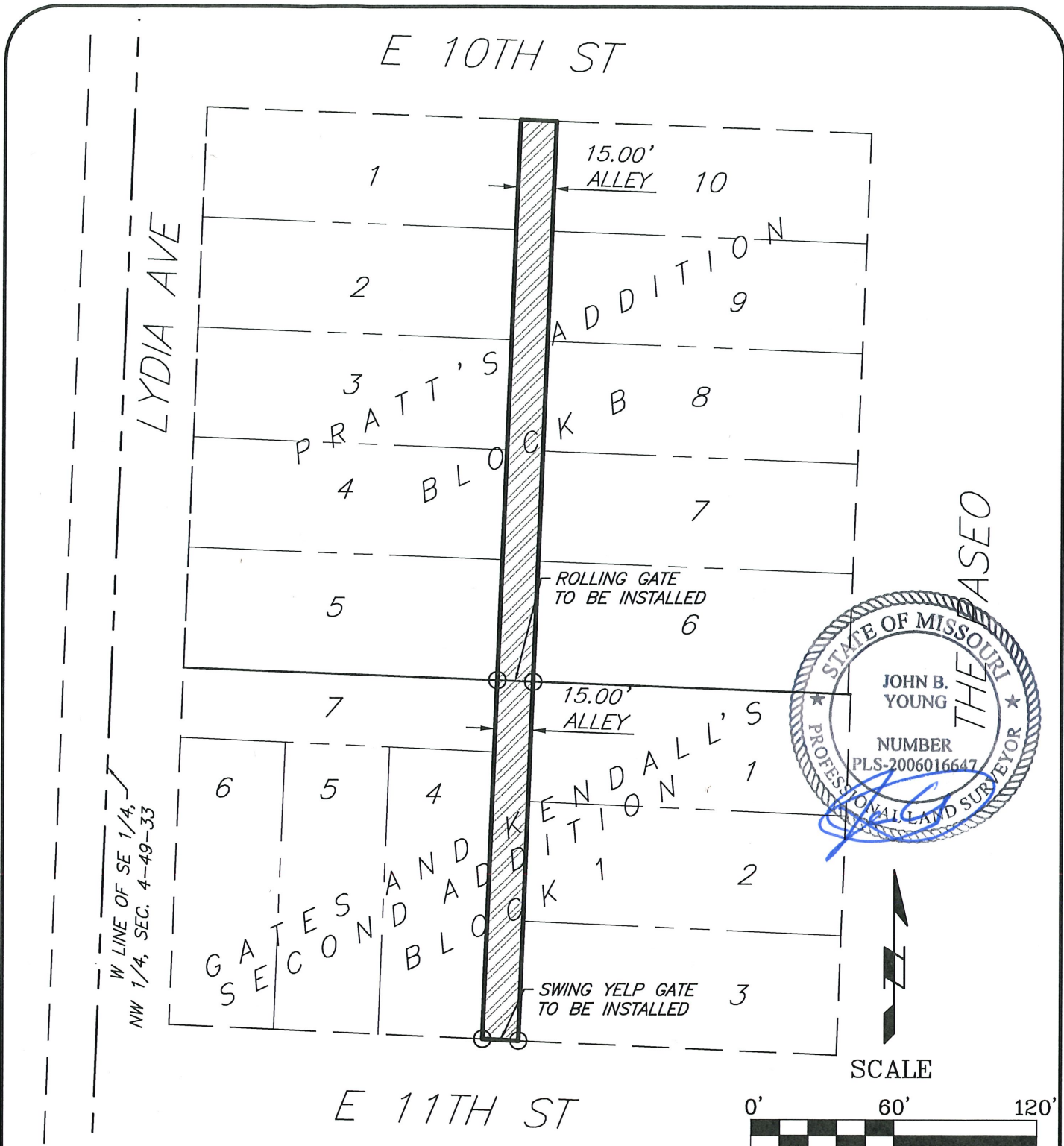


ALLEY VACATION DESCRIPTION

All of an alley in Block B, PRATT'S ADDITION, recorded in Book 2, Page 25 at the Jackson County Recorder of Deeds office, and Block 1, GATES AND KENDALL'S SECOND ADDITION, recorded in Book 12, Page 64 at said Recorder of Deeds office, both subdivisions in the City of Kansas City, Jackson County, Missouri, being 15 feet wide, lying between the South line of East 10th Street, as now established, and the North line of East 11th Street, as now established. Prepared on June 6, 2025 by John B. Young, PLS-2006016647.





Location: S:\25.239 - E 10th & 11th St Alley\DRAWINGS\2025.06.06 VACATION\25-239 VACATION.dwg-Jun 06, 2025-3:16pm



J & J
SURVEY
 LLC

8680A N. GREEN HILLS ROAD • KANSAS CITY, MO 64154
 PHONE (816)741-1017 • FAX (816)741-1018

ALLEY VACATION EXHIBIT

PRATT'S ADDITION & GATES AND
 KENDALL'S SECOND ADDITION,
 KANSAS CITY, JACKSON COUNTY,
 MISSOURI