

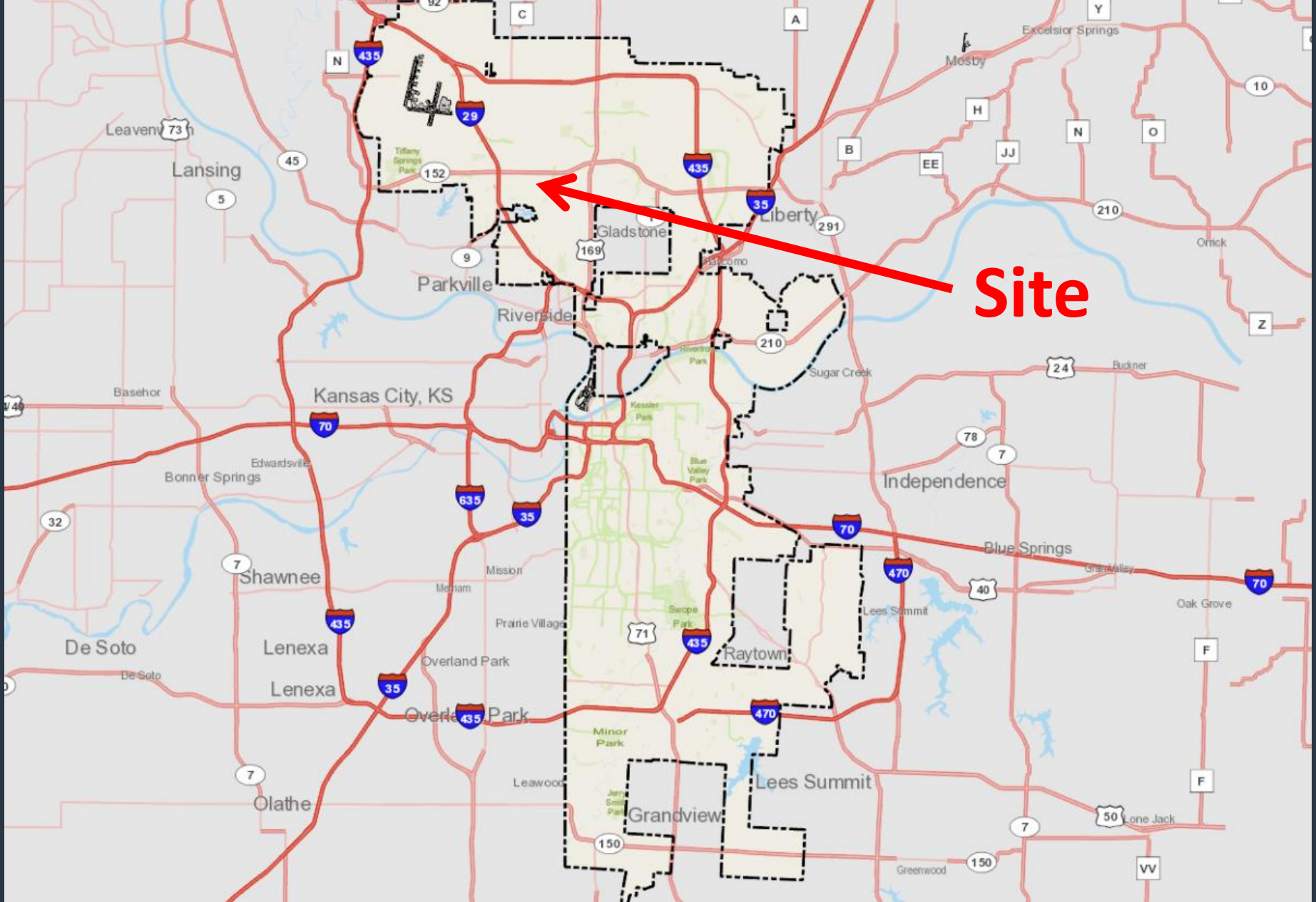
Docket # 6

Case No. CD-CPC-2022-00067

Development Plan (Residential)

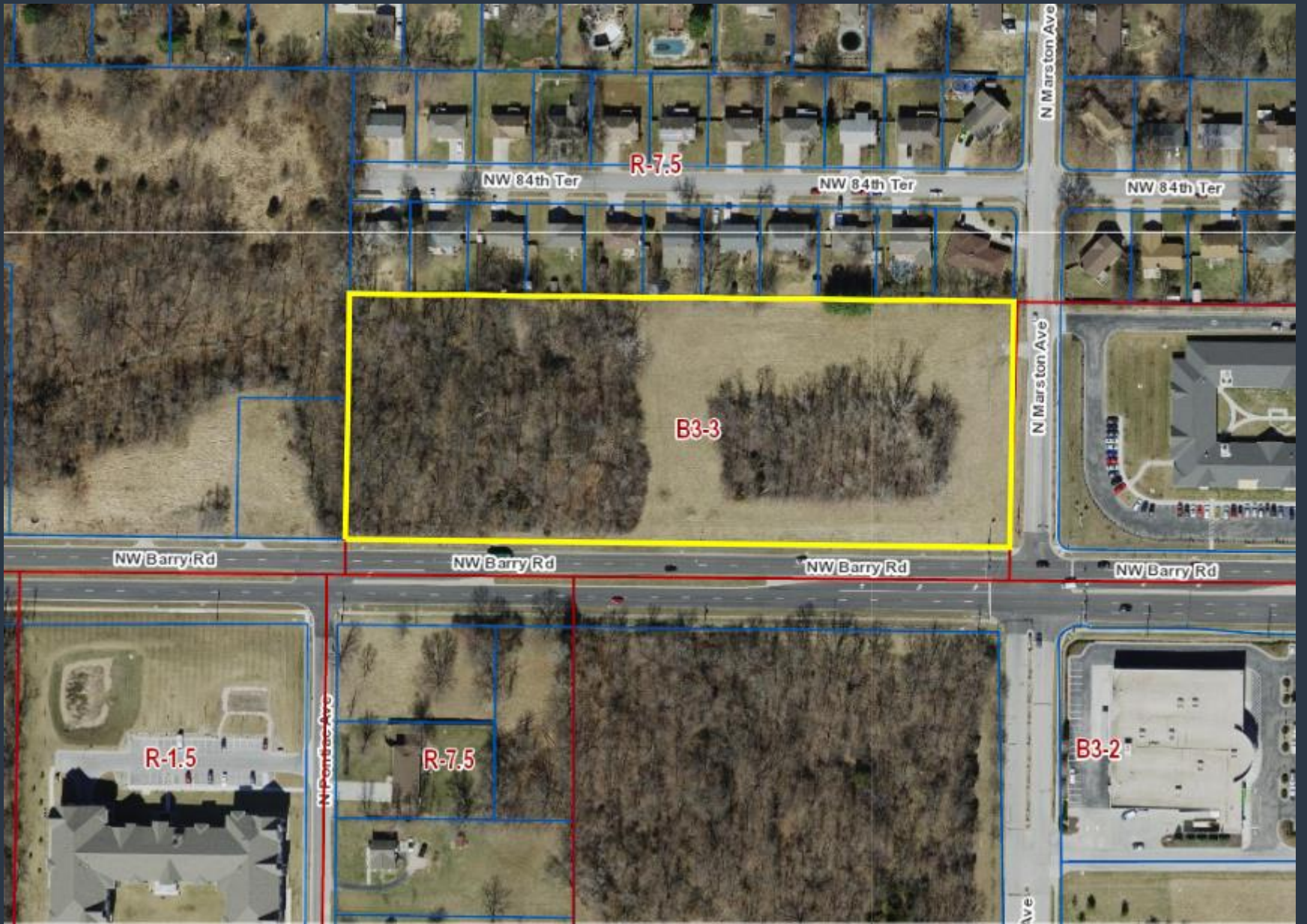
O'Reilly Development Continuum Care





Site

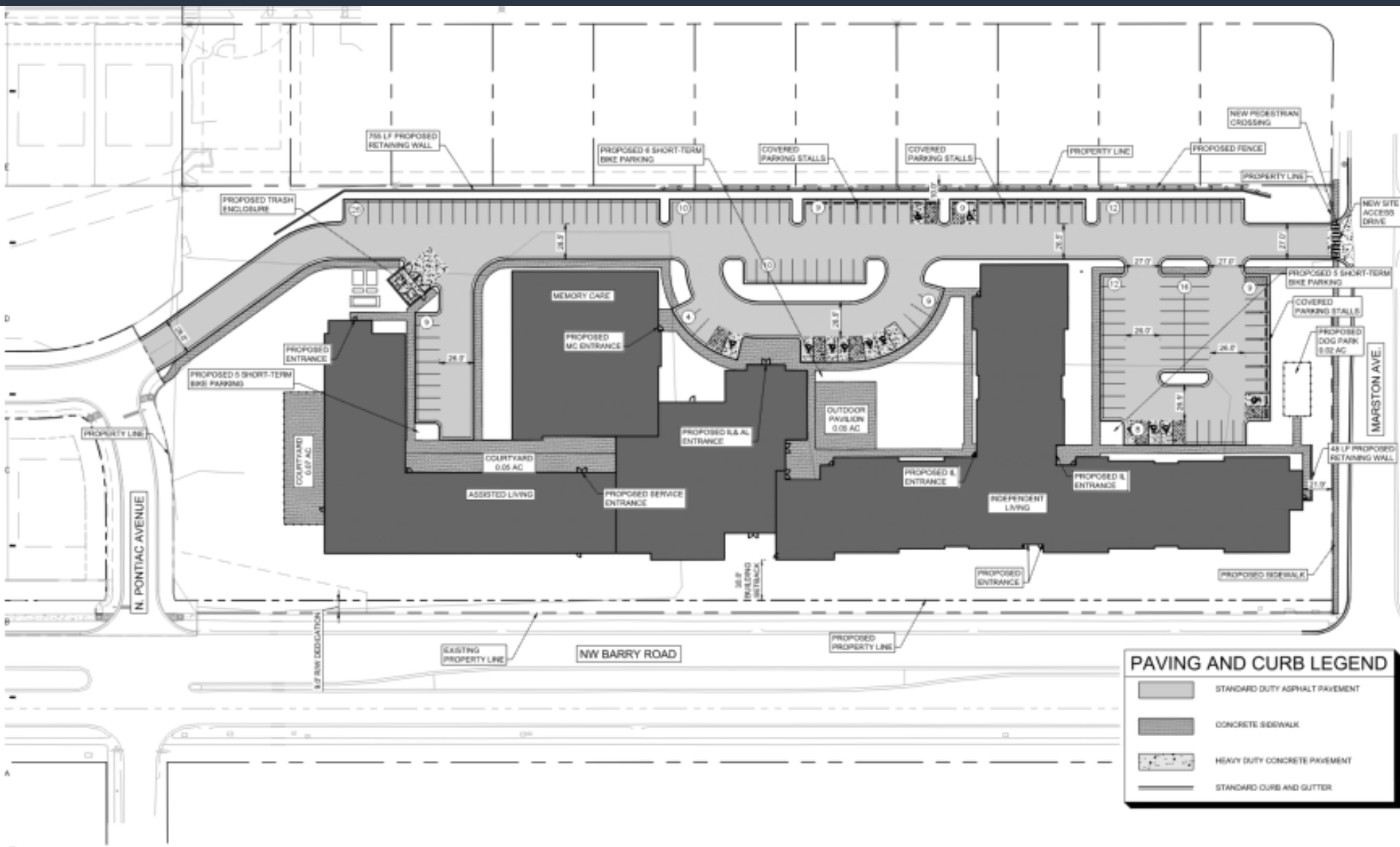


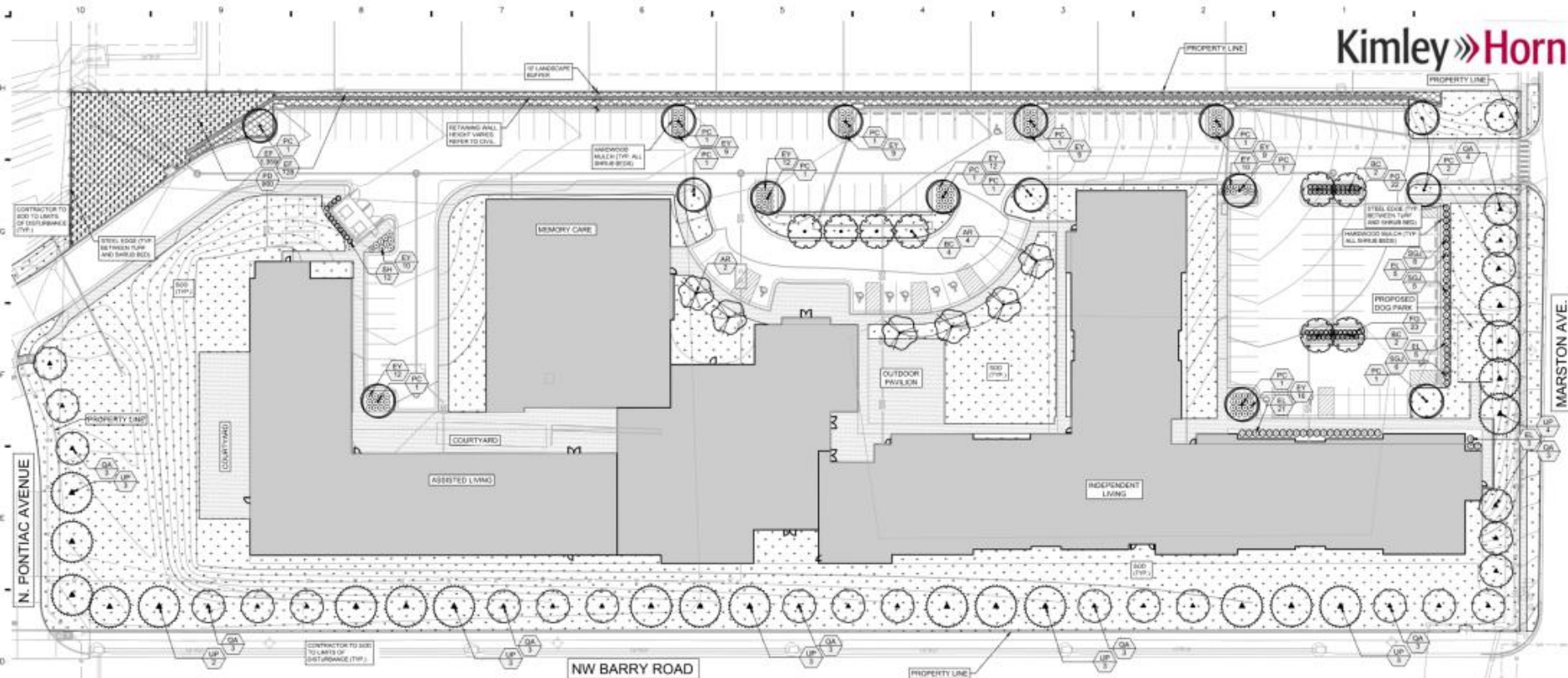


Case No. CD-CPC-2022-00067



Case No. CD-CPC-2022-00067





LANDSCAPE SCHEDULE

TREES	CODE	QTY	BOTANICAL / COMMON NAME	CONT	CALIPER	SIZE	REMARKS
	AR	6	ACER RUBRUM ARMSTRONG ARMSTRONG RED MAPLE	B&B/C	2" CAL.	—	SINGLE, STRAIGHT LEADER, FULL & MATCHING
	PC	15	PISTACIA CHINENSIS CHINESE PISTACHE	B&B/C	2" CAL.	—	SINGLE, STRAIGHT LEADER, FULL & MATCHING
	QA	25	QUERCUS ACUTISSIMA SAWTOOTH OAK	B&B/C	2" CAL.	—	SINGLE, STRAIGHT LEADER, FULL & MATCHING

PLANTING NOTES:

1. ALL PLANT MATERIAL SHALL BE INSTALLED ACCORDING TO SOUND NURSERY PRACTICES AND SHALL MEET ALL STANDARDS AS STATED IN THE LATEST EDITION OF "AMERICAN STANDARD FOR NURSERY STOCK" BY THE AMERICAN ASSOCIATION OF NURSERYMEN.
2. NO SUBSTITUTIONS IN PLANT MATERIALS SHALL BE MADE WITHOUT WRITTEN AUTHORIZATION FROM OWNER OR LANDSCAPE ARCHITECT. IN THE EVENT OF DISCREPANCIES BETWEEN THE DRAWING AND THE PLANT LIST, THE DRAWING SHALL PREVAIL.
3. LOCATE ALL UTILITIES PRIOR TO ANY DIGGING OPERATIONS. CONTRACTOR SHALL BE RESPONSIBLE FOR ALL DAMAGES TO EXISTING UTILITIES INCURRED BY HIS WORK.
4. STAKING AND DIPPING ALTERNATIVES: METHODS INDICATED IN DRAWING DETAILS ARE PREFERRED. CONTRACTOR MAY SUGGEST ALTERNATE METHODS, ASSUMING FULL RESPONSIBILITY FOR THEIR IMPLEMENTATION. CONTRACTOR SHALL REPLACE PLANT OR LANDSCAPE ANY TREES BLOWN OVER OR DAMAGED DUE TO INADEQUATE STAKING AT NO ADDITIONAL COST TO THE OWNER.
5. PLANTS MASSED IN BEDS SHALL BE ARRANGED USING TRIANGULAR SPACING.
6. PROVIDE A STEEL EDGE BETWEEN ALL PLANTING BEDS AND LAWN AREAS. REFERENCE SITE PLAN.
7. ALL PLANTING BEDS TO BE TOP DRESSED WITH A MINIMUM OF 2" SHARDED HARDWOOD MULCH. REFERENCE LANDSCAPE PLAN.
8. LAY TALL FESCUE FOR PROPOSED LAWN AREAS TO ALL EDGES OF PAVEMENT AND/OR LIMITS OF DISTURBANCE OUTSIDE R.O.W. OR PROPOSED LANDSCAPE EASEMENT.
9. THE CONTRACTOR SHALL BE RESPONSIBLE FOR THE MAINTENANCE OF ALL LANDSCAPE PLANTS UNTIL ACCEPTANCE. ALL REQUIRED MAINTENANCE SHALL BE MAINTAINED IN A MEET AND ORDERLY MANNER.



3 SOUTH ELEVATION - IL (EAST)
1/8" = 1'-0"



2 SOUTH ELEVATION - IL (WEST)
1/8" = 1'-0"

Material / Color	Description
[Sample]	TRUSS/RAFTER 1" GYP. & 2" OVER COLOR
[Sample]	ACUM. EXTERIOR WHITE
[Sample]	LANDING WHITE
[Sample]	CEMENT BOARD Siding DARK HAZEL OR MC COLOR 1 BY THE ARCHITECT
[Sample]	CEMENT BOARD Siding DARK HAZEL OR MC COLOR 2 BY THE ARCHITECT WHITE
[Sample]	EXT. FINISH COLOR 1 BY THE ARCHITECT
[Sample]	SPINALT 2" x 4" x 8" T&G OR EQUAL HARD WOOD
[Sample]	STANDING SEAM METAL ROOF LOFT ONLY

KEY PLAN

EXTERIOR FINISH LEGEND





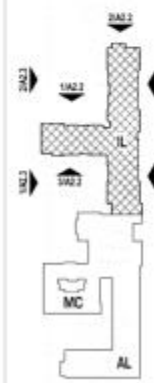
2 EAST ELEVATION - IL (SOUTH)
1/8" = 1'-0"



3 WEST ELEVATION - IL
1/8" = 1'-0"



1 EAST ELEVATION - IL (NORTH)
1/8" = 1'-0"



KEY PLAN

	RANDOM LIGHT BEIGE COLOR
	LIGHT STONE FRONT WITH WHITE ACCENTS
	WHITE BRICK
	CEMENT BOARD STONE PANELS WHITE OR COLOR OF THE ARCHITECTURE
	CEMENT BOARD STONE PANELS WHITE OR COLOR OF THE ARCHITECTURE WITH TOP HORIZONTAL WHITE
	GREY FINISH OF THE ARCHITECTURE
	ASPHALT SHINGLES OR METAL ROOF WITH METAL ROOF LIGHT GREY
	STANDING SEAM METAL ROOF LIGHT GREY

EXTERIOR FINISH LEGEND





2 NORTH ELEVATION - IL (EAST)
1/8" = 1'-0"



1 NORTH ELEVATION - IL (WEST)
1/8" = 1'-0"

	TIN BRICK LIGHT MULTICOLOR COLOR
	ALL-OVER STONEFRONT WHITE
	WINDOWS WHITE
	CEMENT BOARD SIDING JEWEL HARDIE BRICK COLOR 2 OR FINE BRICKWORK
	CEMENT BOARD SIDING JEWEL HARDIE BRICK COLOR 2 OR FINE BRICKWORK WHITE
	BRICK FINISH OR FINE BRICKWORK
	ASPHALT SHINGLES THREE-STEP SLATE OR LOCAL WOOD SHAKE
	STAINED GRAY METAL ROOF WITH COPPER

KEY PLAN EXTERIOR FINISH LEGEND



2

FROM BARRY RD LOOKING NORTHEAST



1

FROM BARRY RD LOOKING NORTHWEST



View looking northeast from intersection of NW Barry Rd and N Marston Ave



Case No. CD-CPC-2022-00067



View looking southeast from N Marston Ave



Case No. CD-CPC-2022-00021

Staff Recommendations:

Case No. CD-CPC-2022-00067

Approval with conditions

