

City Plan Commission

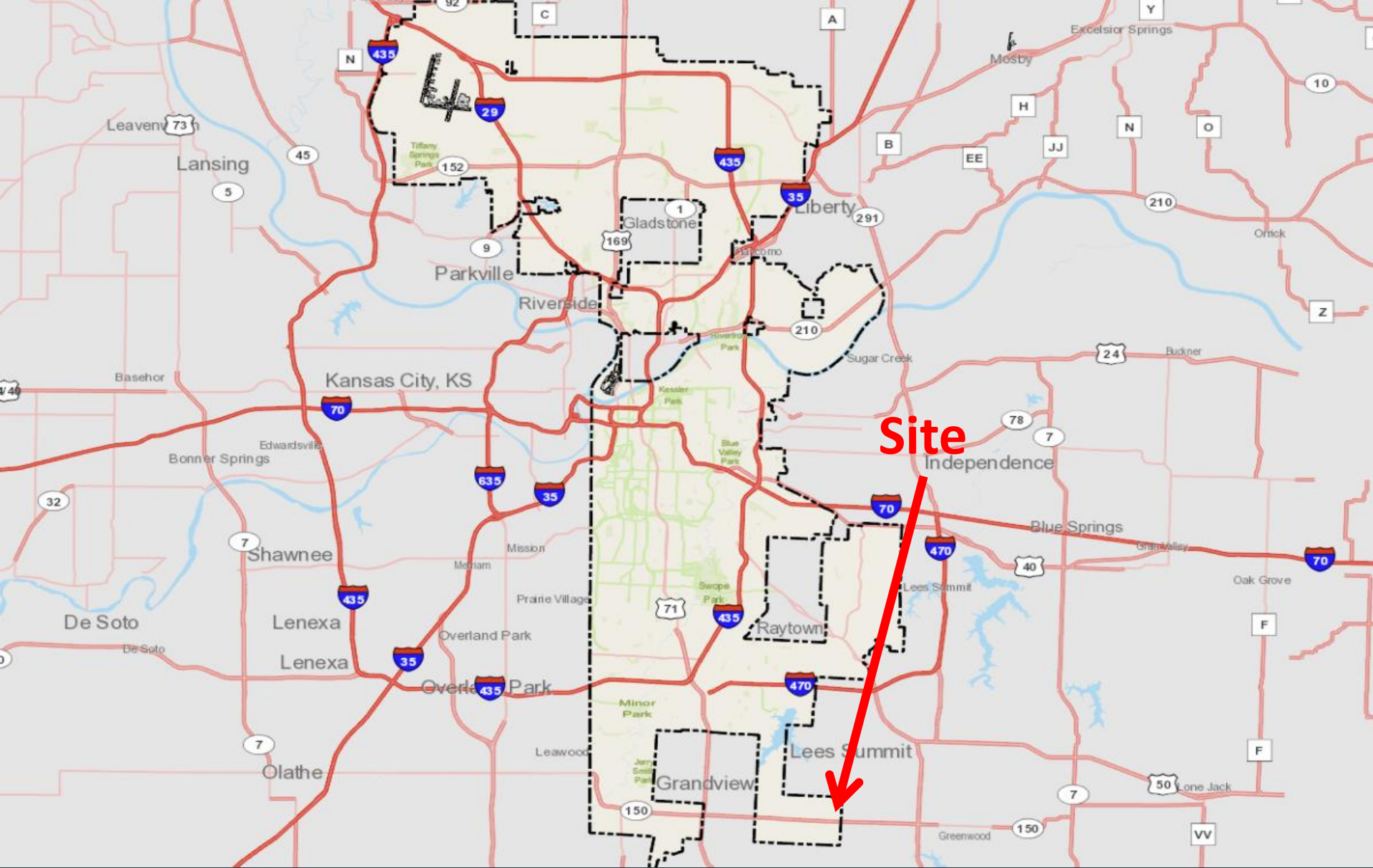
December 6, 2022

Docket Item No. 6

6.1 Case No. CD-CPC-2022-00177
Rezoning

6.2 Case No. CD-CPC-2022-00178
Development Plan

Summit View Farms
East 139th Street and Horridge Road



Docket No. 6



Site



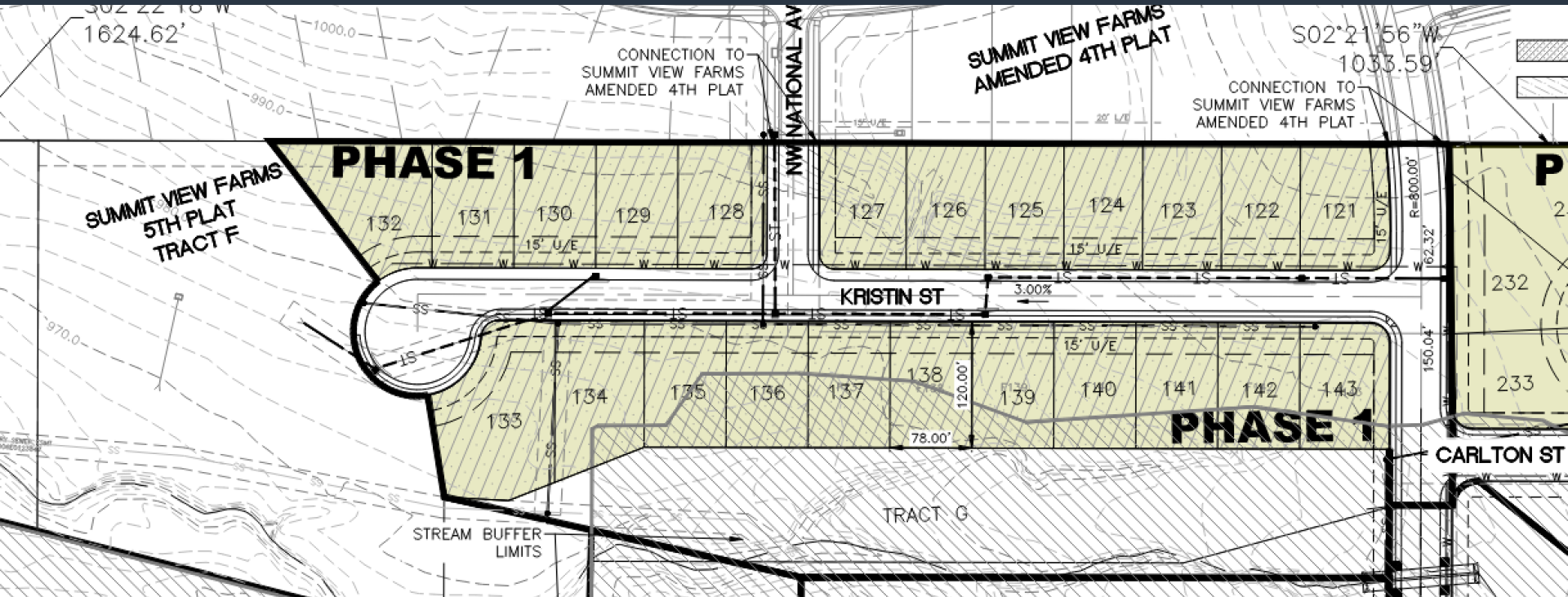
Rezoning

- Currently Zoning: R-80
- Proposed Zoning: R-7.5
- Adjacent property to east is single family homes located within Lee's Summit
- Future Land Use for the site is Residential Low Density and Open Space

Development Plan

- Connecting to existing Summit View Farms located in Lee's Summit
- 300 Single Family Lots
- 9 Tracts
- 7 Phases
- Amenities include Walking Trails and a Dog Park

Development Plan



Docket No. 6

Requested Deviation

- **Sidewalks - Section 88-405-07** - Sidewalks must be provided in accordance with the department of public works' Standards, Specifications, and Design Criteria

Condition Revision

- 7C- Revise the plan to show a 30 foot ~~POE~~ **Easement** between Lots 286, 294-299 and 143rd/Kline Avenue and submit a preliminary landscape buffer plan. This should include a cross section to ensure that the rear yards are adequately buffered from the public rights of way.

Staff Recommendation

Docket Item No. 6

6.1 Case No. CD-CPC-2022-00177
Rezoning - **Approval**

6.2 Case No. CD-CPC-2022-00178
Development Plan - **Approval with Conditions**

Summit View Farms
East 139th Street and Horridge Road