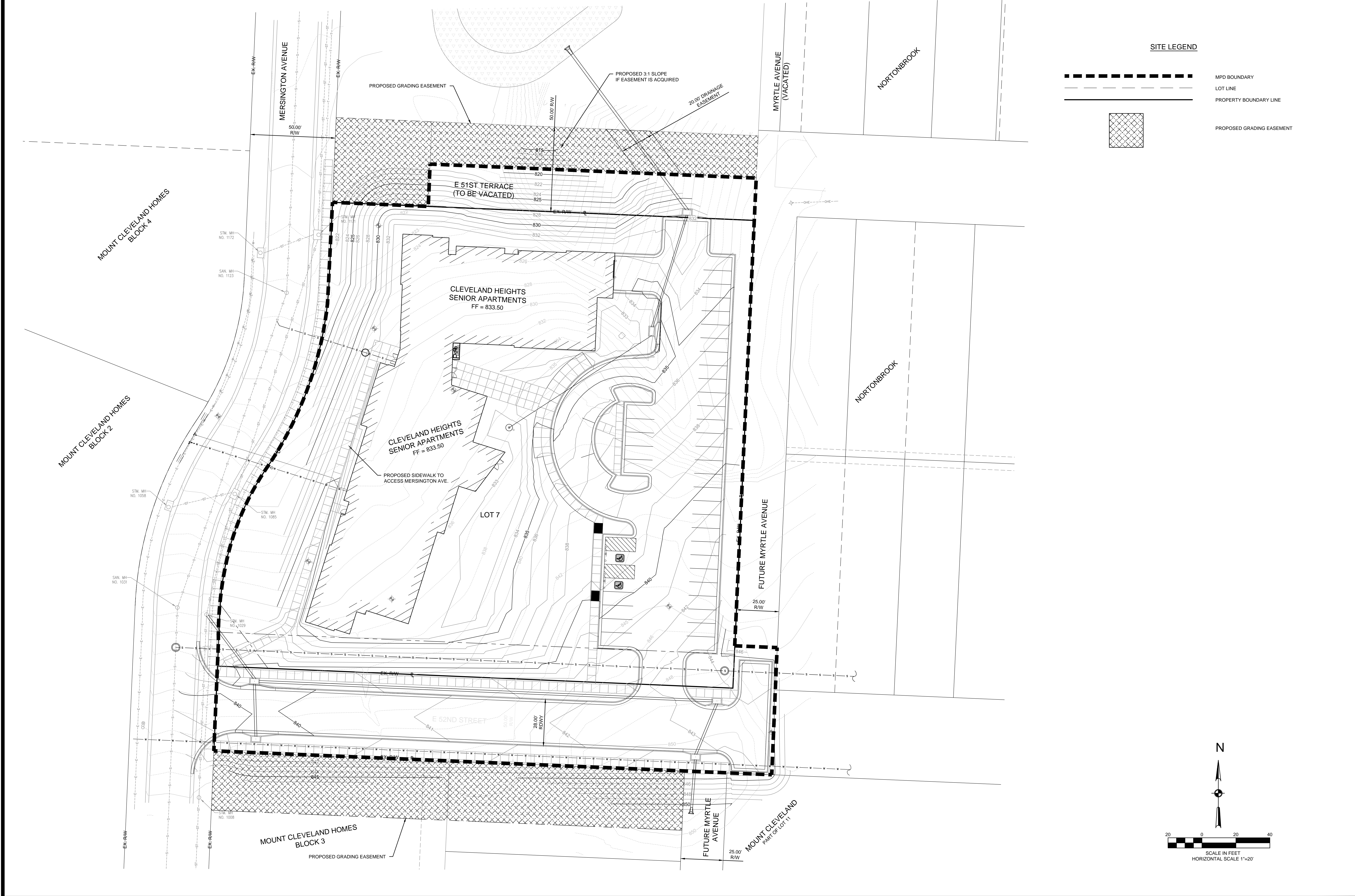



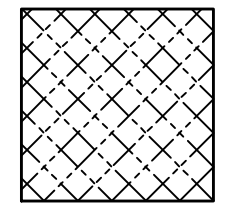



K:\Neb204-3220\Reznig\MCL_SITE_GRADING2.dwg, June/2015 3:43 PM



SITE LEGEND

-  MPD BOUNDARY
-  LOT LINE
-  PROPERTY BOUNDARY LINE
-  PROPOSED GRADING EASEMENT

N



20 0 20 40

SCALE IN FEET
HORIZONTAL SCALE 1"=20'

DATE	REVISIONS AND RECORD OF ISSUE	NO.	BY	CHK	APP
JUN 1, 2015	REVISION	1	LEN	KAM	LJK
MAR 20, 2015	MPD SUBMITTAL	1	LEN	KAM	LJK

T & B Project No. 04-3220	File Name: MCL_SITE_GRADING2.dwg
DESIGNED BY: LBN DRAWN BY: ME CHECKED BY: LGJ	DATE OF ORIGINAL ISSUE: 20 MAR 2015

LANDON BONE BAKER ARCHITECTS

734 N. Milwaukee Avenue Chicago, IL 60642 312-889-0100 www.landonbonebaker.com

vireo

Parti Banks Associates + Community Reimagined

bgr

Consulting Engineers

TB

Taliaferro & Browne, Inc.
Civil / Structural Engineering,
Landscape Architecture & Surveying
1020 E. 8th STREET
KANSAS CITY, MISSOURI 64106
PH (816) 283-3456 FAX (816) 283-0810
PROFESSIONAL ENGINEERING CORPORATION
MISSOURI LICENSE NO. 000466 KANSAS LICENSE NO. E-1481
PROFESSIONAL LAND SURVEYING CORPORATION
MISSOURI LICENSE NO. 000094 KANSAS LICENSE NO. LS-196

**CLEVELAND HEIGHTS
MPD DISTRICT
KANSAS CITY, MISSOURI**

SITE GRADING PLAN

DWG NO.:
C005

2012 Taliaferro & Browne, Inc.