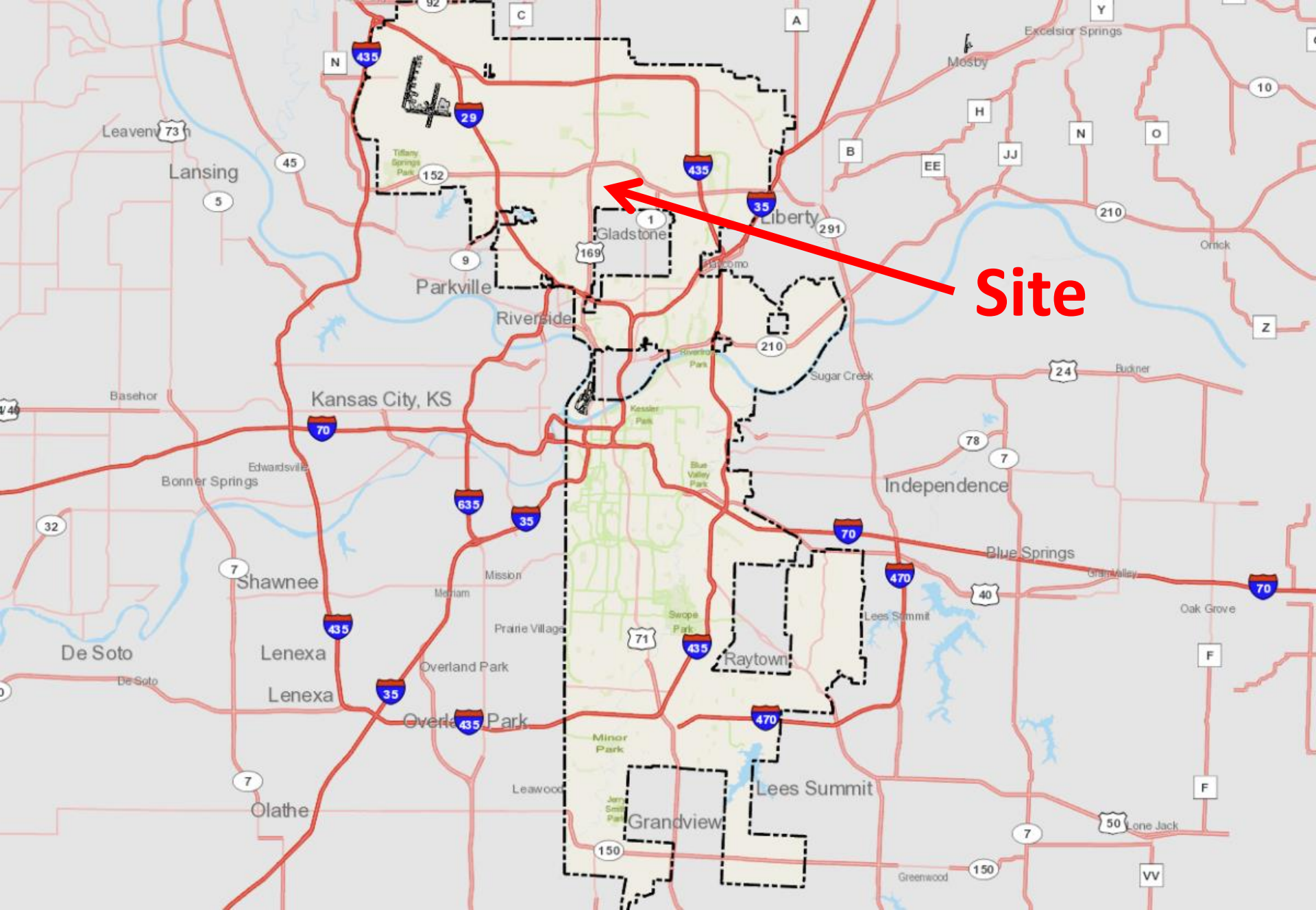


Docket # 8

Case No. CD-CPC-2022-00017
Development Plan (Residential)
88th & North Oak Apartments





Site





Case No. CD-CPC-2022-00017



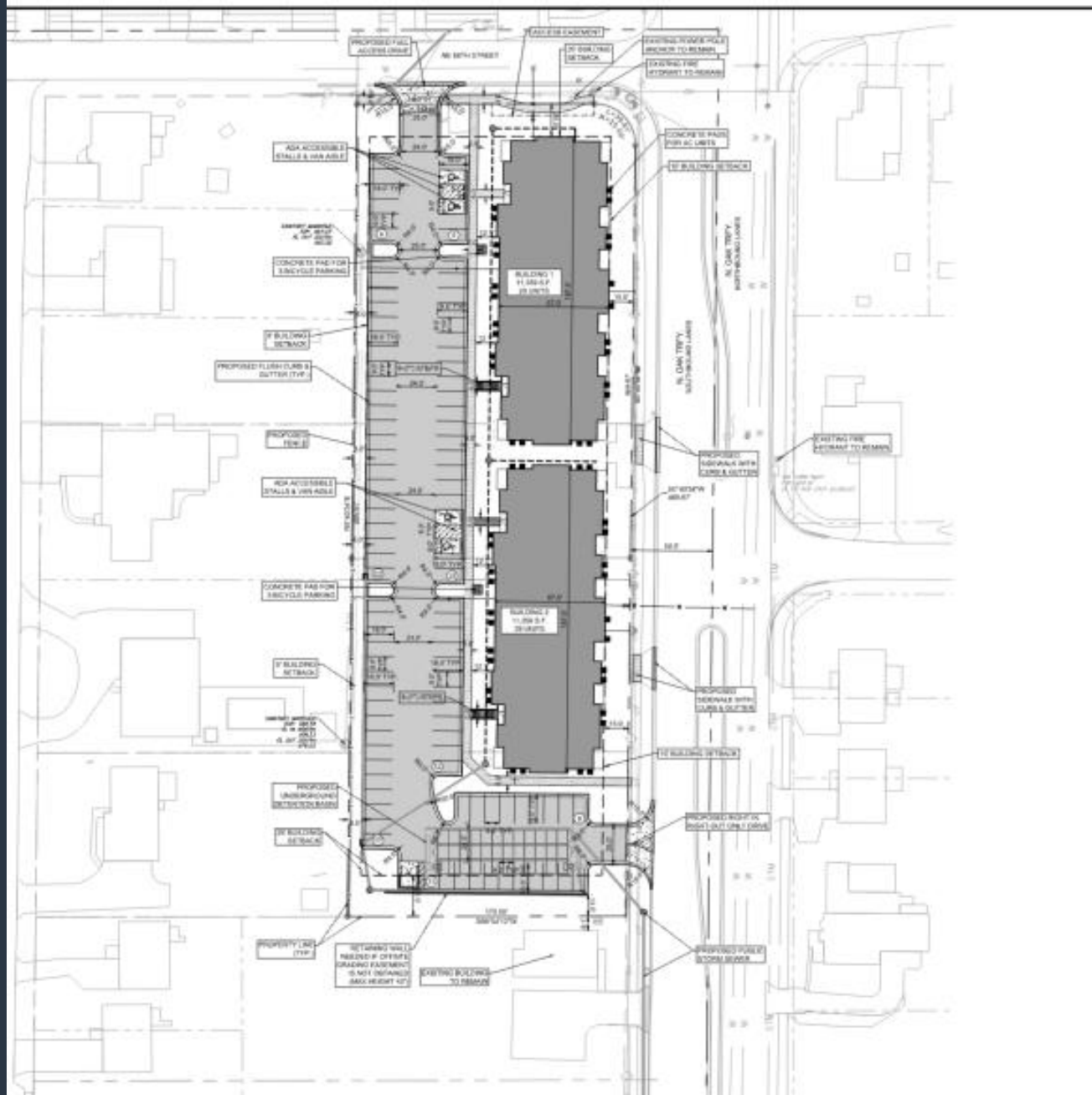
Case No. CD-CPC-2022-00017



View from N Oak

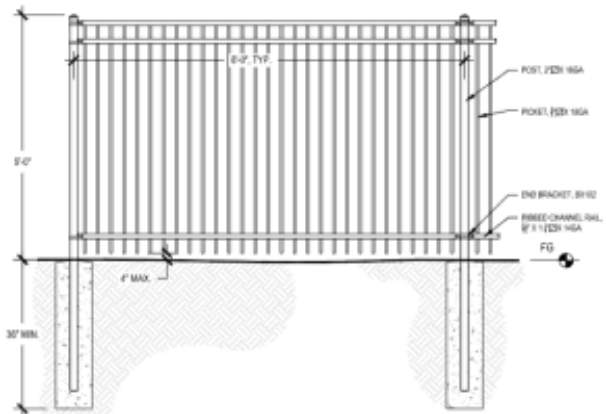
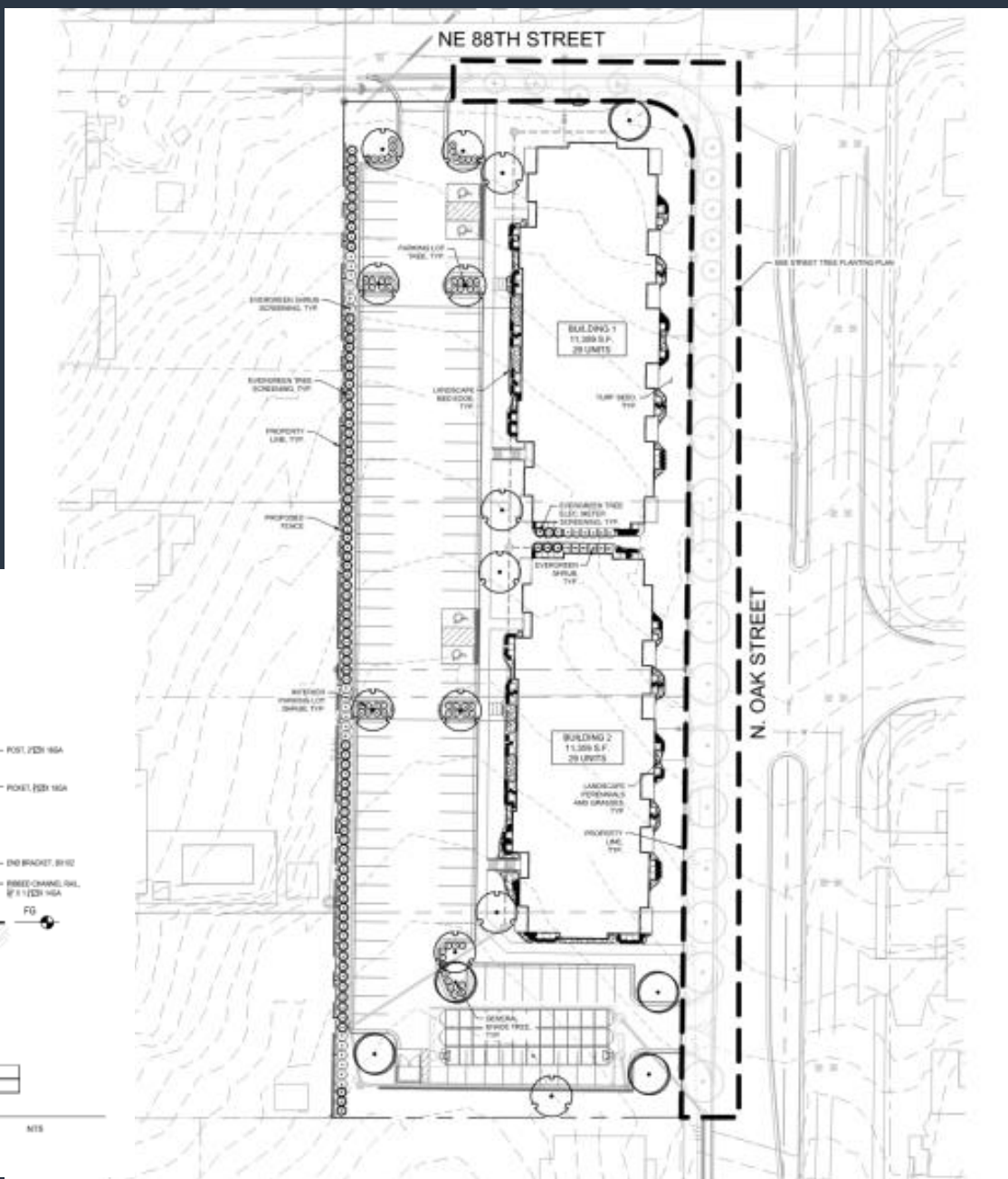
Case No. CD-CPC-2022-00017





Case No. CD-CPC-2022-00017

Site Plan



DETAIL	MANUFACTURER	MODEL	COLOR
FENCE	AMERICAN	MENTOR MAJESTIC 3.84A_V	BLACK

4

FENCE

MIS



MATERIAL KEY



CEMENTITIOUS LAP SIDING PAINTED TAN
CEMENTITIOUS BOARD AND BATT INSULATED GYPSI
MANUFACTURED STONE VENEER

KEY NOTES

- ① WHITE VINYL WINDOWS
- ② PREFABRICATED ALUMINUM BALCONY RAILS PAINTED BLACK
- ③ ALUMINUM STOREFRONT WINDOWS PAINTED BLACK
- ④ CEMENTITIOUS ROOF AND BALCONY PARAPETS
- ⑤ MECHANICAL EQUIPMENT LOCATED AT GRADE



③ NORTH
18' x 1'-0"



④ SOUTH
18' x 1'-0"



② EAST (FRONT)
18' x 1'-0"



① WEST (BACK)
18' x 1'-0"





FROM STREET LOOKING NORTH WEST



FROM PARKING LOOKING SOUTHEAST



Staff Recommendation:

Case No. CD-CPC-2022-00017

Approval with conditions

