

**Docket #9**

**CD-CPC-2023-00152**

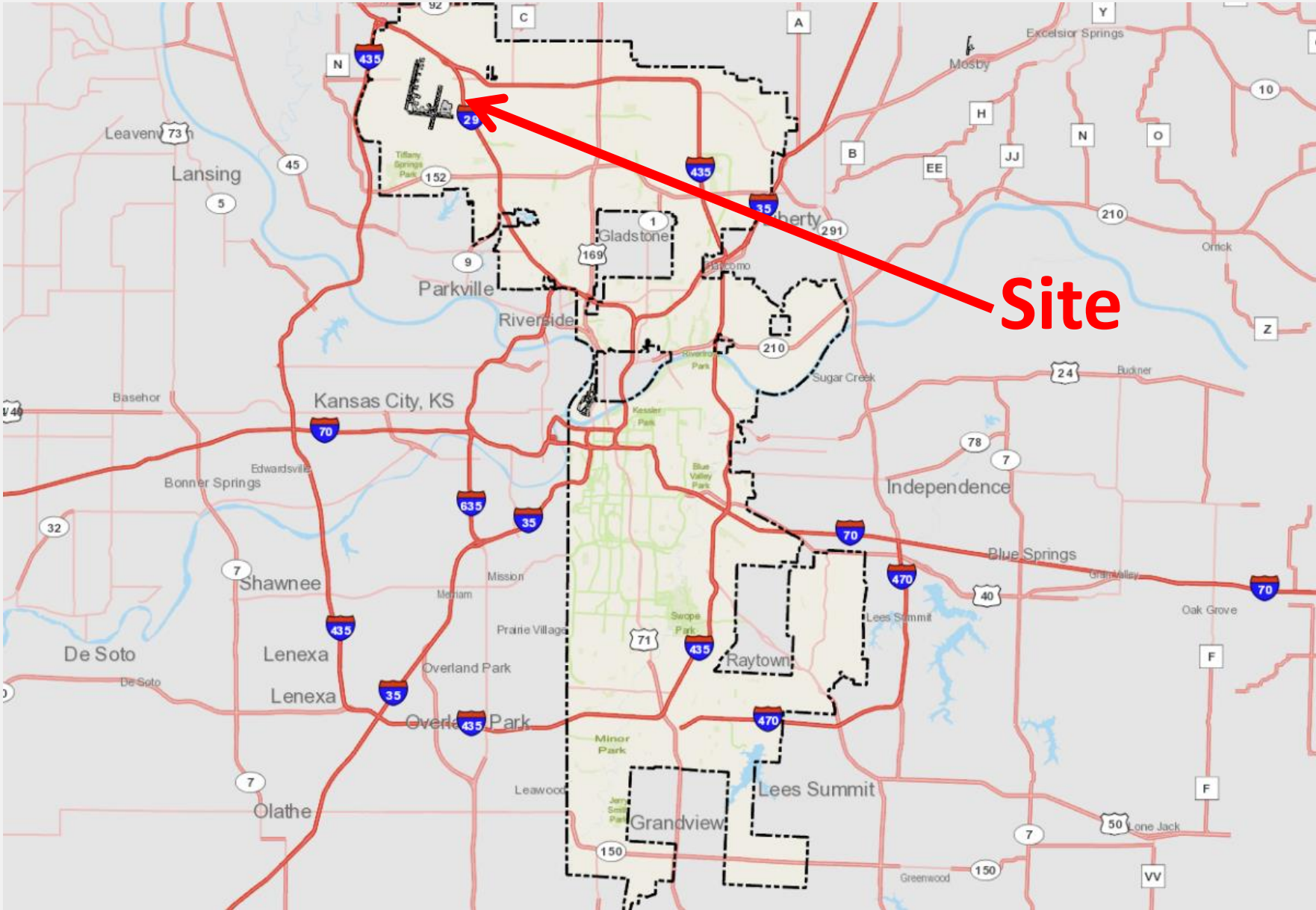
**Development Plan – Non-Residential**

Courtyard by Marriott at KCI  
11301 N. Newark Circle

11-7-2023

City Plan Commission





- ~ 5.1 acres
- B3-3 zoning
- Adjacent to KCI
- Proposed two phases
- 140 rooms (Phase I)

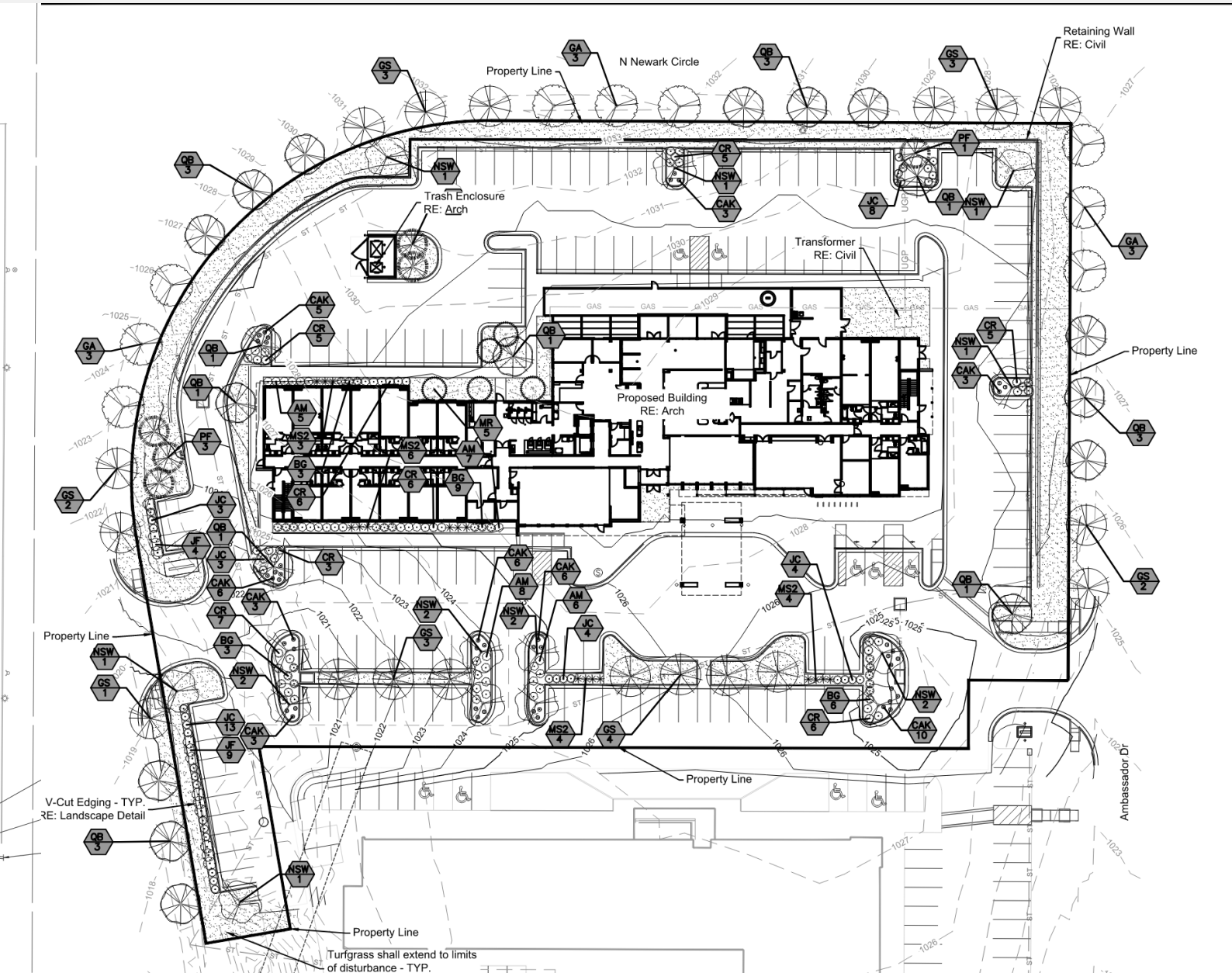
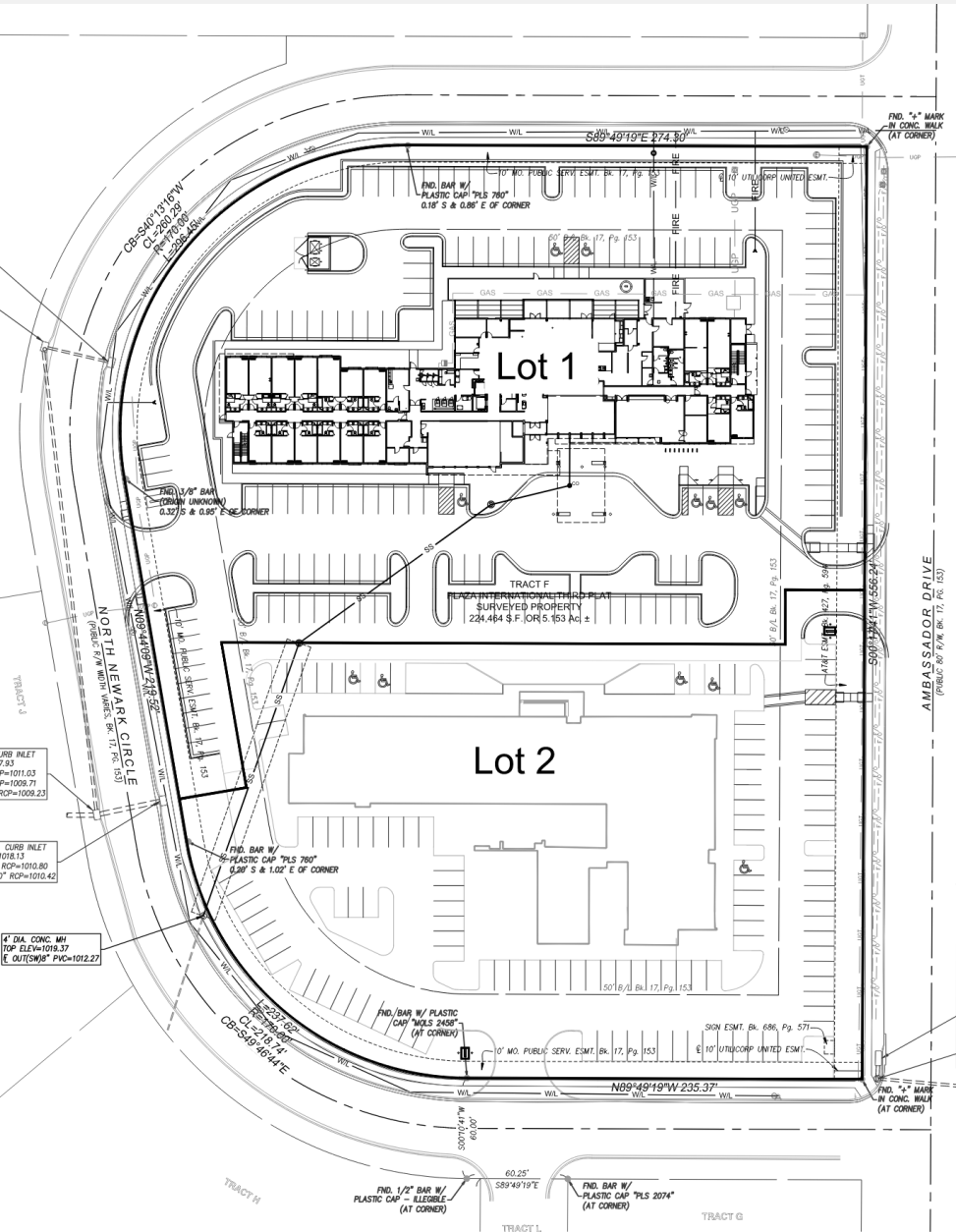




**View looking southwest from N. Ambassador Drive**



**View looking northwest from N. Ambassador Drive**





# Staff Recommendation

**Case No. CD-CPC-2023-00152**

Development Plan – Non-Residential

**- Approval with Conditions**