



Ordinance #240327

Arterial Impact Fee

Nicolas Bosonetto, PE – City Engineer PW

Aaron Schmidt – Hunt Midwest



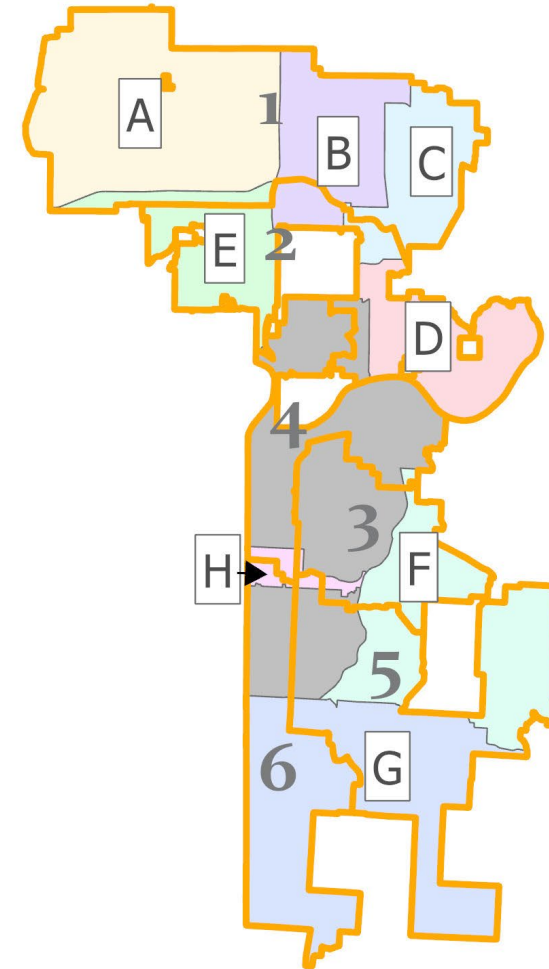
KANSAS CITY
Public Works



Arterial Impact Fees



- Impact Fee Advisory Committee
 - Met on February 5th, 2024
 - District A - \$1.9M balance
 - Attended by developers, councilmembers, PW, CPD, Economic Development:
 - Gary Hayes, MD Management
 - Aaron Schmidt, Hunt Midwest
 - Aaron Young, Hunt Midwest
 - Nathan Willett, District 1 Council
 - Terry Thomas, LDD
 - Todd LaTorella, PW
 - Noah Chapin, CPD
 - James Wang, Parks
 - Gerald Williams, CPD
 - Jenny Johnston, Northland Chamber
 - Andrew, Windfield Real Estate



KCI 29 LOGISTICS PARK

3,300-ACRE MASTER PLANNED MEGA SITE | KANSAS CITY, MISSOURI

KEY FEATURES:

- 20M+ SF class A industrial space
- Centrally located in logistics epicenter of U.S.
- Excellent access to I-29, I-435, I-70, and I-35
- Last stop for FedEx, UPS, and USPS
- Access to mega site and KCI Air Cargo via full Mexico City Avenue Interchange
- Fully entitled for manufacturing, **distribution, e-commerce, office,** technology, and similar industries
- On-site utilities include:
 - 345kV & 161kV power
 - Transmission water line
 - Wastewater treatment plant
- Lease, build-to-suit, and land-sale options



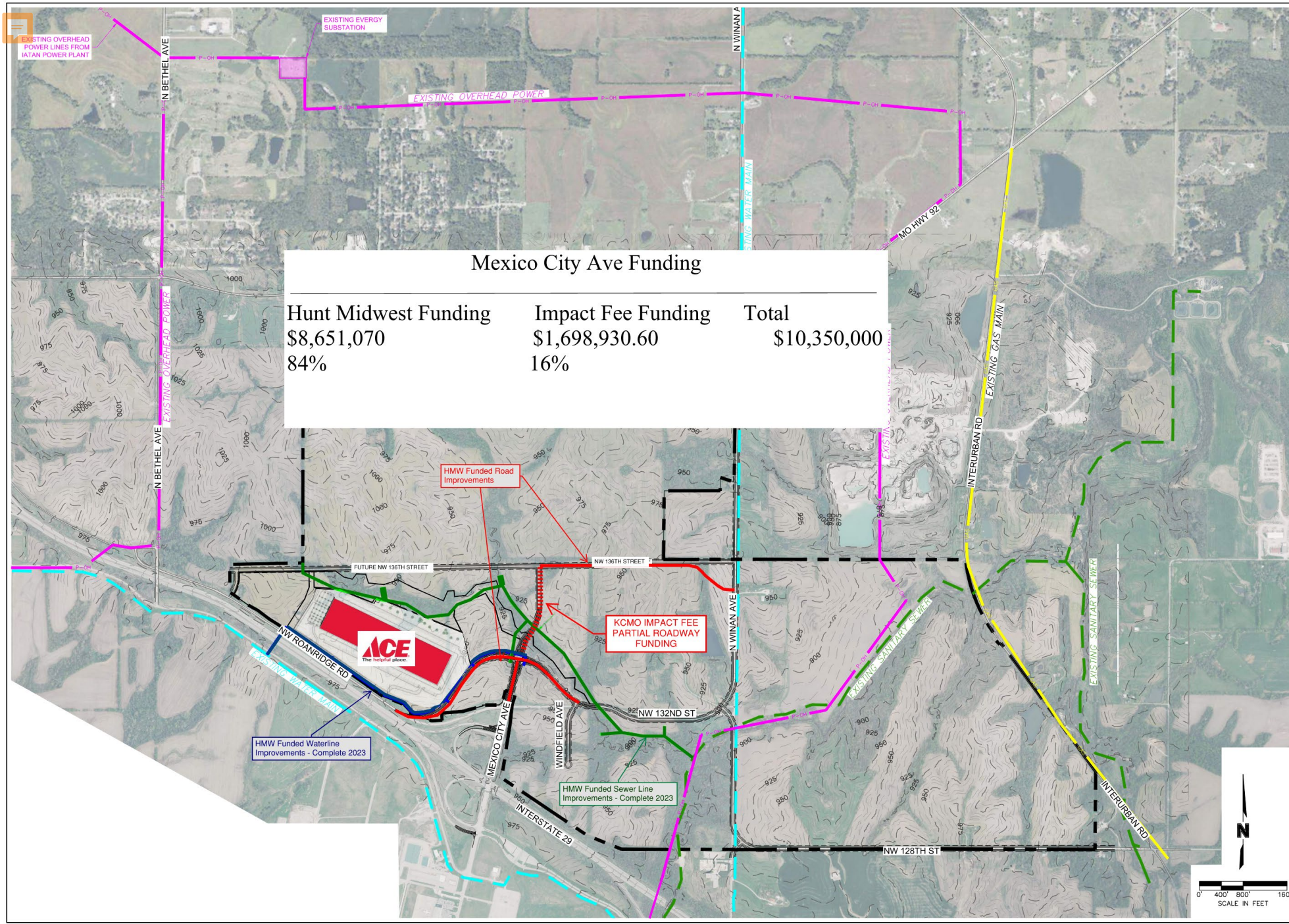
North
Mexico
City Ave

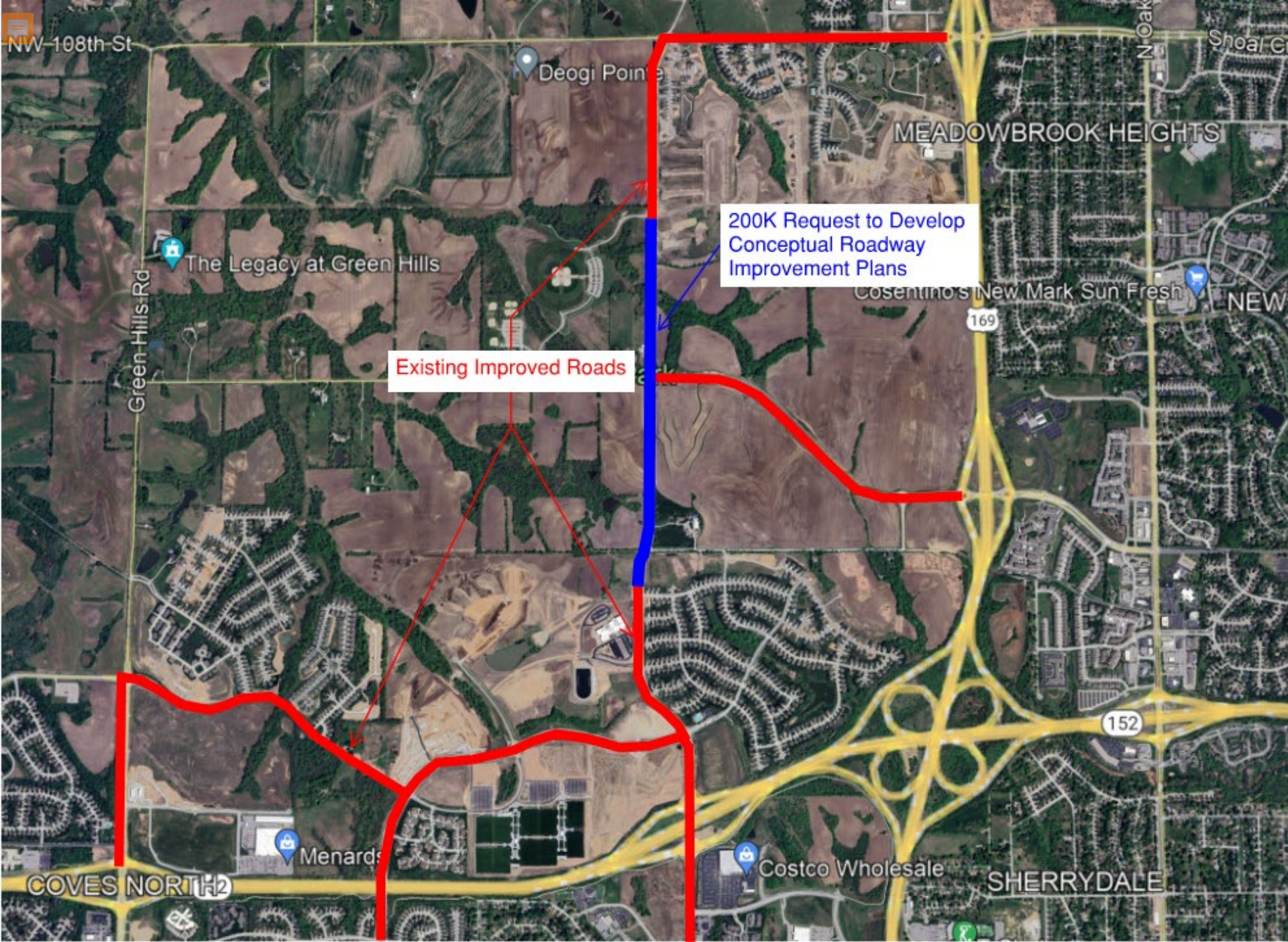


Mexico City Ave Funding

Hunt Midwest Funding	Impact Fee Funding	Total
\$8,651,070	\$1,698,930.60	\$10,350,000
84%	16%	

\$1.7M
North
Mexico
City Ave





200K Request to Develop
Conceptual Roadway
Improvement Plans

Existing Improved Roads

\$200k
Platte
Purchase
Drive