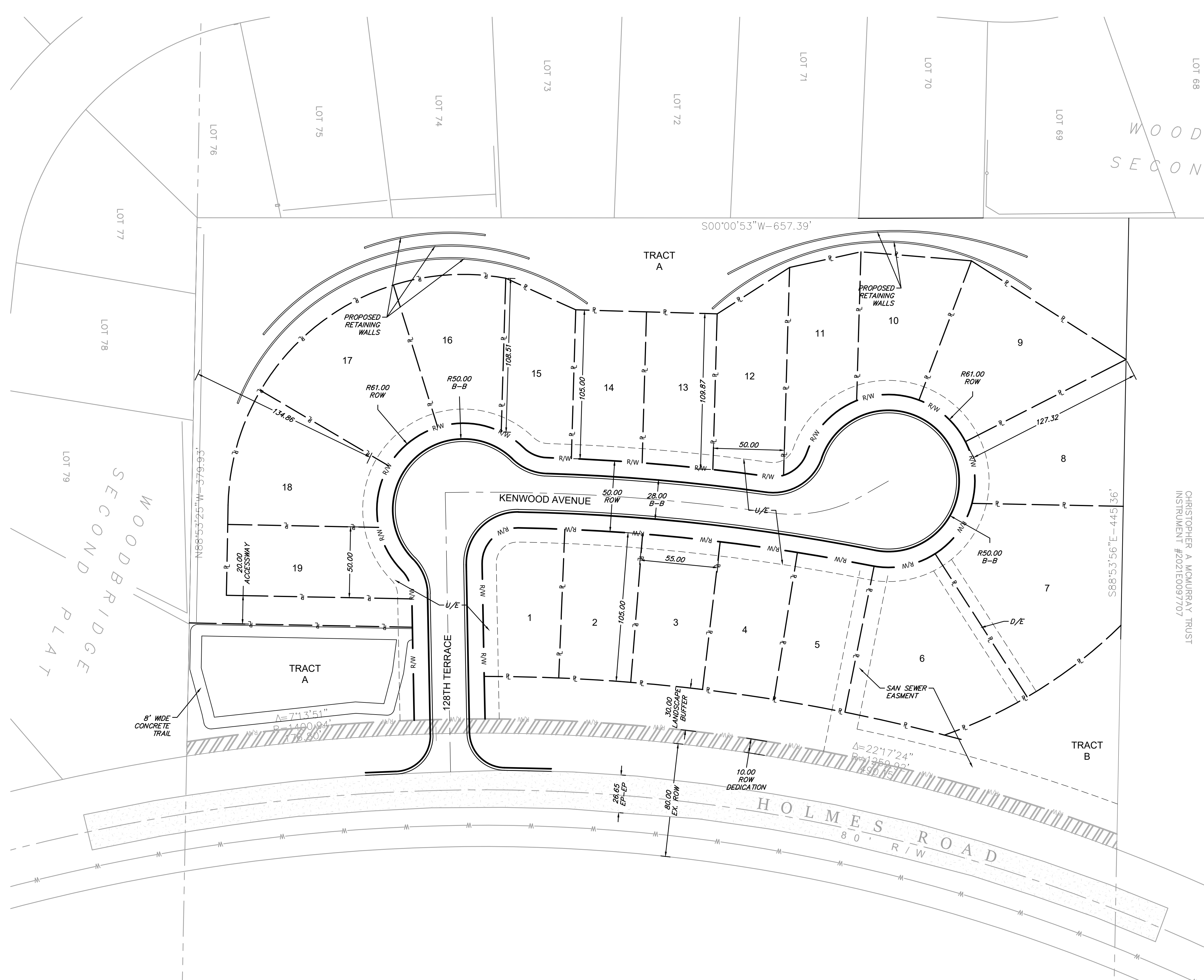


Aug 12, 2022 3:33pm Plotted By: pmos G:\Shared drives\KC10 - Land Development\Projects\2022\22KC10005 Umeview Development (12800 Holmes Road)\01_Civil\03-DWG\Sheet\22KC10005_SIT_SITE.dwg Layout: Arch D 36x24

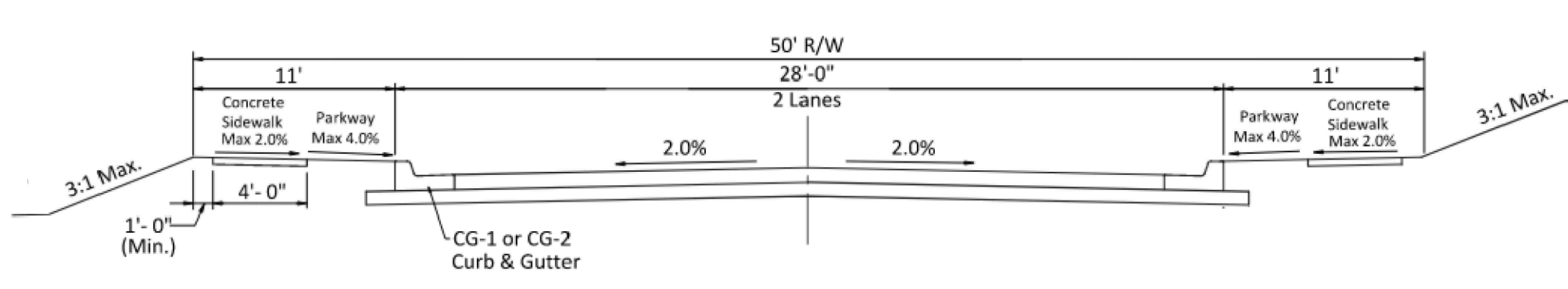


SITE DATA	Existing	Proposed	Deviation Requested?	Approved	Notes
Zoning	O-2	R-5	No		
Gross Land Area in acres	5.79	5.79	N/A		
Right-of-Way Dedication in acres	N/A	1.02	N/A		
Net Land Area in acres	5.79	4.77			
Building Area in SF	N/A	28,500			1,500 anticipated per unit
in acres	N/A	0.65			
Floor Area Ratio	N/A	0.14			
Residential Use Info					
Total Dwelling Units	N/A	19			
Total Lots					
Residential	N/A	19			
Other	N/A	2			Basins

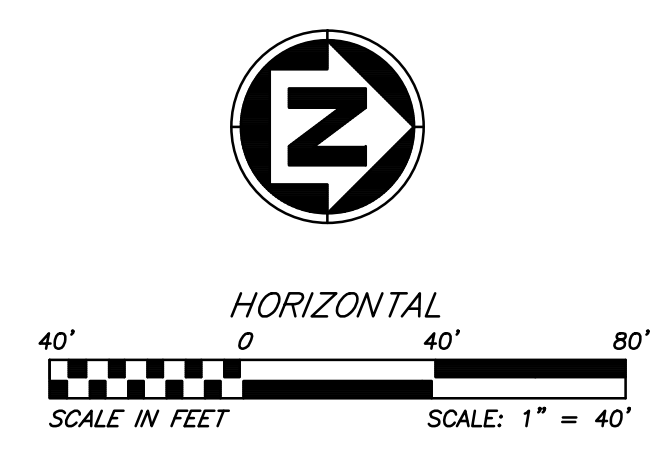
88-425 - OTHER DEVELOPMENT STANDARDS	Method of Compliance
88-408 Parkland Dedication	0.422 acres req'd; sufficient credit with 390 feet of proposed trail
88-430 Outdoor Lighting	Std. Street Lighting
88-435 Outdoor Display, Storage & Work Areas	N/A
88-450 Pedestrian Standards	Sidewalks on both sides of internal streets

LOT SIZE TABLE		
Lots	Square Feet	Acres
1	5710	0.131
2	5560	0.128
3	5560	0.128
4	5560	0.128
5	5560	0.128
6	10309	0.237
7	12475	0.286
8	8017	0.184
9	9141	0.210
10	6134	0.141
11	6165	0.142
12	6465	0.148
13	5399	0.124
14	5282	0.121
15	5529	0.127
16	6612	0.152
17	8792	0.202
18	7552	0.173
19	5968	0.137
TRACT A	57513	1.320
TRACT B	19860	0.456

BUILDING DATA	Required	Proposed	Deviation Requested?	Approved
Rear Setback	30'	10'	Yes	
Front Setback	25'	25'	No	
Side Setback	5'	5'	No	
Side Setback (abutting street)	15'	15'	No	
Height	35'	30' max	No	



TYPICAL SECTION (RESIDENTIAL/LOCAL)



ANDERSON ENGINEERING
EMPLOYEE OWNED

ENGINEERS • SURVEYORS • LABORATORIES • DRILLING
941 W 141ST TERR. STE. A • KANSAS CITY, MO 64145 • PHONE (816) 777-0490
A LICENSED MISSOURI ENGINEERING & SURVEYING CORPORATION • LC 62

REVISIONS		DRAWING INFO.	
NO.	DESCRIPTION	DATE	BY
1	DESCRIPTION	DATE	BY
2	DRC COMMENTS	DATE	BY
	CITY COMMENTS	DATE	BY

DRAWN BY: PJM	CHECK BY: PJM	LICENSE NO.:	DATE:	ISSUED FOR: FOR REVIEW
22KC10005	22KC10005	22KC10005	04/18/22	22KC10005

LIMEVIEW DEVELOPMENT

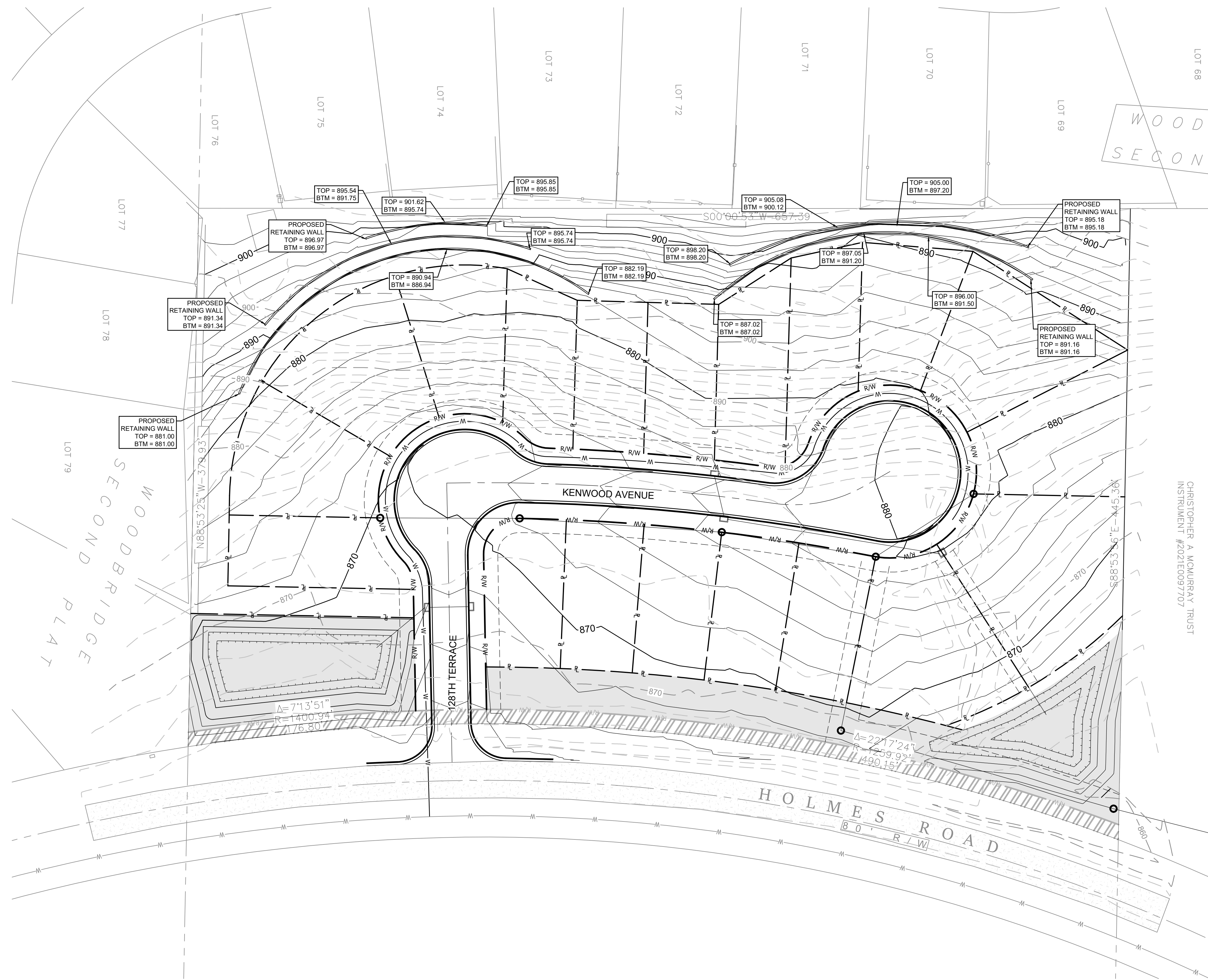
SITE PLAN/PRELIM. PLAT

12800 HOLMES ROAD, KANSAS CITY, MISSOURI

STATE OF MISSOURI
PAUL J. MOSS
NUMBER PE-2014025902
8/12/22
PROFESSIONAL ENGINEER

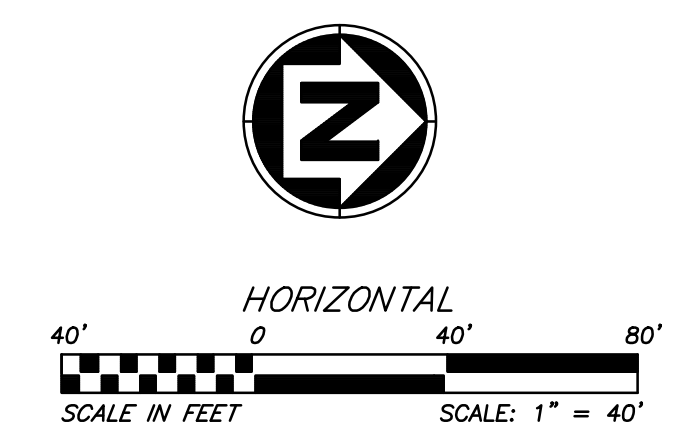
SHEET NUMBER
C1.10
OF

Aug 12, 2022 3:47pm Plotted By: pmoos G:\Shared drives\KC10 - Land Development\Projects\22KC10005 Umeview Development (12800 Holmes Road)\01_Civil\03-DWG\Sheet\22KC10005_SFT_GRAD.dwg Layout: Arch D_36x24



CHRISTOPHER A. MCMAURRAY TRUST
INSTRUMENT #2021E0097707

- LEGEND**
- 980 — FINISH GRADE 10' CONTOURS
 - 982 — FINISH GRADE 2' CONTOURS
 - - - 980 - - - EXISTING GRADE 10' CONTOURS
 - - - 982 - - - EXISTING GRADE 2' CONTOURS



REVISIONS		DRAWING INFO.	
NO.	DESCRIPTION	BY	DATE

DRAWN BY:	PJM
CHECK BY:	PJM
LICENSE NO.:	
DATE:	04/19/22
ISSUED FOR:	FOR REVIEW
JOB NUMBER:	22KC10005

LIMEVIEW DEVELOPMENT

GRADING PLAN

12800 HOLMES ROAD, KANSAS CITY, MISSOURI



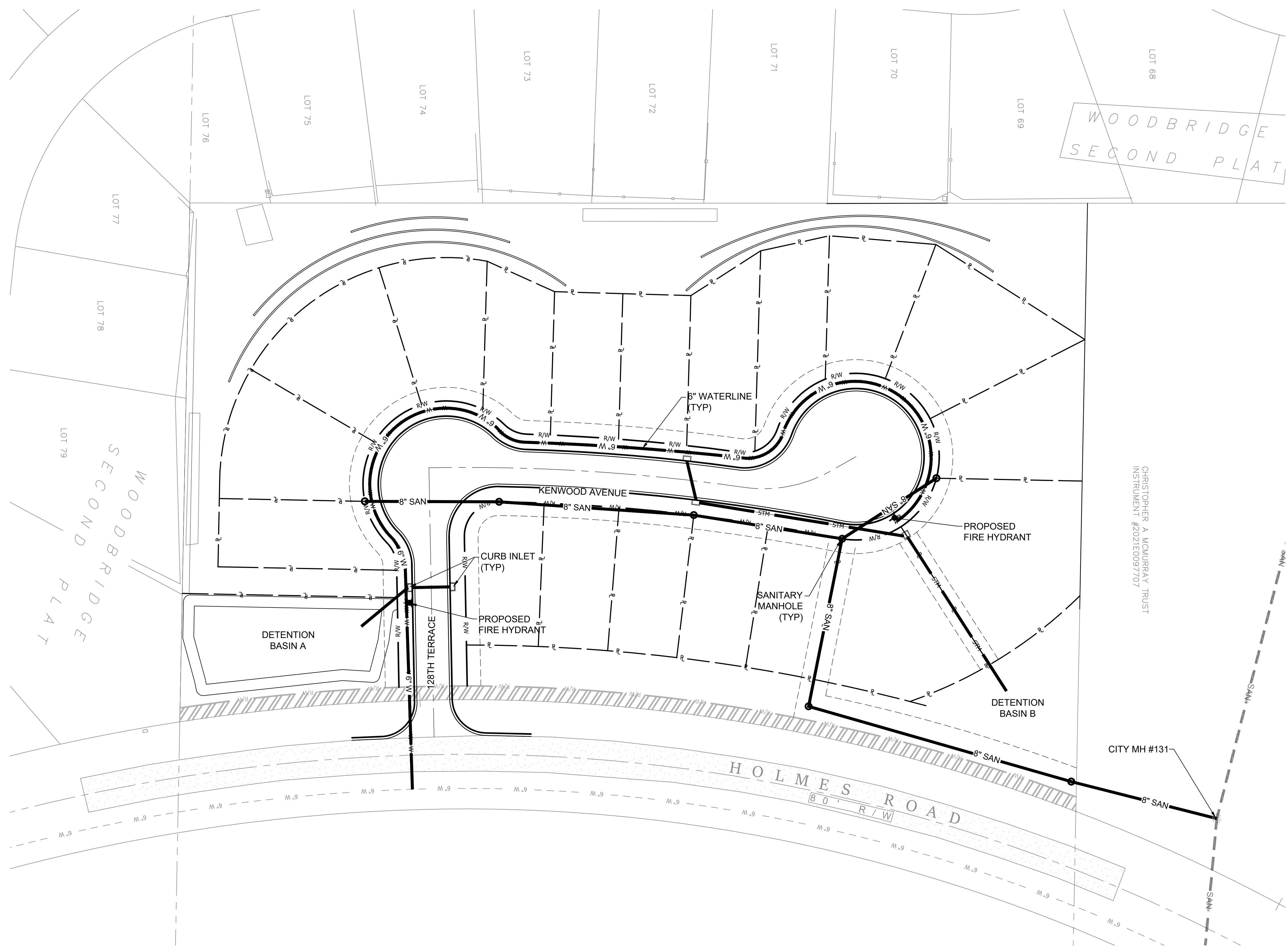
SHEET NUMBER
C1.20
OF

ANDERSON ENGINEERING
EMPLOYEE OWNED

AE

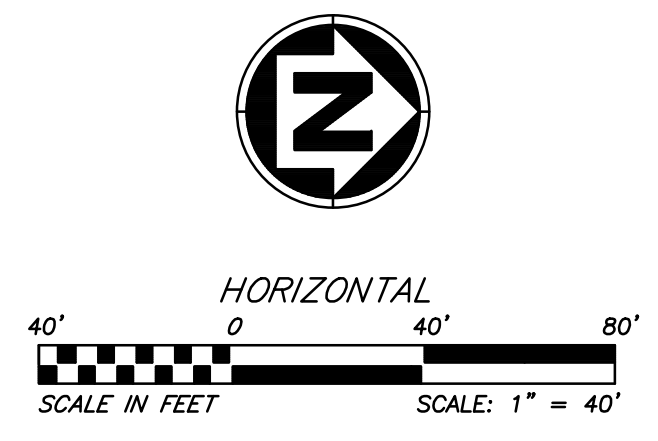
ENGINEERS • SURVEYORS • LABORATORIES • DRILLING
941 W 141ST TERR. STE. A • KANSAS CITY, MO 64145 • PHONE (816) 777-0400
A LICENSED MISSOURI ENGINEERING & SURVEYING CORPORATION • LC 62

Aug 12, 2022 3:42pm Plotted By: pmoos G:\Shared drives\KC10 - Land Development\Projects\2022\22KC10005 Limeview Development (12800 Holmes Road)\01_Civil\03-DWG\Sheet\22KC10005_SFT_UTIL.dwg Layout: Arch D 36x24



CHRISTOPHER A. MOURRAY TRUST
INSTRUMENT #2021E0097707

- LEGEND**
- 6" W --- EXISTING WATER LINE
 - SAN --- EXISTING SANITARY SEWER LINE
 - 6" W — PROPOSED WATER LINE
 - 8" SAN — PROPOSED SANITARY SEWER LINE
 - STM — PROPOSED STORM SEWER LINE



LIMEVIEW DEVELOPMENT

UTILITY PLAN

12800 HOLMES ROAD, KANSAS CITY, MISSOURI



SHEET NUMBER
C1.30
OF

REVISIONS		DRAWING INFO.	
NO.	DESCRIPTION	BY	DATE
1	DRC COMMENTS	PJM	8/3/22
2	CITY COMMENTS	PJM	8/12/22

BY	DATE	DRAWN BY	PJM
PJM	8/3/22	CHECK BY:	PJM
PJM	8/12/22	LICENSE NO.:	041822
		ISSUED FOR:	FOR REVIEW
		JOB NUMBER:	22KC10005

ANDERSON ENGINEERING
EMPLOYEE OWNED

ENGINEERS • SURVEYORS • LABORATORIES • DRILLING
941 W 141ST TERR. STE A • KANSAS CITY, MO 64145 • PHONE (816) 777-0490
A LICENSED MISSOURI ENGINEERING & SURVEYING CORPORATION • LC 62