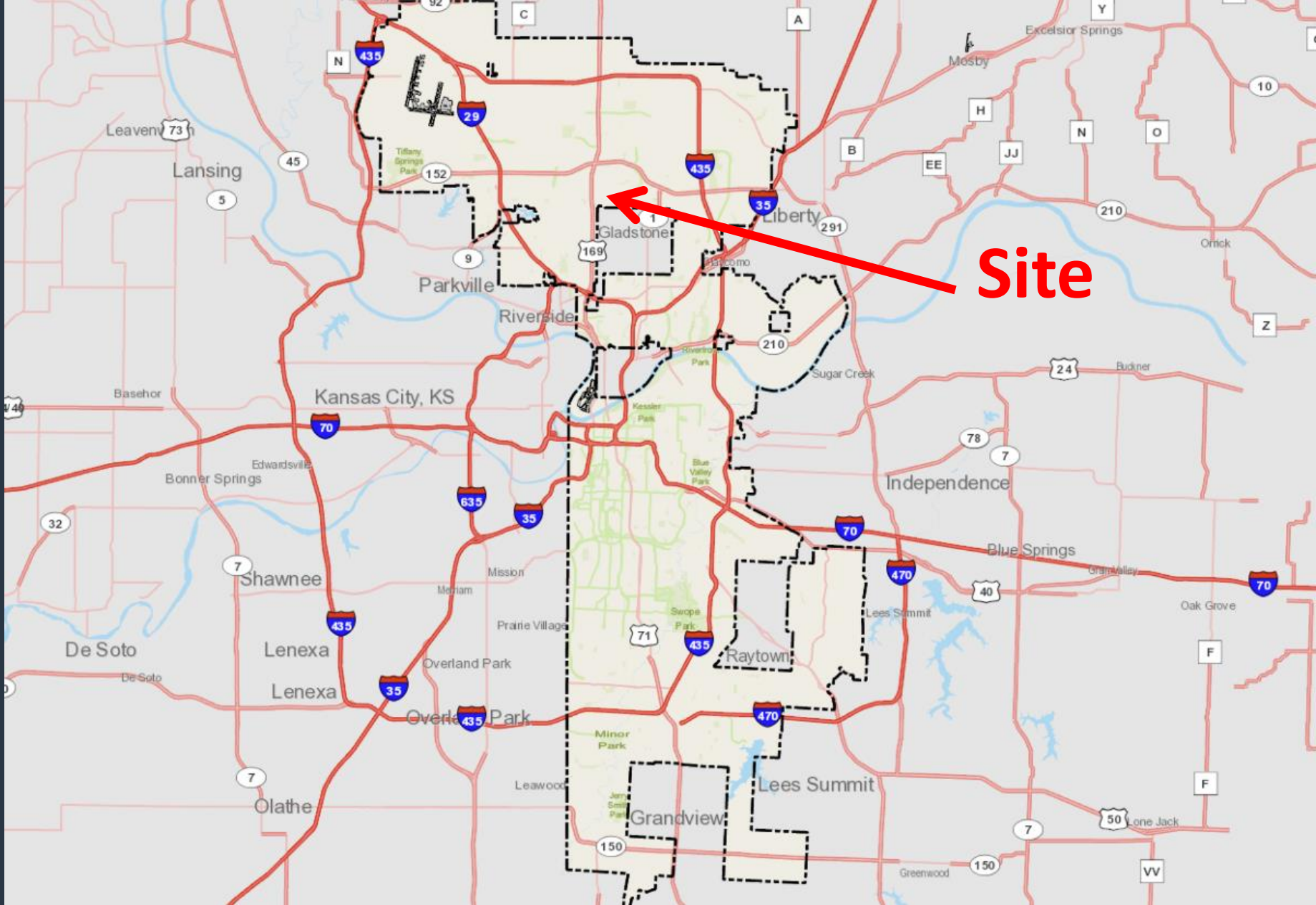


Docket # 3

Case No. CD-CPC-2022-00119
Major Amendment –
Development Plan

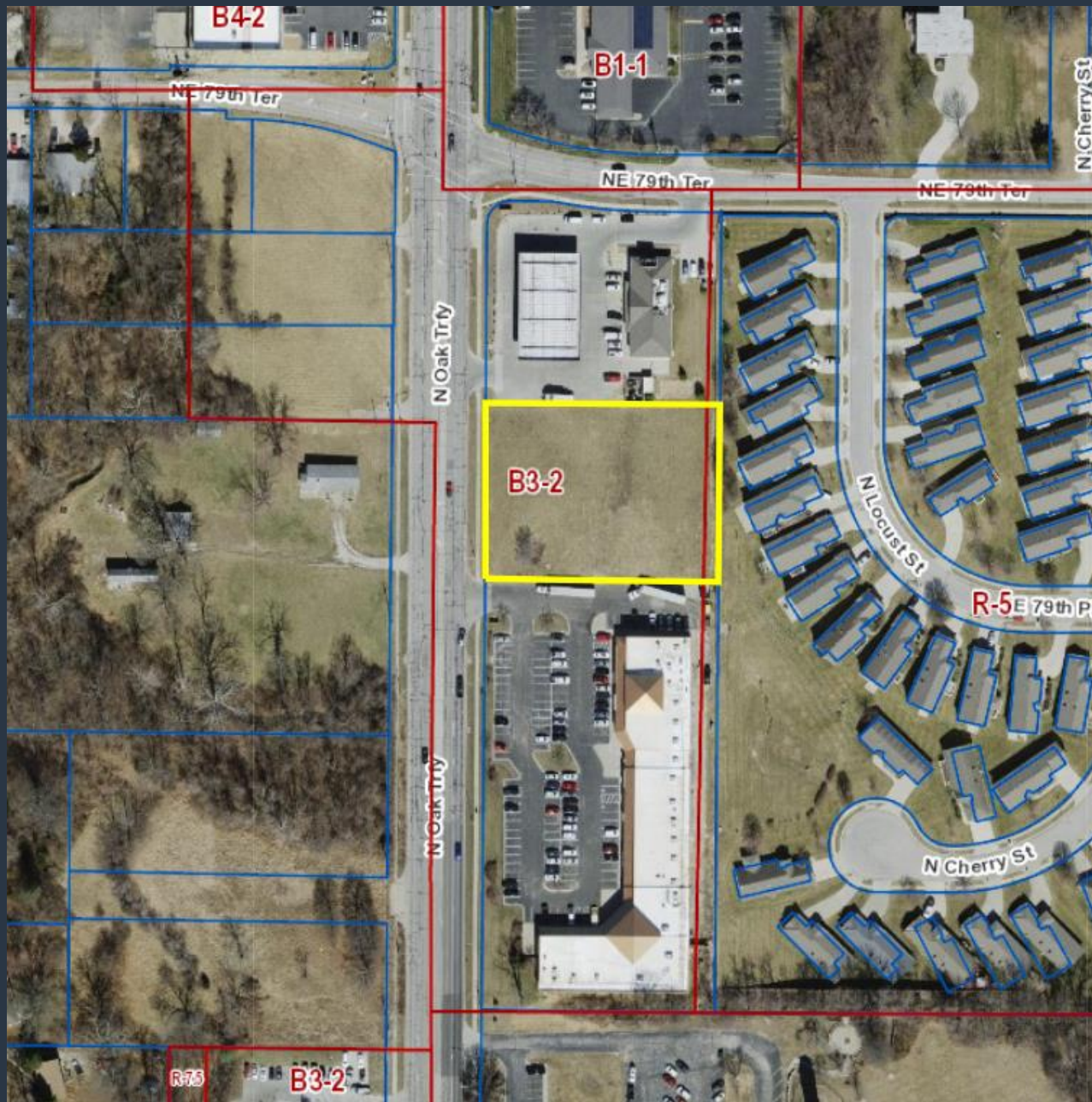
Express Oil Change



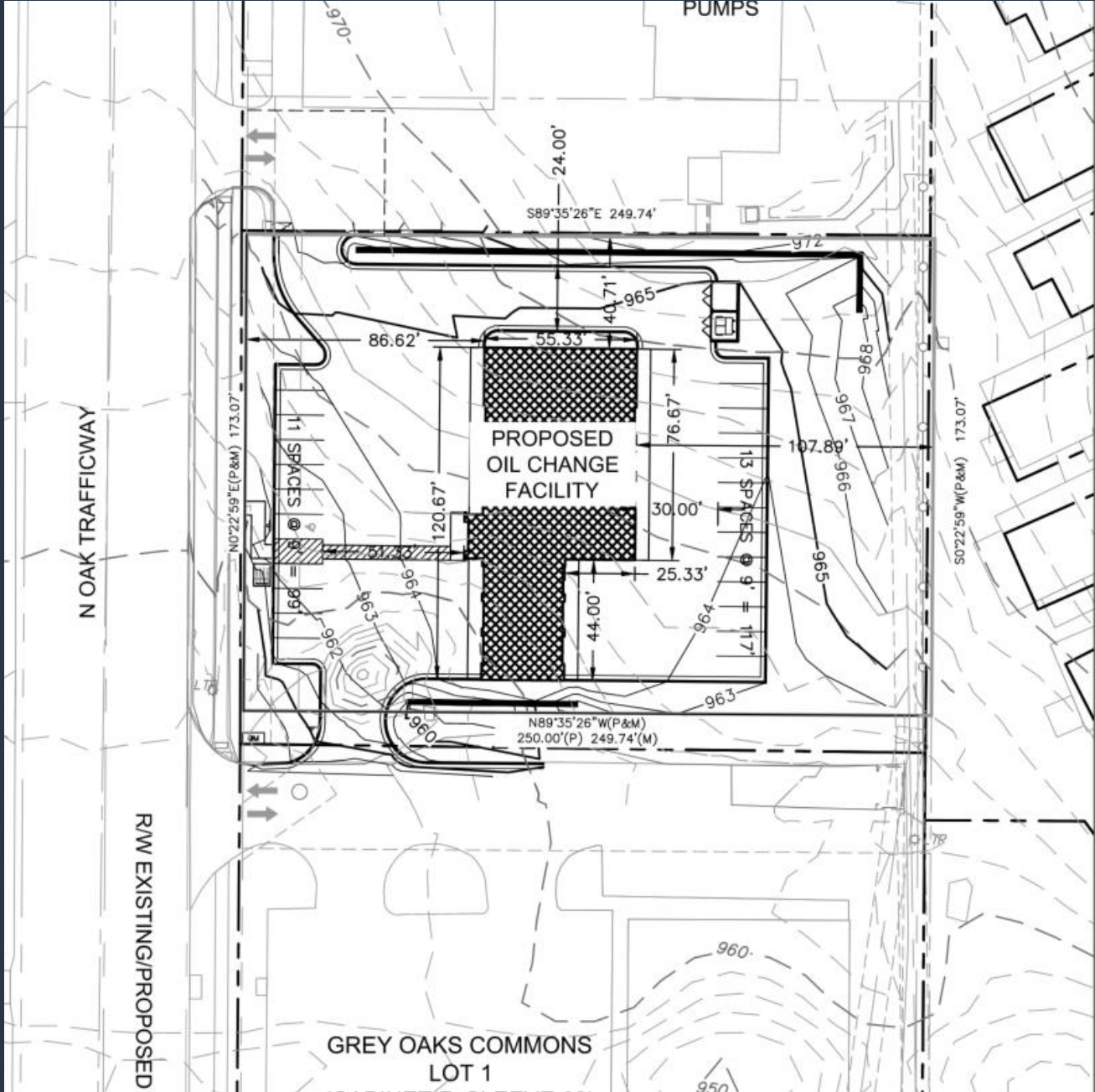


Site





Case No. CD-CPC-2022-00119



N OAK TRAFFICWAY

R/W EXISTING/PROPOSED

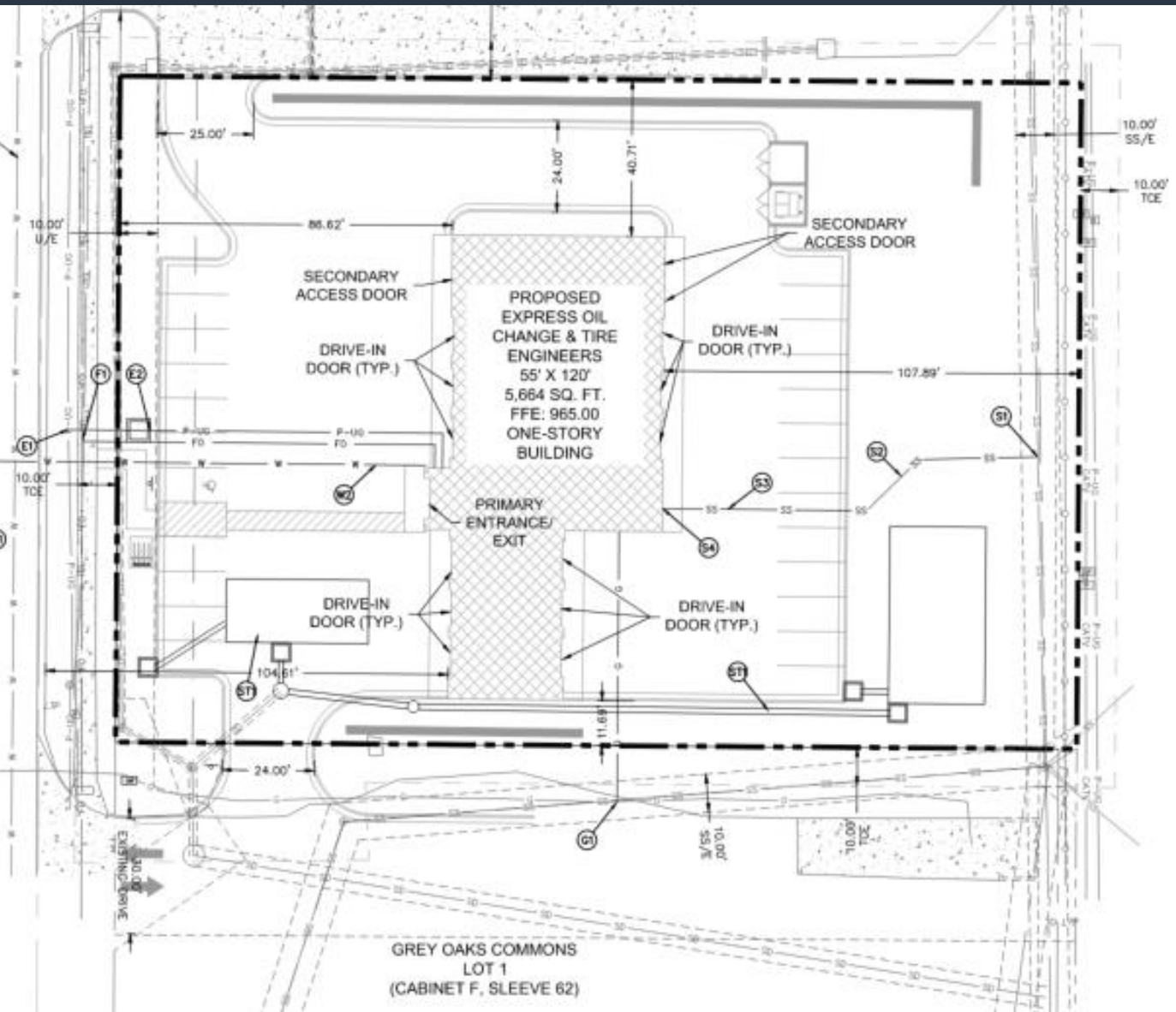
GREY OAKS COMMONS
LOT 1

PUMPS

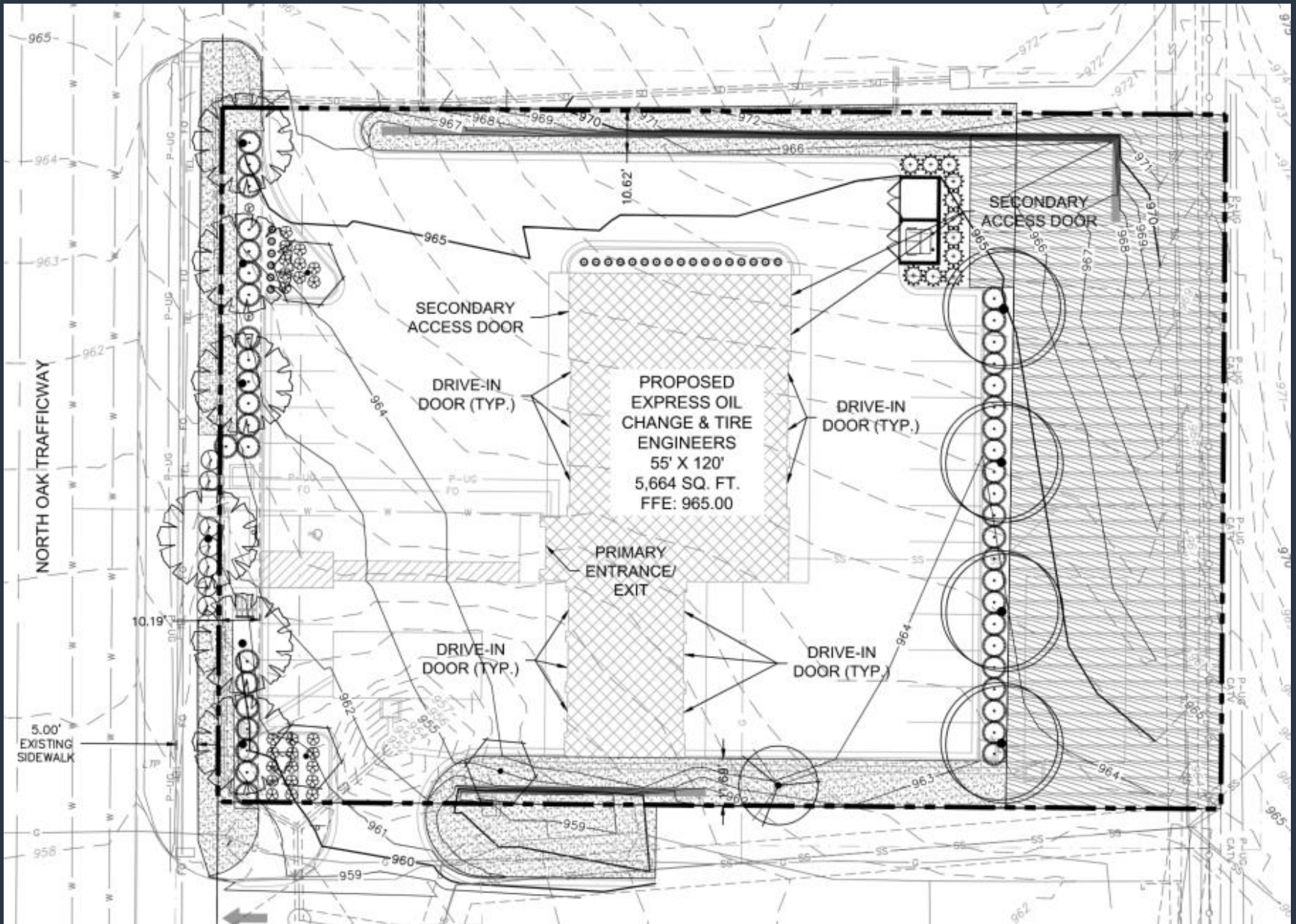


8" PUBLIC WATER MAIN
16" PUBLIC WATER MAIN

NORTH OAK TRAFFICWAY
(WIDTH VARIES - PUBLIC ROW)



Case No. CD-CPC-2022-00119





MATERIAL LEGEND

				
Wall Base: Painted Spill-faced CMU Sherwin Williams Color: SW 7059 Summit Gray	Wall Field: Unpainted Structural Half High Quik-Brick Color: Richfield	Wall Accent: Painted Structural Half High Sherwin Williams Color: SW6566 Blackblood	Roof: Bentlage Standing Seam Metal Roof Color: Royal Blue	Storefront: YKK Color: Clear Anodized



Development / Plot Information
 Gray Oaks Commerce
 Lot 3, Tract B

Prepared by:
 Aho Architects, L.L.C.
 200 Riverbend Pkwy., E. Ste. 200
 Hoover, AL 35226
 Aahr@ahoarch.com

Front Elevation (Facing N Oak Trfy)



Interior wall panels on view of building that contains illuminated lightbars or sconces by others, unless at exit doors as indicated on the Electrical Drawings.



1-02: Rear Elevation
3/16" = 1'-0"

MATERIAL LEGEND

				
Wall Base: Painted Split-faced CMU	Wall Field: Unpainted Structural Half-Highs	Wall Accent: Painted Structural Half Highs	Roof: Beam/edge Standing Seam Metal Roof	Storefront: YKK
Sherwin Williams Color: SW 7669 Summit Gray	Quik-Brick Color: Richfield	Sherwin Williams Color: SW6099 Blueblood	Color: Royal Blue	Color: Clear Anodized



Developed / For Information
Over Oaks Gardens
Lot 3, Unit B

Designed prepared by
A&A Architects, LLC
200 Riverchase Pkwy, E. Ste. 204
Houston, TX 77058
A&A@aarchitect.com

Rear Elevation



Case No. CD-CPC-2022-00119



View looking east from N Oak Trfy



Case No. CD-CPC-2022-00119

Staff Recommendations:

Case No. CD-CPC-2022-00119

Approval with conditions