

Case Number

CD-CPC-2023-00146

Major Amendment of MPD Plan

Southeast Corner of Northwest 96th Street and Highway 169

November 7, 2023

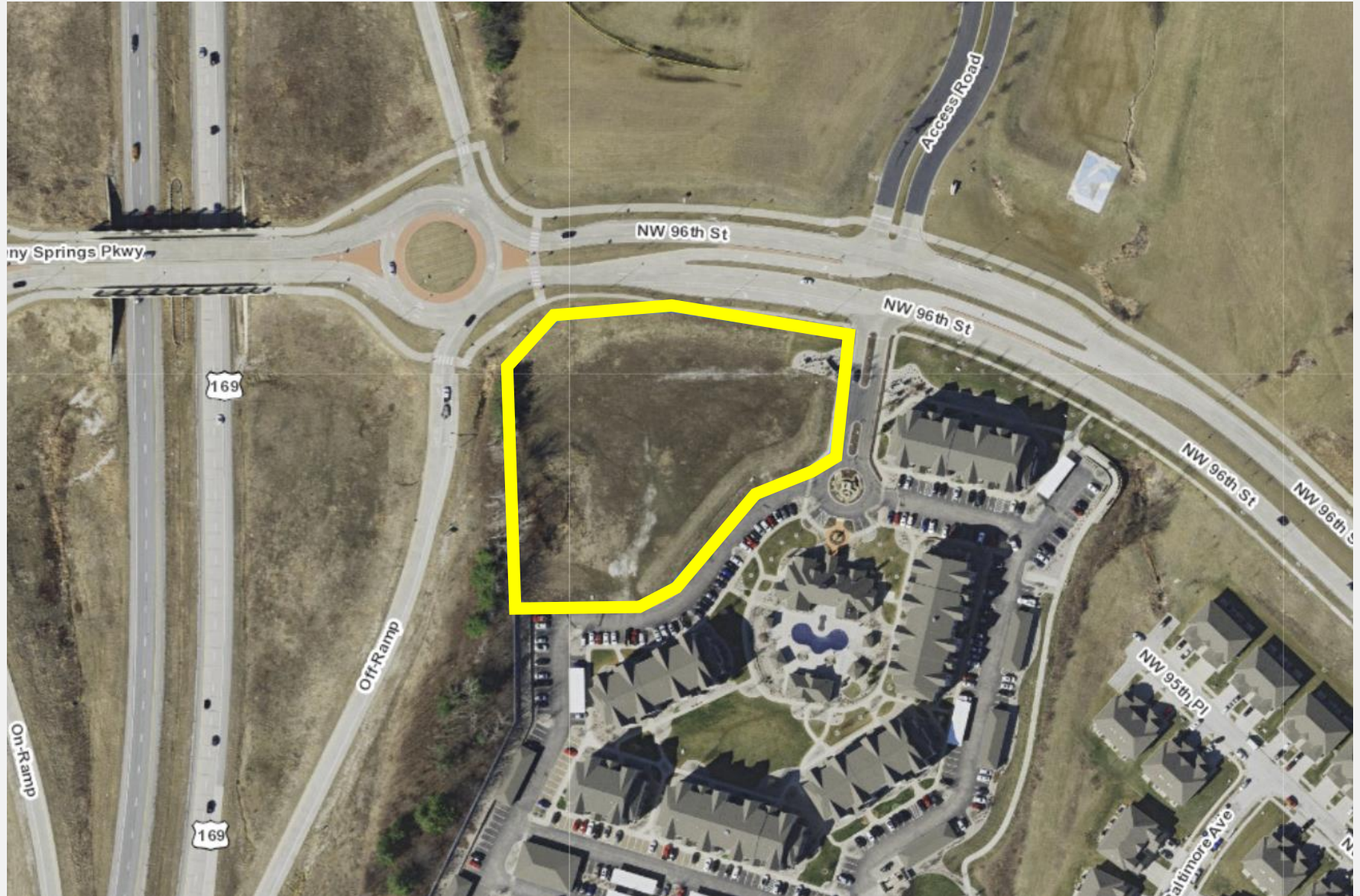
City Plan Commission



Location



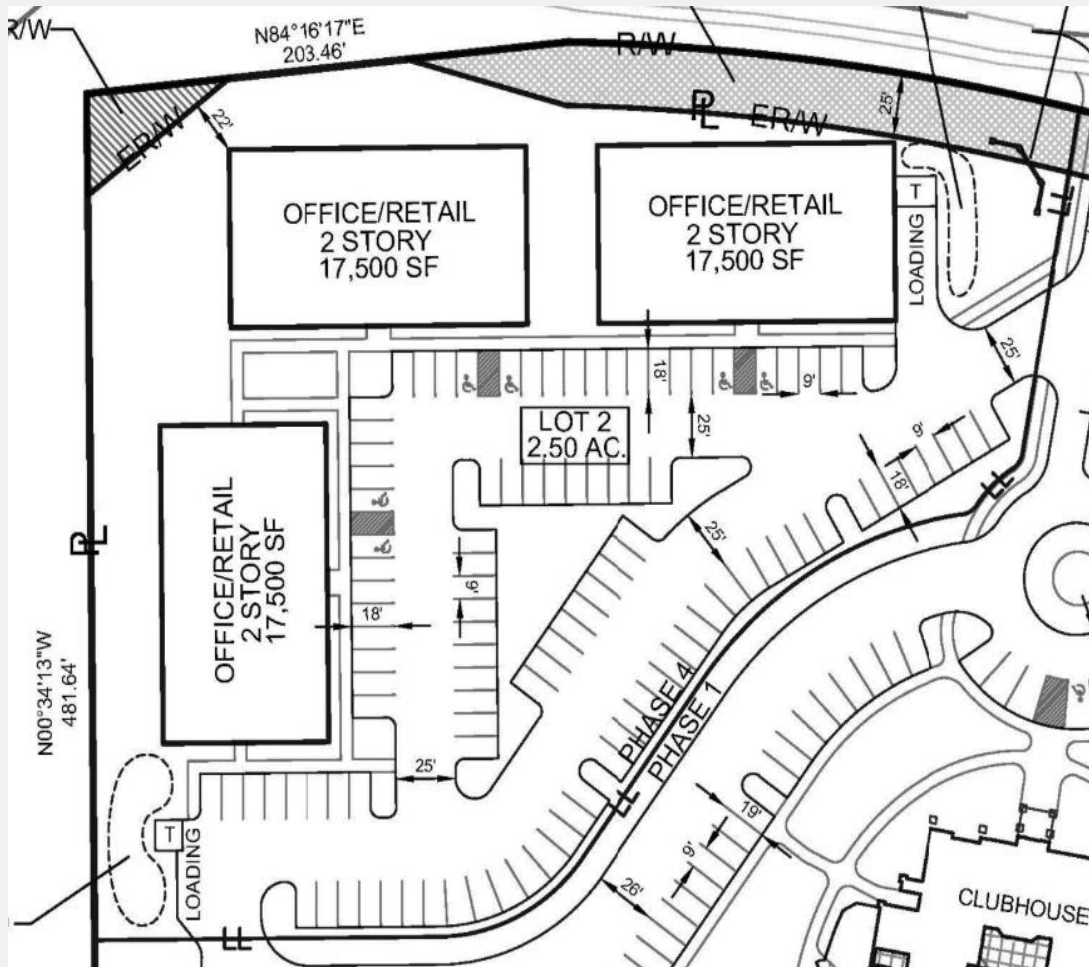
Location



Looking South from Northeast 96th Street



Previously Approved Plans



- **Approved March 7, 2013**
- **52,500 SF of Office/Retail Space**
- **3 Buildings**

Previously Approved Plans



- **Approved December 20, 2018**
- **51 Residential Units**
- **20 Buildings**

Site Plan

- 56 Residential Townhome Units
- 15 Buildings
- One Lot
- Not For Sale- Single Owner



Landscape Plan

- Additional trees placed along Northeast 96th St.
- Interior open spaces provided with trees and shrubs



Elevations- 96th Street



STREET SIDE

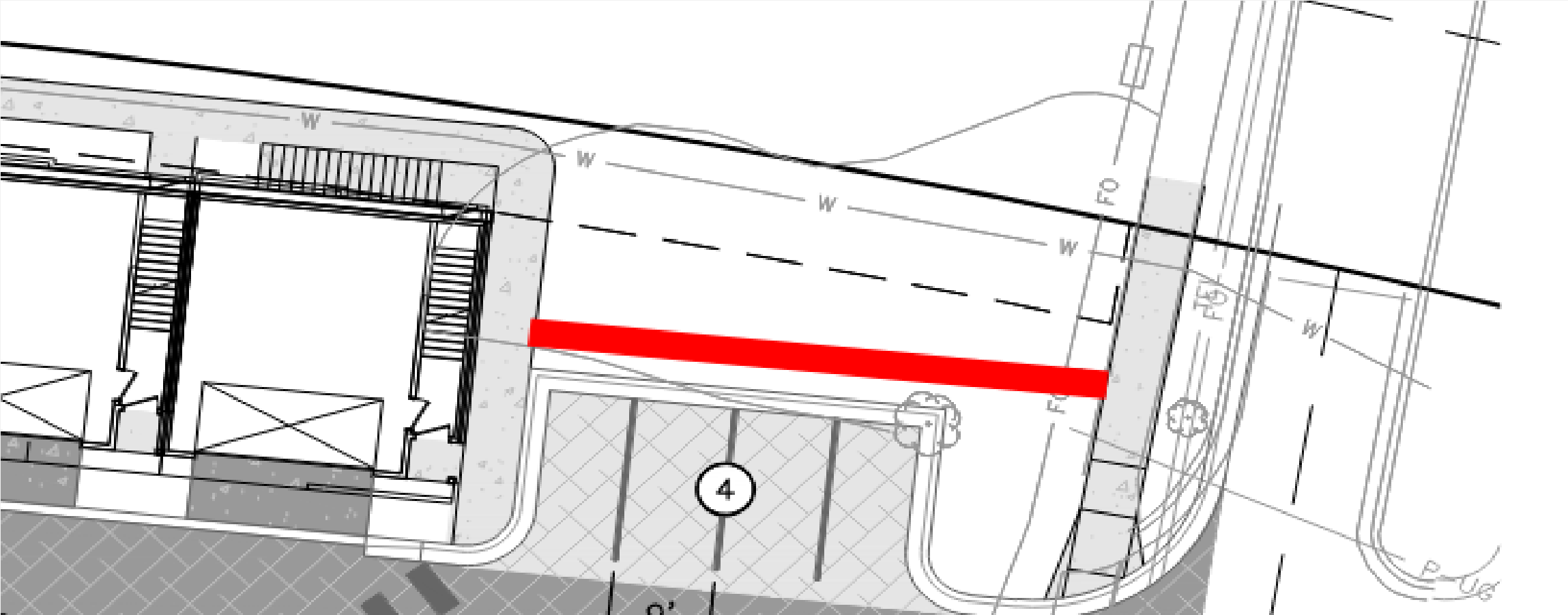
LEFT SIDE



BACK (TYP)

RIGHT SIDE

Pedestrian Connection Condition



Staff Recommendation

CD-CPC-2023-00146

Approval with Conditions

Major Amendment to MPD Plan