



ORDINANCE NO. 250509

FY26 Smart Sewer Program Management Services

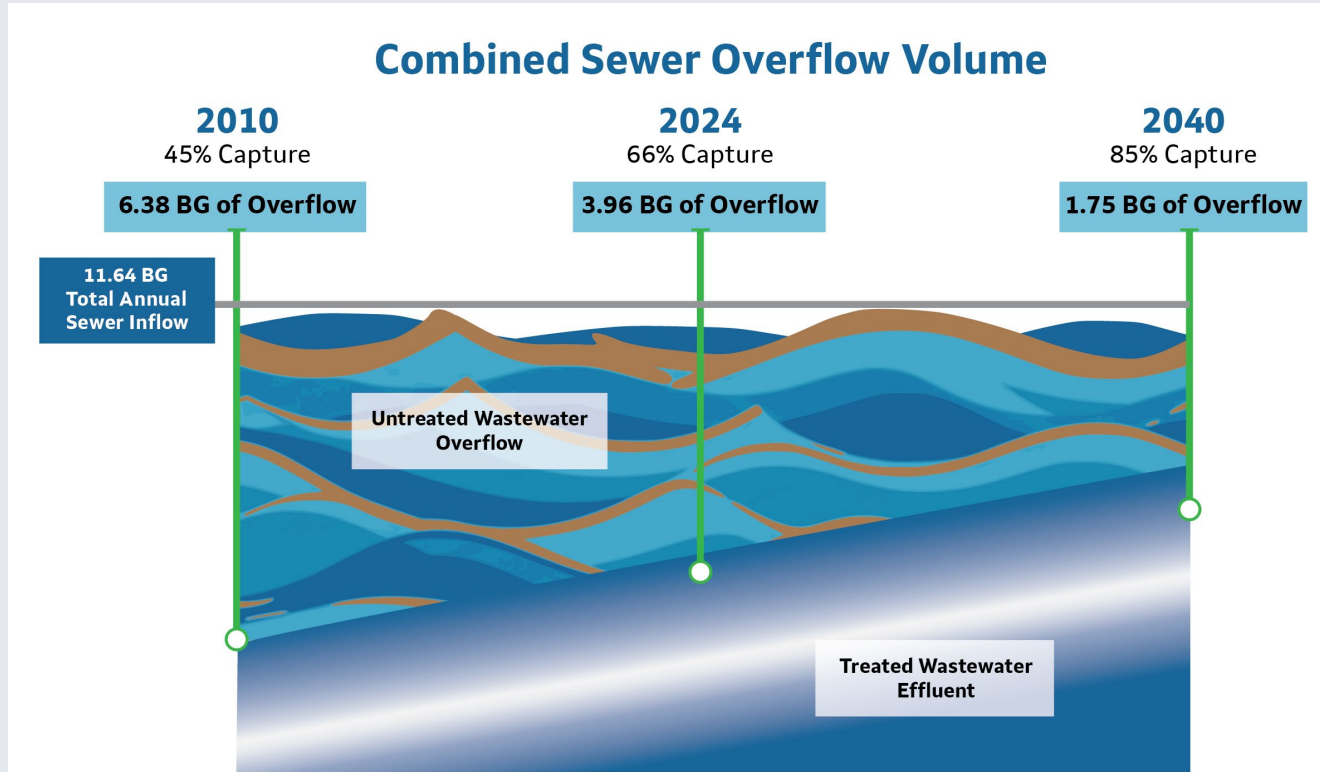
Authorizing a \$11,100,000.00 design professional services contract with Burns & McDonnell Engineering Company, Inc., for FY26 Smart Sewer Program Management Services; and authorizing one successive renewal option with further City Council approval; and recognizing this ordinance as having an accelerated effective date.

July 15, 2025

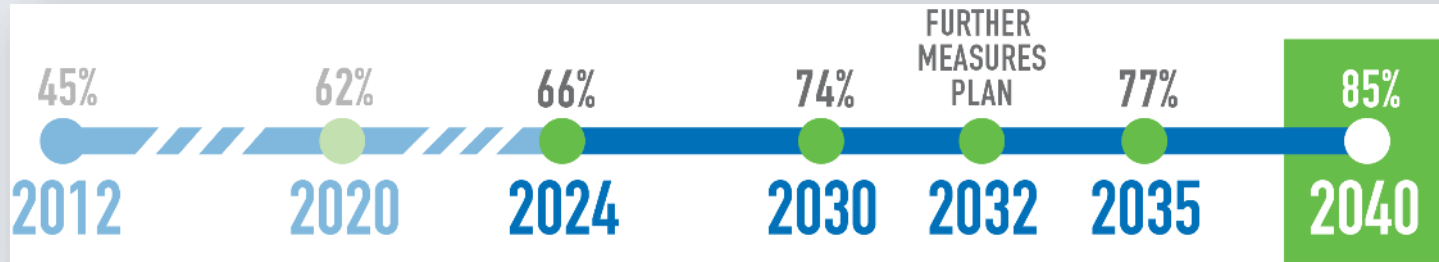
Transportation, Infrastructure & Operations
Committee



Consent Decree Combined Sewer Overflows



Consent Decree Milestones & Combined Sewer System Capture Criteria



By Dec 31, 2024, the City had to achieve full operation of all Phase 1 control measures and meet the Phase 1 interim percent capture of wet weather flows of 66% CSO capture.

Milestone submittal due to EPA Dec 31, 2025

Work Completed To-Date

2010-
2025

91
Total
Completed
Projects

\$853M Total
Value of
Completed
Projects

ORDINANCE NO. 250509

FY26

27

Active Projects

\$371M

Active Contracts

13

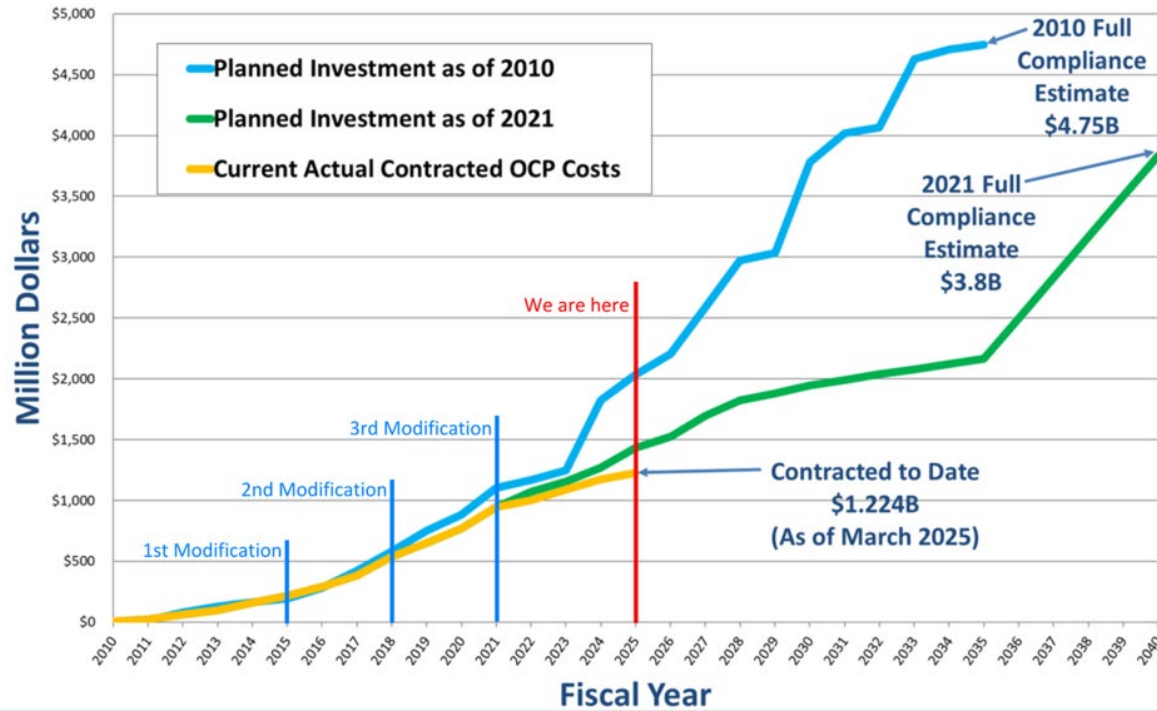
FY26 Projects

\$103M

FY26 Contracts

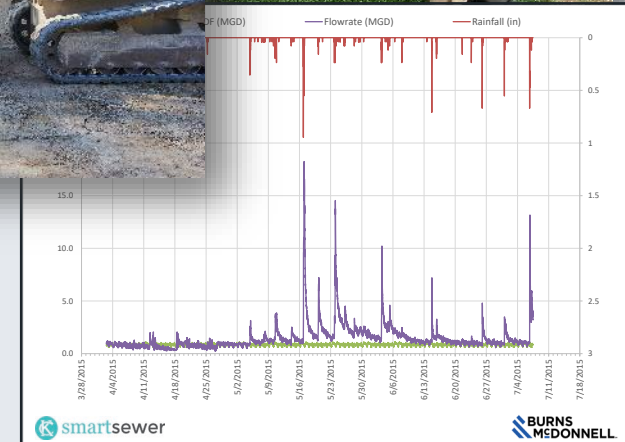
ORDINANCE NO. 250509

Cumulative Cash Flow Curve For Long-Term OCP (2010-2040)



ORDINANCE NO. 250509

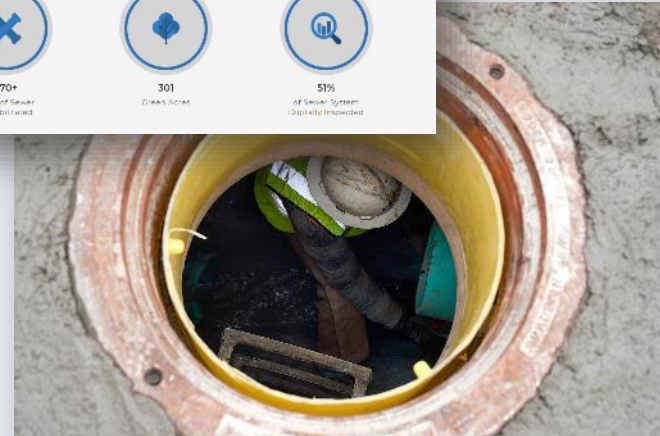
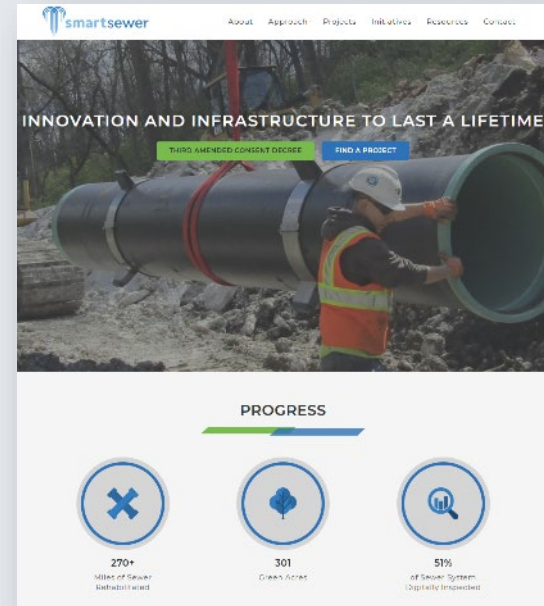
- Program management and administration, project controls
- Integration of Smart Sewer green infrastructure projects with other City projects
- Collection system flow and hydraulic modeling



ORDINANCE NO. 250509

- Annual Sewer Rehabilitation program based on Sewer system asset condition assessments
- Develop and implement projects required by Consent Decree, public outreach
- Design and construction administration support services and project management services

www.kcsmartsewer.us



ORDINANCE NO. 250509

Green Infrastructure

- Support implementation of the City's Green Infrastructure Maintenance Program
- 4 Local DBE Contractors
- KC Water training to support workforce development
- Cost-effective stormwater management in City's combined sewer system



ORDINANCE NO. 250509

M/WBE CREO KC Goals and Participation

CREO KC established goals of 15% MBE and 10% WBE on this Design Professional Services project on April 5, 2021.

The Contractor Utilization Plan was approved on July 8, 2025 with 16% MBE and 9% WBE participation.

MBE Firms

3T Design & Development, LLC
Dubois Consultants, Inc.
HG Consult, Inc.
NEER Technologies, Inc.
Parson & Associates, LLC
SE3 Group, LLC
Taliaferro & Browne, Inc.

WBE Firms

3T Design & Development, LLC
Lynchpin Ideas, LLC
Macy Consulting Services, Inc.
TREKK Design Group, LLC
Environmental Advisors & Engineers, Inc.
Vireo

THANK YOU