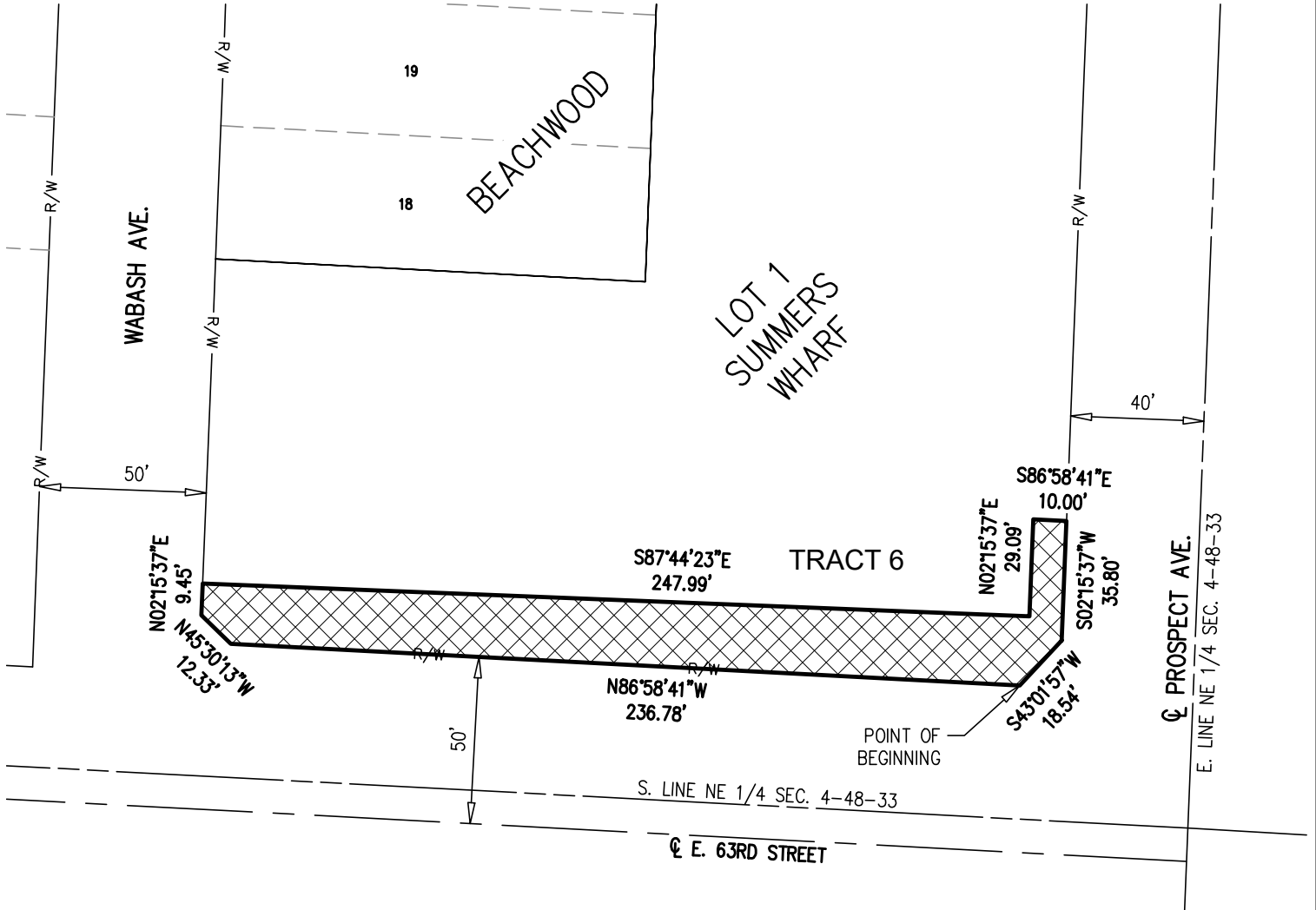
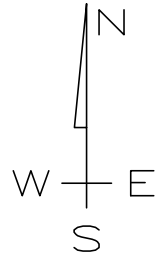
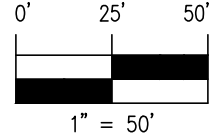
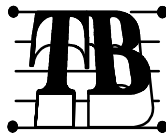


# EXHIBIT B



DECEMBER 02, 2021

PART OF LOT 1, SUMMER'S WARF,  
 A SUBDIVISION IN  
 KANSAS CITY, JACKSON COUNTY, MISSOURI  
 RIGHT-OF-WAY



**TALIAFERRO & BROWNE, INC.**  
 CONSULTING ENGINEERS-SURVEYORS  
 1020 EAST 8TH ST., KANSAS CITY, MO, 64106  
 PH: (816) 283-3456 FAX: (816) 283-0841

DRAWN: REG  
 CHECKED: MTI-DLJ

DATE: 12/02/2021

F:\04\04-4071 - SOUTHPONTE RIGHT-OF-WAY  
 04-4071V-RW01.DWG, ROW - Exhibit A and B (6), EXHIBIT B

6232 PROSPECT AVE.