

# EXHIBIT A

## DESCRIPTION RIGHT-OF-WAY VACATION:

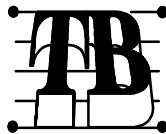
ALL OF THE PUBLIC ROAD DEDICATED TO PUBLIC USE BY THE RECORDED PLAT OF PLATTE GARDENS, A SUBDIVISION IN KANSAS CITY, PLATTE COUNTY, MISSOURI.



REVISED: 08/25/2020

AUGUST 25, 2020

PLATTE GARDENS  
KANSAS CITY, PLATTE COUNTY, MISSOURI  
RIGHT-OF-WAY VACATION



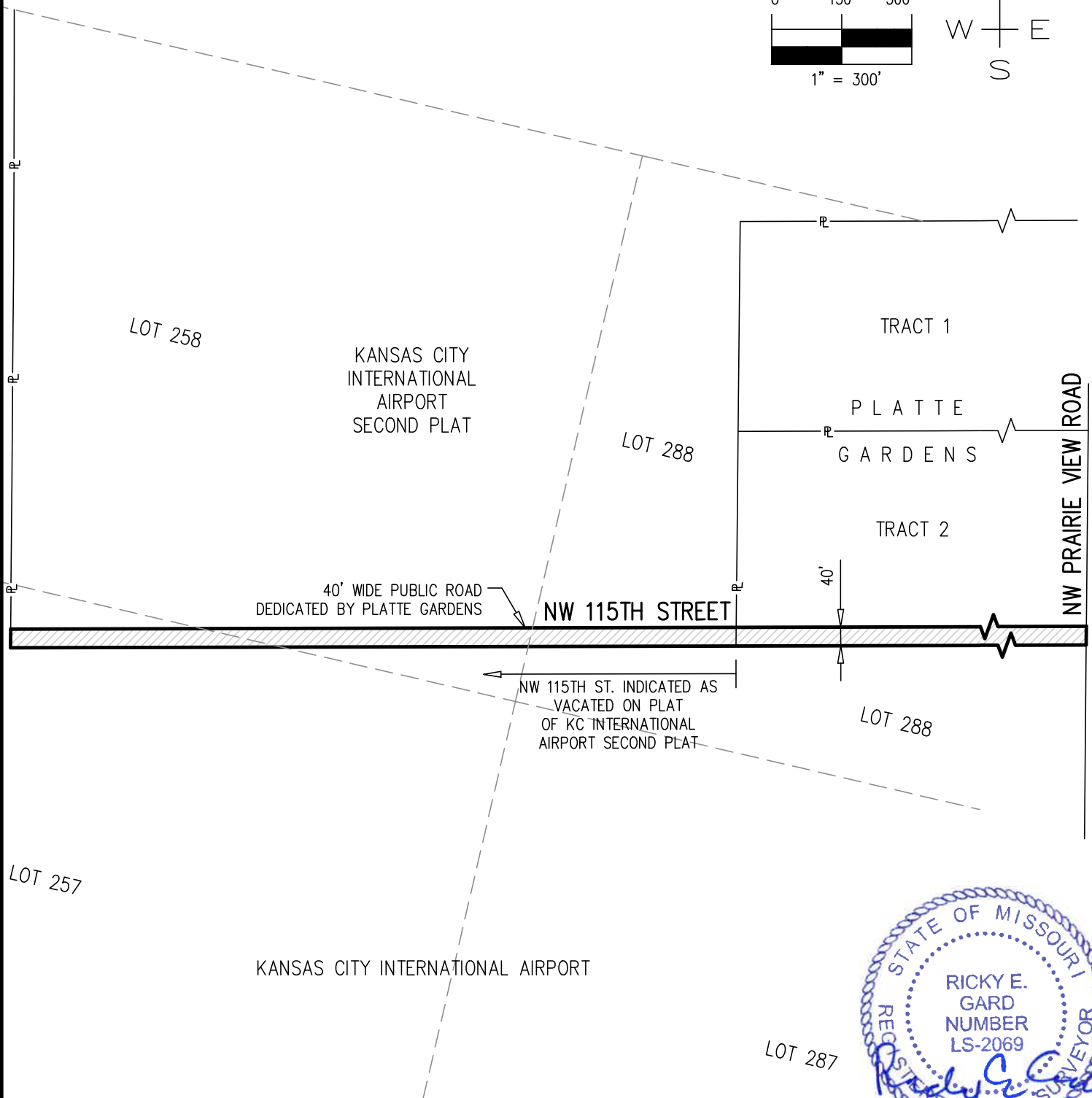
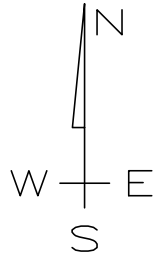
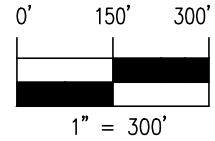
**TALIAFERRO & BROWNE, INC.**  
**CONSULTING ENGINEERS-SURVEYORS**  
1020 EAST 8TH ST., KANSAS CITY, MO, 64106  
PH: (816) 283-3456 FAX: (816) 283-0841

DRAWN: VAH  
CHECKED: MTI

DATE: 07/14/2020

C:\CIVIL 3D PROJECTS\02-4640-KCAD IDIQ - PARK AIR EXPRESS-WELLNER\DWG (WORKING)  
02-4640V-TS01.DWG, RIGHT-OF-WAY VACATION, EXHIBIT A 11500 NW PRAIRIE VIEW ROAD

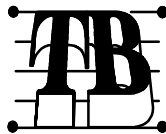
# EXHIBIT B



REVISED: 08/25/2020

AUGUST 25, 2020

PLATTE GARDENS  
KANSAS CITY, PLATTE COUNTY, MISSOURI  
RIGHT-OF-WAY VACATION



**TALIAFERRO & BROWNE, INC.**  
**CONSULTING ENGINEERS-SURVEYORS**  
1020 EAST 8TH ST., KANSAS CITY, MO, 64106  
PH: (816) 283-3456 FAX: (816) 283-0841

DRAWN: VAH  
CHECKED: MTI

DATE: 07/14/2020

C:\CIVIL 3D PROJECTS\02-4640-KCAD IDIQ - PARK AIR EXPRESS-WELLNER\DWG (WORKING)  
02-4640V-TS01.DWG, RIGHT-OF-WAY VACATION, EXHIBIT B 11500 NW PRAIRIE VIEW ROAD